

COUNTY OF SAN DIEGO REGISTRAR OF VOTERS



ELECTION ADMINISTRATION PLAN



Table of Content

Executive Summary	8
Vote-by-Mail Ballots	10
Background	10
Ballot Printing and Mailing Preparation	10
Processing Returned Mail Ballots	11
Counting Returned Mail Ballots	11
Tracking Mail Ballots	11
Vote Center and Ballot Drop Box Locations	12
Vote Center Formula and Considerations	12
Vote Center Minimum Requirements	13
Vote Center Site Selection	13
Vote Center Survey Assessment	13
Vote Center Facility Recruitment Process	13
Facility Research	14
List of Potential Vote Centers with Days and Hours of Operation	14
Map of Suggested Areas for Vote Centers	15
Vote Center Layout	16
Number of Vote Center Employees	17
Training of Vote Center Employees	17
Ballot Drop Box Location Formula and Considerations	18
Ballot Drop Box Minimum Requirements	18
Ballot Drop Box Survey Assessment	19
Ballot Drop Box Location Recruitment Process	19
List of Potential Ballot Drop Boxes with Days and Hours of Operation ...	20

Map of Suggested Areas for Ballot Drop Box Locations	21
Vote Centers and Ballot Drop Box Siting Tool and Methodology	22
Methodology	22
Site Selection Suggestion Form on Website	22
Services for Voters with Disabilities	23
Updated Accessibility Survey	23
Information for Services for Voters with Disabilities included in Voter Information Pamphlet and VBM Instructions	23
Accessible Information Posted to Website	24
How a Voter with Disabilities may request a Mail Ballot, RAVBM, or Replacement Ballot	24
Remote Accessible Vote-by-Mail (RAVBM)	25
Type and Number of Accessible Ballot Marking Devices	25
Type and Number of Reasonable Modifications at Vote Centers	25
Mobile Voting	26
Toll-Free Voter Phone Line	26
Video Conferencing	26
Language Assistance	27
Translated Reference Ballots and Language Assistance	27
Language Assistance Services included in Voter Information Pamphlets or Mail Ballot Instruction and Website	27
Bilingual Vote Center Staffing and Supported Languages	28
Toll-Free Voter Phone Line and Voter Call Center	28
Voting Technology	29
Voting System	29
Ballot Marking Device (BMD)	30

Voting Security	31
Security and Contingency Plans to Ensure Prevention or Disruption	31
State, Federal, and Local Partnerships	31
Internal Controls	31
Procedures, Methods, and Standards	32
Security and Contingency Plans to Ensure Continuation of Election in Event of Disruption	32
Vote Center Response During the Voting Period	32
Continuity of Operations Plan	33
Methods and Standards	33
Essential Functions	33
Communications	33
Alternate Facilities	34
Fiscal Impact	35
Estimates of Short-Term and Long-Term Savings	35
Overview of Voter Education and Outreach Plan	36
Background	36
Summary of Goals	37
Community Partners	38
Voter Accessibility Advisory Committee and Language Accessibility Advisory Committee	38
Voter Education Workshops for Language Communities	39
Methods to Identify Language Communities	39
Toll-Free Voter Phone Line and Language Assistance	40
Voter Educations Workshops for Disability Community	40
Remote Accessible Vote-by-Mail Outreach	40

High Schools	41
Colleges and Universities	41
Detention Facilities, Probation, and Parole	41
Voter Engagement and Community Events	42
Community Events	42
General Media Plan	43
Media Partners	43
Language Media Partners	43
Direct Voter Contacts	44
Postage-Paid Postcard for Requesting Materials in an Alternate Language or an Accessible Format	44
Public Service Announcement	44
Social Media	45
Outdoor Posters, Transit Shelters and Billboards	45
Website	46
Projected Budget for Voter Outreach	47
Appendices	48
Public Meetings	48
Public Meeting Schedule	49
Community Events	50
Community Partners	52
Language Access Community Partners	52
Sample Language Assistance Card	54
Disability Community Partners	55
Political, Advocacy, and/or Professional Organizations	56

Media Partners	57
Language Media Partners	59
Sample of Outdoor Voter Educational Poster Locations	60
Public Input Overview	62
Voter Accessibility Advisory Committee (VAAC)	62
VAAC Meeting Agenda	63
Language Accessibility Advisory Committee (LAAC)	64
LAAC Meeting Agenda	65
Vote Center Layout (Sample)	66
List of Vote Centers and Ballot Drop Box Locations	67
Voter's Choice Act Criteria Maps	81
Public Transit Routes	81
Areas with Low Vote-by-Mail Usage	82
Population Density	83
Limited English Proficiency	84
Voters with Disabilities	85
Low Rates of Vehicle Ownership	86
Areas with Low-Income Communities	87
Eligible Residents who are Not Yet Registered to Vote	88
Geographically Isolated Populations	89
Potential Areas for Vote Center or Ballot Drop Box Locations	90
County News Center Story	91
Publications	92
Public Notice for Consultation Meetings	92
Public Notice for Election Administration Plan Comment Period	94

Public Notice for Public Hearing	95
Public Notice for Second Public Hearing	96
Direct Mailer (Sample)	97
COVID-19 Protocols	99
Prohibited Activities	100
Sample Flyer	100
Special Election Provisions	102

Executive Summary

The California Voter's Choice Act (VCA), or Senate Bill (SB) 450 (Allen, D-26) was signed into law on September 29, 2016, adding Section 4005 to the California Elections Code, allowing authorized counties, upon approval of their Board of Supervisors, to conduct any election by mail, with certain requirements. Under VCA, all voters are mailed a ballot commencing 29 days before the election, and each county establishes, with public input, numerous ballot drop box locations and vote centers throughout the county where any county voter may cast their ballot. This legislation is one of many election reforms designed to change how elections are conducted in order to increase voter participation and voter engagement by expanding voting options.

The County of San Diego Board of Supervisors approved the county's transition to a vote center model under the Voters Choice Act on October 19, 2021. The San Diego County Registrar of Voters immediately created internal working groups to develop processes for operating and conducting elections under the vote center model.

A great deal of planning along with the purchase of required technology and equipment had already been accomplished as a result of administering both the November 3, 2020, Presidential General Election and the September 14, 2021, California Gubernatorial Recall Election under a "VCA-like" model due to the global pandemic.

In addition to the work already accomplished by the Registrar's office, we have incorporated feedback provided by voters and community advisory committees such as the Language Accessibility Advisory Committee (LAAC), and Voter Accessibility Advisory Committee (VAAC). We are also thankful for the support and guidance provided by the Secretary of State's office and the counties who have transitioned before us.

You can learn more about joining the county's LAAC and VAAC on the Registrar's website at [Language Accessibility Advisory Committee \(sdvote.com\)](https://sdvote.com/language-accessibility-advisory-committee) and [Voter Accessibility Advisory Committee \(sdvote.com\)](https://sdvote.com/voter-accessibility-advisory-committee).

The Election Administration Plan (EAP) provides the foundation and guiding outline for the future of voting and elections in San Diego County. We have updated our website to inform the public about the upcoming changes and incorporated tools for community feedback and site suggestions. The website can be found at [Voter's Choice Act \(sdvote.com\)](https://sdvote.com/voters-choice-act).

Following the public comment period and finalization of the EAP, the Registrar's office will implement a comprehensive Voter Education and Outreach Plan ranging from expanding our social media presence, partnerships with high schools and institutions of higher education, collaborations with government agencies and community organizations, and conducting a variety of voter education workshops. The plan is a framework for the Registrar's office to meet its goal of informing San Diego County's over 1.9 million registered voters of the upcoming changes and transition to the vote center model.

The first countywide election under this new model will be the June 7, 2022, Gubernatorial Primary Election, and the first special election under this model will be the April 5, 2022, State Assembly District 80 Special Primary Election. We look forward to providing San Diego County voters with more convenient and secure voting options and an improved voter experience through the vote center model. All active registered voters will receive a ballot in the mail, and they may still choose to vote in-person at any vote center in San Diego County.

At the time of preparing the EAP, San Diego County would have a minimum of 195 vote centers, all would be open for four days, including election day, with 39 of the 195 vote centers being open an additional seven days for a total of 11 days and a minimum of 130 mail ballot drop box locations are expected based on current voter registration totals and California Elections Code requirements. Voters may return their vote-by-mail ballot by mail (no postage required), at a ballot drop box location, or at any vote center.

As we transition to the vote center model, my staff and I remain committed to our mission of providing election services to the citizens of San Diego County to ensure equal access to the election process, protect the integrity of votes, and maintain a transparent, accurate and fair process while safeguarding voters against the spread of misinformation by keeping them informed of their voting options and the conduct of elections.

Cynthia Paes
Registrar of Voters
San Diego County

Vote-By-Mail Ballots

§4005(a)(8)(A)

The implementation of the Voter's Choice Act (VCA) in San Diego County requires that every one of its over 1.9 million active registered voters receive a ballot in the mail. San Diego County has proven that it is well positioned to handle the volume of the printing, mailing, and processing of mail ballots that will result from this obligation. This requirement supports current voter behavior and projected trends, which the San Diego County Registrar of Voter's office has already taken into consideration.

Further, for all future elections, all voters will now receive a ballot in the mail regardless of preference or voting model, pursuant to Assembly Bill 37 (Berman).

Background

In the March 2020 presidential primary election, the Registrar's office issued nearly 1.4 million mail ballots to voters who specifically requested to receive their ballots by mail, approximately 75% of the county's total registered voters. The number of voters who request to receive ballots by mail has been steadily increasing for the better part of two decades. With such a large percentage who prefer voting by mail over the years, the Registrar's office has matured its processes, increased capacity and is more than prepared to manage the processing of mail ballots accurately and securely.

This preparation proved successful while administering the November 2020 presidential general election. As a result of the COVID-19 global pandemic, the Governor's two Executive Orders (N-64-20 and N-67-20), and related legislation (Assembly Bill 860 - Berman and Senate Bill 423 - Umberg) permitting the Registrar of Voters to conduct the presidential general election under a "VCA-like" voting model, the Registrar's office mailed over 1.96 million ballots to all active registered voters in the county and made available 235 in-person voting sites open for four days, and 125 mail ballot drop-off locations open for nearly a month.

The Registrar again operated under a "VCA-like" model for the September 14, 2021, California Gubernatorial Recall Election. Over 1.96 million ballots were mailed to the county's active registered voters, 131 mail ballot drop-off locations were open for nearly a month and 221 in-person voting sites were open for four days of in-person voting.

Ballot Printing & Mailing Preparation

The Registrar's office has a state certified vendor who can handle the vote by mail ballot printing and mailing capacity. The office has also maintained a long-term and strong partnership with its local United States Postal Services office to ensure timely delivery and return of mail ballots.

The vote by mail packet is sent to voters in a white envelope labeled with the Official Election Mail logo and contains the following:

- A yellow return envelope
- The official ballot, which may be on multiple ballot cards depending on how many contests are in the election
- Instructions on how to complete and return the ballot
- The closest ballot drop box location along with direction to the complete lists and hours of operation at sdvote.com
- An “I Voted” sticker

Processing Returned Mail Ballots

The Registrar’s office has invested over the years to manage backend processing of mail ballots. The office currently operates its own high-speed mail sorting machines that are used to process returned ballots. These sorting machines take an image of every returned envelope, and tracks that the ballot has been returned. The images of the signature on the returned envelopes are used by staff to perform a signature comparison and determine if the signature compares with the voter’s signature on file. The speed of the mail sorting equipment, its integration with the signature verification process, and the use of automated extraction machines has allowed the Registrar’s office to seamlessly handle the volume of returned mail ballots.

Counting Returned Mail Ballots

The Registrar’s office has eight high-capacity scanners that can scan over 10,000 ballots per hour per scanner. These were purchased in 2019 and have more than doubled scanning capacity. The office has access to an additional 40 Canon scanners that can scan over 4,000 ballots per hour per scanner and can be used when additional capacity is required during the election cycle.

Tracking Mail Ballots

The Registrar’s office uses the Secretary of State’s Where’s My Ballot system operated through BallotTrax. This system provides additional transparency for voters on the status of their mail-in ballot. Voters can receive notifications as their security return envelope with ballot enclosed moves through the mail stream. Mail ballots are tracked using an Intelligent Mail Barcode (IMB) which the United States Postal Service uses to track when ballots are mailed and returned to the Registrar’s office.

Vote Center and Ballot Drop Box Locations

§4005(a)(10)(B)

The VCA establishes detailed criteria and formulas for the placement and locations of vote centers and ballot drop box locations. Vote centers and ballot drop box locations will be decided based on specific considerations and requirements described below:

- Proximity to public transportation
- Proximity to communities with historically low vote-by-mail usage
- Proximity to population centers
- Proximity to language minority communities
- Proximity to voters with disabilities
- Proximity to communities with low rates of household vehicle ownership
- Proximity to low-income communities
- Proximity to communities of eligible voters who are not registered to vote
- Proximity to geographically isolated populations, including Native American reservations
- Proximity to college campus or university
- Access to accessible and free parking
- The distance and time a voter must travel by car or public transportation
- Traffic patterns near vote centers and ballot drop-off locations

Vote Center Formula and Considerations

§4005(a)(10)(I)(vi)(I)

The VCA has established a formula for determining the number of vote centers based on the number of registered voters. Counties are instructed to provide one 11-day vote center for every 50,000 registered voters and one 4-day vote center for every 10,000 registered voters. Based on the algorithm outlined in the VCA, the required minimum is 39 vote centers open for 11 days, including Election Day, and 195 vote centers that will be open for four days, including Election Day, in San Diego County.

The Registrar's office plans to provide more vote centers than the required minimum. San Diego County will operate approximately 39 vote centers open for 11 days, including Election Day. All of the locations will be in full operation during the last four days of voting throughout San Diego County. Vote centers will have two "opening days", with greater numbers of vote centers in operation during the final four days with expanded hours on Election Day.

Increasing the number of locations will enable the placement of additional vote centers in isolated communities like Borrego Springs, Boulevard, Campo, Descanso, Rincon, and Warner Springs.

Vote Center Minimum Requirements

Vote centers will be decided based on requirements set forth in statute, the accessibility to voters with disabilities and language needs, location availability, and public feedback. The Registrar's office will use voter and population data to assist with selecting the best areas for vote centers.

The Registrar's office has been identifying and assessing hundreds of potential facilities to ensure that locations are distributed throughout San Diego County in a manner that provides greater access and convenience for all voters.

Vote Center Site Selection

VCA requires counties to consider at a minimum fourteen criteria when establishing vote centers. The Registrar's office uses the Center for Inclusive Democracy (CID) siting tool and the most current available geospatial data from SanGIS to consider all required criteria. The Registrar's office provides access to the interactive CID siting tool which allows the user to search for and evaluate any proposed location against required criteria (see Center for Inclusive Democracy Siting Tool description on page 22).

While the CID Siting Tool provides a quick and effective way to assess proposed locations against required criteria, it does not automatically define where vote center locations will be identified and confirmed.

Vote Center Survey Assessment

In addition to considering required criteria, a vote center survey assessment considers many of the other site selection elements that, while not required by law, impact the vote center siting process. Some examples of these site selection elements include path of travel, size of the voting room, the presence of adequate lighting (both inside and outside), the geographic area of the proposed site, internet connectivity, and electrical capacity.

Vote Center Facility Recruitment Process

As a result of the COVID-19 global pandemic and emergency legislation the Registrar's office conducted both the November 2020 presidential general and the September 2021 gubernatorial recall elections under a "VCA-like" voting model with 221 to 235 voting locations open for four days of voting across the county. These voting locations were

again reviewed and assessed to determine if they would meet minimum requirements for a vote center.

Locations unable to accommodate vote center operations, such as private residences and locations under 1,000 square feet, were contacted to inform them of the transition to a new voting model and thanked them for their past service. The remaining facilities were moved forward to the next level of review in the recruitment process.

Facility Research

Based on the previous facility recruitment process, a list of over 500 voting locations has been reviewed and contacted to serve as possible vote centers if initial criteria were met.

Non-public facilities were contacted for further discussion on availability and potential costs. Public facilities were contacted to schedule vote center survey assessments.

Consistent with previously used polling place research, additional public properties and facilities within the county are being evaluated and added to a master list for further research. Suitable facilities, that have not served as polling places, have been contacted for vote center site assessments. Additionally, based off population data, cities have been evaluated for a targeted number of vote centers.

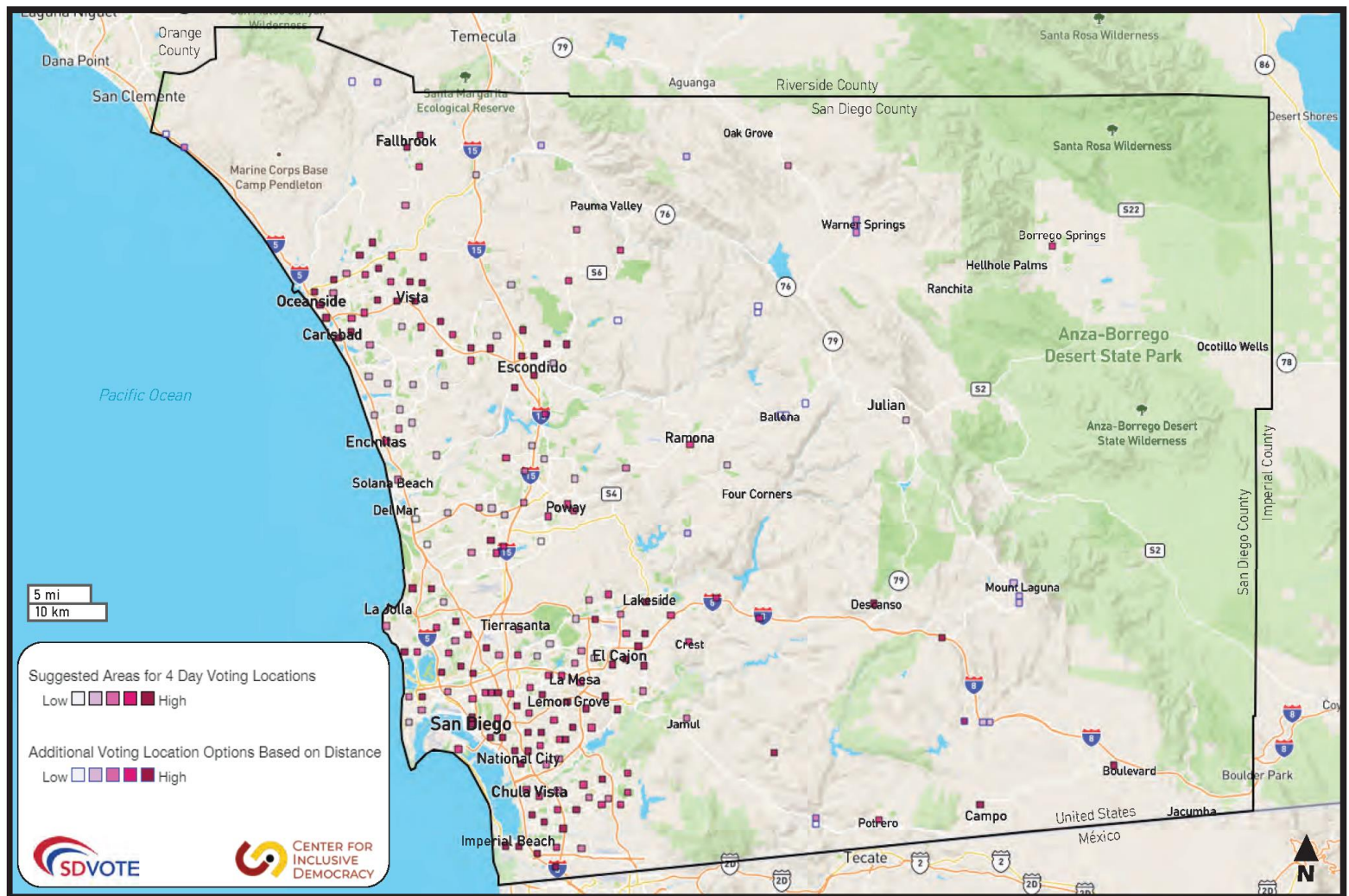
List of Potential Vote Centers with Days and Hours of Operation

§4005(a)(10)(I)(vi)(III), §4005(a)(10)(I)(vi)(VI)

The Registrar's office is currently in the process of identifying potential vote centers and conducting site assessments and accessibility surveys. Vote center locations will be selected in conjunction with public feedback and the requirements as necessitated by law. The final list of selected vote centers will be included in the Voter Information Pamphlet and will be available on the Registrar's website, sdvote.com.

Starting ten days before Election Day, approximately 39 vote centers will be open during regular business hours, from 8:00 a.m. to 5:00 p.m., and on Election Day, from 7:00 a.m. to 8:00 p.m. An additional 196 vote centers will open starting at three days before Election Day. See page 67 in Appendices for the 11-Day and 4-Day Locations Table at the time of publishing. The San Diego County Registrar of Voters will publish a list of vote centers on the Election Information page at sdvote.com.

Map of Suggested Areas for Vote Centers



Vote Center Layout

§4005(a)(10)(l)(vi)(XI)

A voter's experience at any of the county's vote centers will be similar to voting at one of the voting locations used during the September 2021 gubernatorial recall election. Vote centers offer voters enhanced services and benefits that are secure and convenient. All vote centers will be equipped with a minimum of four electronic rosters (electronic pollbooks, or e-pollbooks) allowing vote center staff to verify the status and eligibility of the voter quickly and easily, and a minimum of eight ballot marking devices. At vote centers, a voter will be able to:

- Vote in-person or drop off an already voted mail ballot (sealed inside its return envelope)
- Use a touchscreen ballot marking device to mark selections and print out an official ballot
 - All ballot marking devices are fully accessible allowing voters with disabilities to vote independently and privately
- Vote in-person using the ballot you received in the mail
- If you made a mistake or lost your mail ballot, you can instead vote in person at any vote center
- Get language assistance
- Register to vote and vote the same day
- Update voter registration information (address, political party)

The Registrar's office will implement vote center layout guidelines to ensure all ballot marking devices and voting booths are placed in a manner that allows a voter to mark their ballot independently and privately. Layouts will be sensitive to the accessibility needs of voters and will be expected to be adjusted to accommodate the varying shapes and room sizes of each location (see page 66 in Appendices for a sample layout).

Each vote center layout incorporates four stations:

- Greeter Station: Greet voters, manage any lines, accept mail ballot drop off or provide check-in forms, clipboard, pen, and direct voters to check-in station
- Check-in Station: Check-in voters, conditionally register voters and provide assistance
- Voting Station: Voters mark their selections privately and independently with a ballot marking device or in a voting booth (marking ballot mailed to them)
- Check-out Station: Cast ballot in official ballot box and receive "I Voted" sticker

Number of Vote Center Employees

§4005(a)(10)(I)(vi)(IX)

The estimated number of vote center employees is based on the number of 11-day and 4-day vote centers, the number of check-in stations and ballot marking devices in relation to the anticipated turnout of a vote center and a schedule that supports all-day shifts. Estimates of the number of required vote center employees are calculated based on an average of six staff needed at the 11-day centers, and twelve staff at the 4-day voting at all centers. The average considers that there may be differences in the number of required staff at any given vote center.

Vote Center Type	# Sites	Staffing Type	# Days	Full-day Shifts	Projected Staff
11-Day	39	6-person staff	7 Days	39 sites x 6 staff	234
		12-person staff	4 Days	39 sites x 6 added staff	234
4-Day	181	12-person staff	4 Days	181 sites x 12 staff	2,172
Total Projected Need (All numbers are estimates)	220				2,640

Training of Vote Center Employees

Training of vote center employees is guided by the California Secretary of State's Poll Worker Training Guide. The county's Poll Worker Training Manual and other training materials can be viewed on the Registrar's website at [Poll Workers Training \(sdvote.com\)](https://sdvote.com). This material is typically posted one month prior to Election Day.

Ballot Drop Box Location Formula and Considerations

§4005(a)(10)(I)(vi)(II)

The VCA has established a formula for determining the number of ballot drop box locations based on the number of registered voters. Counties are instructed to provide at least two locations within the jurisdiction where the election is held or at least one ballot drop box location for every 15,000 registered voters. San Diego County Registrar plans to provide approximately 130 ballot drop box locations throughout San Diego County.

Minimum criteria are being considered and evaluated while researching any potential ballot drop box location. Ballot drop box sites that will best provide voters with additional options to drop off their ballot securely and conveniently are being considered. Best efforts are being made to identify locations for stand-alone drop boxes, in areas with existing security camera coverage in different areas than vote center sites and post offices.

There will be a combination of stand-alone and staffed ballot drop box locations.

Ballot Drop Box Minimum Requirements

§4005(a)(10)(I)(vi)(VI)

In addition to the VCA minimum requirements, the California Secretary of State's office provides regulations such as accessibility and language requirements. Stand-alone ballot drop boxes have been designed to provide translated legal language included in the graphics of the ballot drop box. As well, the Registrar's office is evaluating the possibility of adding additional features to support voters with disabilities, such as content in Braille, and high contrast artwork, and will continue to work with disability community partners to research best practices for future consideration.

Ballot drop box locations, whether indoors or outdoors, will be decided based on the requirements set forth in the VCA, accessibility to voters with disabilities and language needs, location availability, and public feedback.

The Registrar's office will be identifying and assessing hundreds of potential locations to ensure that the ballot drop boxes are distributed throughout San Diego County in a manner that provides greater access and convenience for all voters.

As well, the Registrar will follow "California Code of Regulations (CCR) Title 2. Administration, Division 7, Chapter 3. Article 1. Vote by Mail Ballot Drop Boxes and Vote by Mail Drop Off Locations" guidelines which provide security measures in the design requirements of the ballot drop box, security monitoring and procedures of use during the available voting period. The design and language printed on the ballot drop boxes

will inform the public that the box is official and secure. Ballot drop boxes will have preventative security such as anti-vandalism coating and fire suppression features.

Ballot Drop Box Survey Assessment

VCA requires counties to consider at a minimum fourteen criteria when establishing ballot drop box locations. The Registrar's office uses the Center for Inclusive Democracy (CID) siting tool and the most current available geospatial data from SanGIS to consider all required criteria. The Registrar's office provides access to the interactive CID siting tool which allows the user to search for and evaluate any proposed location against required criteria (see description of Center for Inclusive Democracy Siting Tool on page 22).

While the CID Siting Tool provides a quick and effective way to assess proposed locations against required criteria, it does not automatically define the final ballot drop box locations.

Beyond the minimum requirements, additional criteria will be considered in choosing the ballot drop box locations. These criteria, while not required by law, impact the siting process, and improve the desirability of the location. Some examples of these site selection elements include, presence of an onsite security camera, availability of short term/temporary parking spaces for the ballot retrieval team, and the presence of adequate lighting at the proposed site.

Ballot Drop Box Location Recruitment Process

An informational packet is being developed which will include a letter from the Registrar of Voters and an informational ballot drop box flyer on specifications, expectations, and frequently asked questions. The packet will be used to outreach to potential sites and will provide detailed information about the ballot drop box process. The packet will include a ballot drop box agreement so that all parties have a clear understanding of roles and obligations.

Previous polling places and mail ballot drop off locations were reviewed to determine if the location could support a ballot drop box on site. Working concurrently with potential vote center site selections, potential ballot drop box locations have been identified that will provide additional options for voters to drop off voted ballots. In addition, research has been conducted on potential city sites, libraries, and other publicly available locations. Well-known retail shopping centers and privately-owned properties have also been identified as possible locations. All potential ballot drop box locations are being further reviewed. Like the vote center recruitment process, cities and areas that have the largest need for ballot drop boxes are being prioritized.

Every potential site will undergo a site assessment to determine suitability and accessibility. Once the site is fully reviewed, final determinations will be made on the potential location of any placement. This will require working with the site tenant, property management company and/or property owner for approval.

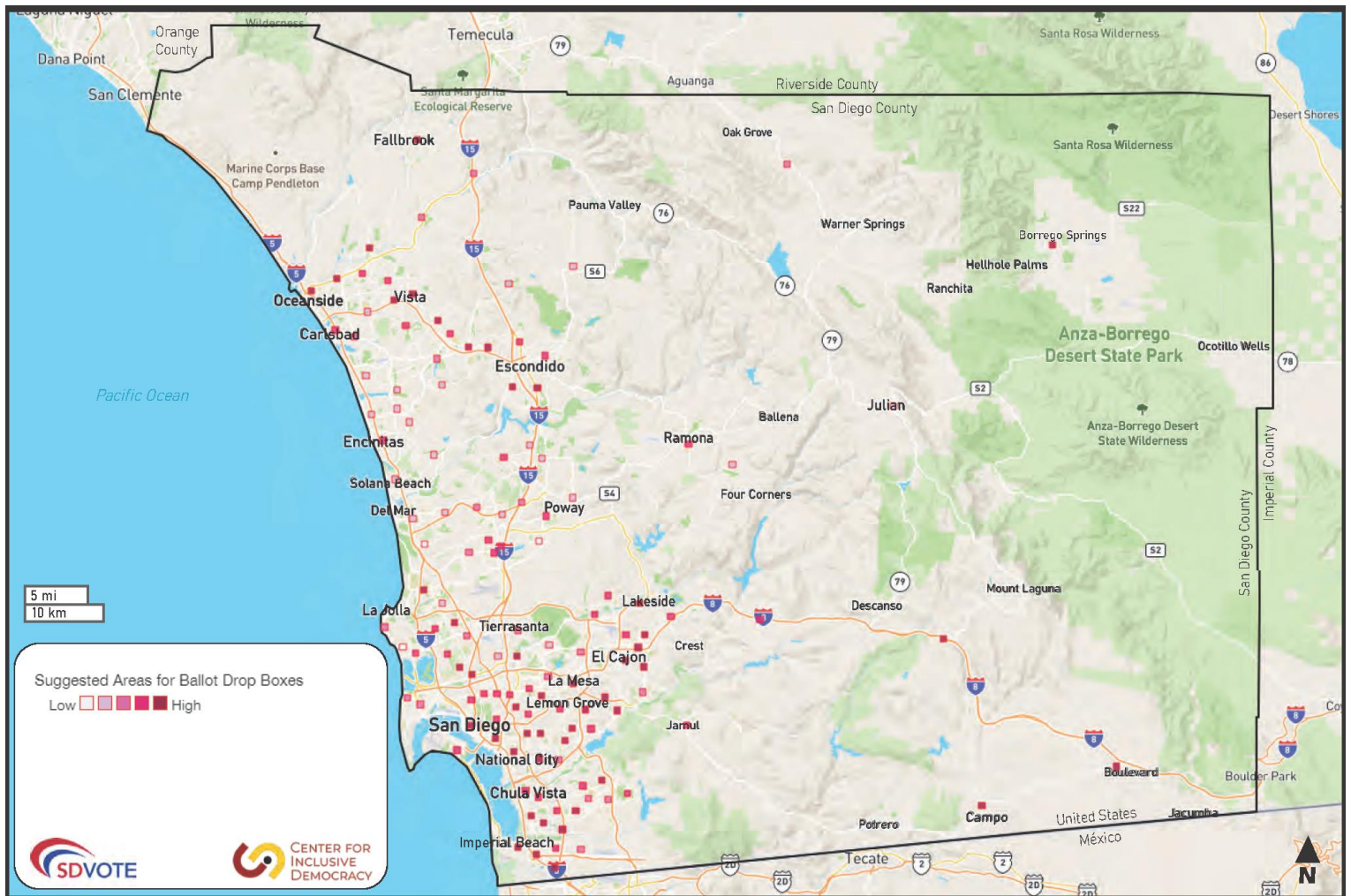
List of Potential Ballot Drop Boxes with Days and Hours of Operation §4005(a)(10)(I)(vi)(IV), §4005(a)(10)(I)(vi)(VII)

The Registrar's office is currently in the process of identifying potential ballot drop box locations and conducting site assessments and accessibility surveys. Ballot drop box locations will be selected in conjunction with public feedback and the requirements as necessitated by law. The final list of selected ballot drop box locations will be included in the Voter Information Pamphlet and will be available on the Registrar's website at sdvote.com.

All ballot drop box locations will be open during regular business hours with at least one accessible box that is available 24 hours a day, 7 days a week. All ballot drop box locations will close Election Day, at 8:00 p.m.

See page 77 in Appendices for Ballot Drop Box Locations Table at the time of writing and publishing. The Registrar of Voter's office will publish a list of ballot drop box locations on the Election Information page at sdvote.com.

Map of Suggested Areas for Ballot Drop Box Locations



Vote Centers and Ballot Drop Box Siting Tool and Methodology

To assist with selecting sites for vote centers and ballot drop box locations, the Registrar's office uses the [Center for Inclusive Democracy \(CID\) siting tool](#) and the County's Geographic Information System (GIS) technology to help identify optimal sites for potential vote centers and ballot drop box locations. This is accomplished by visualizing demographic and voter data, polling places, parcel information, census data, and precinct information at the community level.

Utilizing the siting tool's grid, made up of half mile cells covering the entire county, "suitable areas" were identified and compared against archived polling places, voting locations and new public properties and facilities. Survey assessments were performed to determine if the locations would meet minimum required criteria and other site selection elements for a vote center or ballot drop box location.

To further assist with the process, the CID data was integrated with potential vote center and ballot drop box locations based off archived polling places, voting locations, public infrastructure, and community sites. This allows exploring existing data, proposing new sites, and tracking progress of site selection process to make informed decisions.

Methodology

Using CID siting tool, site selection elements, and GIS technology, the San Diego Registrar of Voters will identify locations for all "suitable areas" in the County to host vote centers and ballot drop box locations.

Site Selection Suggestion Form on Website

Another way vote center and ballot drop box locations are selected for assessment is public feedback received through the Site Suggestion Form on sdvote.com. This allows the public to provide a facility name, address, and a reason for suggesting a location. The Registrar's office continues to follow up on feedback related to vote centers and ballot drop box locations.

Services for Voters with Disabilities

§4005(a)(10)(I)(vi)(X)

The San Diego County Registrar of Voters is committed to supporting voters with disabilities throughout the transition to the vote center model. The Registrar's office will expand and update services for voters with disabilities through a collaborative process of community and advisory committee input and by using an updated comprehensive accessibility survey.

The Registrar's office supports voters with disabilities by:

- Ensuring all vote centers meet accessibility requirements
- Using ballot marking devices with current accessibility supported technology
- Providing the ability to cast a ballot independently from home through the county's remote accessible vote by mail (RAVBM) system
- Providing audio and large print versions of voting materials

Updated Accessibility Survey

§4005(a)(4)(C)

To comply with accessibility requirements, the Secretary of State Accessibility Checklist was reviewed, and additional requirements were added to the Registrar of Voter's Polling Place Survey to create the San Diego County Registrar of Voters Vote Center Survey. The updated version focuses on a more in-depth examination of paths of travel from public transportation, seeking sites with a maximum number of accessible parking spaces, and additional questions to differentiate between types of curb ramps.

The past survey was also reviewed to ensure that all questions on the current survey follow the Secretary of State Accessibility Checklist and the requirements in the VCA. The format of the Vote Center Survey was also updated from previous paper versions and outdated electronic versions to an application-based program that can be used on a mobile electronic device.

Information for Services for Voters with Disabilities included in Voter Information Pamphlet and VBM Instructions

§4005(a)(8)(B)(i)(IV)

The Voter Information Pamphlet will include information on how voters with disabilities can request assistance, Disability Rights California's Voting Hotline phone number, and how to contact the Registrar of Voter's office for any general questions. Additionally, the pamphlet will specify that a voter unable to mark a ballot may bring up to two individuals

to assist with voting. The pamphlet will also include a postcard with prepaid postage for voters to request a remote accessible vote by mail ballot (RAVBM).

The mail ballot instructions will inform voters of the availability of requesting election materials in an accessible format.

Accessible Information Posted to Website

§4005(a)(10)(I)(i)(IV), §4005(a)(8)(B)(ii)

The Registrar of Voter's website provides information to all voters in an accessible format. Special attention has been given to the design of the website to facilitate compatibility with screen readers and easy navigation.

The website provides voters with information relating to the election process, registering to vote, VCA legislation, and the Election Administration Plan (EAP). The website also has a dedicated [Accessible Voting \(sdvote.com\)](https://sdvote.com) webpage that will provide information about services available to voters with disabilities, including:

- Vote center and ballot drop box accessibility
- Ballot marking device description and instructions
- Resources for voters with disabilities
- Requesting a remote accessible vote by mail ballot (RAVBM)

The website will include information on the types of services available to voters with disabilities, what services can be accessed at vote centers, and more. It will also include a list of vote centers and ballot drop boxes in an accessible format.

How a Voter with Disabilities may request a Mail Ballot, RAVBM, or Replacement Ballot

§4005(a)(5), §4005(a)(10)(I)(ii)

With the move to vote centers, a person with a disability can request a mail ballot, RAVBM, or replacement ballot via the website, through email, over the phone, in written form, or in person at the Registrar's office. A voter may also request RAVBM through the postage-paid postcard included in every Voter Information Pamphlet. In addition to these options, voters will also be able to request a replacement ballot and vote in-person at any vote center.

Remote Accessible Vote-By-Mail (RAVBM)

§4005(a)(8)(B)(i)(IV)

San Diego County registered voters with disabilities may request a downloadable ballot by connecting to the Registrar's remote accessible vote-by-mail (RAVBM) system. RAVBM provides voters with disabilities the ability to request access to a mail ballot electronically. The ballot can be downloaded to the voter's computer, marked using the voter's own assistive technology and then printed. Instructions are provided in the RAVBM system.

As with any mail ballot, RAVBM ballots must be sealed inside a return envelope as provided in the system's instructions, signed and returned by mail or at any vote center or official ballot drop box location.

Return instructions are also available in the voter information pamphlet sent to every voter's mailing or email address.

Type and Number of Accessible Ballot Marking Devices

§4005(a)(2)(B), §4005(a)(4)(D), §4005(a)(10)(I)(vi)(X)

All San Diego County vote centers will be equipped with a minimum of eight fully accessible ballot marking devices and may expand the number of devices dependent on the voting room size and voter needs. All voters are offered the use of these accessible ballot marking devices.

A voter can mark their ballot using the touchscreen display, audio tactile device, or their own assistive technology. The ballot marking devices provide voters with disabilities an autonomous voting experience. Ballot marking devices will be arranged to allow all voters the opportunity to cast their ballot privately and independently.

Type and Number of Reasonable Modifications at Vote Centers

§4005(a)(6)(D), §4005(a)(10)(I)(vi)(X)

There are multiple types of reasonable modifications that will be offered inside vote centers. A minimum standard of eight accessible ballot marking devices, and physical modifications will be in place to support voters with disabilities.

Magnifiers and signature guides are available and prominently displayed at each check-in station. Chairs will be available if needed at check-in stations and at the accessible voting units. If a voter needs additional assistance, vote center employees will be available to assist a voter as a visual guide through the voting room, or to read out any information they may not be able to see.

In addition to the modifications mentioned above, each vote center will be surveyed for accessibility. If needed, facilities may be provided with threshold ramps for short rises to enter rooms, cones to identify hazards, and mats to cover slipping hazards. Most facilities will be asked to leave doors to the voting room open for accessibility.

Each vote center will have signs with a phone number a voter may call to request curbside voting without entering the vote center.

Mobile Voting

The Registrar's office will continue to seek opportunities and funding to bring mobile voting to voters in unique locations and geographic areas where voters might otherwise have limited access to in-person voting options. Staff are researching the optimal approach for providing these services such as considering the use of a "pop-up" type vote center location or a self-contained mobile unit.

The Registrar's office is also researching the potential use of the county's Live Well Mobile Office as a mobile vote center.

Toll-Free Voter Phone Line

§4005(a)(10)(I)(vii)

The public will be provided a toll-free voter phone number to direct voters to the accessibility features in order to ask questions and receive voting and election-related information. The toll-free phone number will be published on the Registrar of Voters website and provided in media outreach and direct voter contact information including the Voter Information Pamphlet.

Voters who are deaf, hard of hearing, or speech-disabled may use the California Relay Service (CRS) by dialing 711 to use the telephone system via a text telephone (TTY) or other device to call the Registrar of Voter's office toll-free voter phone number. CRS supports the following modes of communication: TTY, VCO, 2LVCO, HCO, STS, VASTS, ASCII, or Voice.

Video Conferencing

The Registrar's office is researching options for providing American Sign Language interpretation assistance upon request at vote centers and will consult with its VAAC and the Deaf Community Services of San Diego (DCS) to assess the need and/or the viability of recruiting ASL proficient poll workers to assist voters in-person at vote centers.

Language Assistance Services

The Registrar of Voter's office provides comprehensive language assistance services to voters. From having dedicated bilingual staff prepare culturally appropriate translations and maintaining an extensive event calendar, the Registrar's office is committed to providing numerous opportunities for language communities to learn about the transition to vote centers.

The Registrar's office has full-time bilingual employees overseeing each of the county's federally covered languages and during each countywide election cycle we make every effort to recruit and hire bilingual seasonal employees in each of the county's state covered languages.

The Registrar's office goes above and beyond what is required by state and federal law by utilizing the county's interpreter service where appropriate. Most recently a Somali interpreter was brought in for a public meeting targeting the Somali speaking community.

Translated Reference Ballots and Language Assistance

§13400

Per California Elections Code §14201, the Registrar's office is required to provide translated reference ballots for targeted precincts and information indicating that translated reference ballots are available for targeted precincts. The Registrar's office will have a complete set of translated reference ballots for targeted precincts at every vote center.

Language Assistance Services included in Voter Information Pamphlets or Mail Ballot Instructions and Website

§4005(a)(8)(B)

Voters will be notified of their ability to request translated election materials and language assistance services in the Voter Information Pamphlet and mail ballot instructions.

The website will provide the complete list of language assistance services. Currently, the Registrar's office utilizes [Language Assistance \(sdvote.com\)](https://sdvote.com) to provide information on language assistance services under the polling place model. This webpage will be updated to reflect language assistance services available under the vote center model.

Bilingual Vote Center Staffing and Supported Languages

§4005(a)(10)(I)(vi)(IX)

The Registrar's office will determine which vote centers are located in or adjacent to a precinct that meets language requirements under the federal Voting Rights Act (VRA) for in-person language assistance. In addition, the Registrar's office will solicit public input regarding which vote centers should be staffed by individuals who are fluent in specific languages, pursuant to subdivision (c) of §12303 and §203 of the federal Voting Rights Act. Every effort will be made to recruit and assign bilingual vote center staff to these vote centers.

At vote centers identified as meeting language assistance requirements, voters will still have alternate options to receive effective in-language assistance such as translated written materials, or assistance over a telephone call.

The Registrar's office will continue to collaborate with the community to provide Somali speaking bilingual staff at targeted vote centers which is above and beyond what is required by state and federal law.

Toll-Free Voter Phone Line and Voter Call Center

§4005(a)(10)(I)(vii), §4005(a)(10)(I)(i)(I)

Leading up to Election Day, the Registrar's office operates a call center that is staffed with bilingual operators and utilizes an interpreter call-in service to assist voters (in-language) with questions before, during, and after an election. The toll-free call center number is (800) 696-0136 and it has been activated.

The toll-free phone number will also be published on the Registrar's office website, public service announcements, marketing materials, and provided in media outreach and direct voter contact information including the Voter Information Pamphlet. There is one toll-free number to serve the public, including language communities.

Voting Technology

Electronic Roster of Voters (E-pollbooks)

Electronic pollbooks (e-pollbooks) replace paper rosters and provide a mechanism to ensure efficient and secure processing of eligible voters at any vote center location. These e-pollbooks contain an electronic list of registered voters (Roster of Voters) that are used at vote centers. The Roster of Voters is the official list of all registered voters eligible to vote in the election. E-pollbooks may be used to verify voter registration data, including name, address, date of birth, preferred language, party preference, precinct, and vote-by-mail status. However, e-pollbooks never store driver's license number, or any reference to a social security number. They provide better searching and more up-to-date voter status information than a paper roster, creating a better voting experience for voters.

The e-pollbooks exchange voter status updates with the voter registration system in a protected, encrypted way, which enables the staff at the vote center to better verify a voter's eligibility to receive a ballot and prevent double voting. The registration system shares that information through its connection to the VoteCal system. VoteCal is the centralized statewide voter registration database that interacts and exchanges information with county registration database and other state systems such as Department of Corrections and Rehabilitation, Department of Public Health, and the Department of Motor Vehicles.

Voting System

The Registrar of Voters follows strict chain of custody requirements for voting system software and hardware throughout the testing, certification, and operating process. As part of the certification process, San Diego County's voting system went through rigorous functional and security testing conducted by the Secretary of State's office and a certified voting system test lab in order to ensure the system's compliance with California and federal laws, including the California Voting System Standards (CVSS) which are the strictest in the nation. The county's certified voting system software and hardware is used in an environment where chain of custody and software integrity is strictly controlled.

Security is built into every aspect of county's voting technology. As part of the rigorous voting technology certification process, an independent third-party testing authority conducted source code review and evaluation, hardware and software security penetration testing, and operational testing to validate system performance and functioning under normal and abnormal conditions. This was done to identify any

vulnerabilities in the code requiring voting system vendors to resolve or mitigate prior to certification to essentially prevent any issues with the county's elections.

The Registrar's office strict chain of custody requirements, including personnel requirements, protects the source code from breaches and the post-election reviews and audits establish compliance between voted ballots and the voting system.

In addition, the county's voting system is paper based, meaning the Registrar's office has a paper ballot trail for every vote cast.

Ballot Marking Device (BMD)

Every vote center will have a minimum of eight touchscreen ballot marking devices that will print out an official paper ballot with the voter's choices that they can review before placing the ballot in the official ballot box to be counted at the Registrar's office.

Voters visiting these locations to cast their ballot in person will mark their ballot using the device. This device does not store, tabulate or count any votes and it does not store any voter information.

There is a reason why these devices are called ballot marking devices. The voter marks their selection on the screen. Then, on the paired printer the voter will print out their official ballot with their selections. This official paper ballot is what goes inside the official ballot box to be tabulated at the Registrar of Voter's office.

The ballot marking devices are fully compliant with the Americans with Disabilities Act. In addition to English, voters can select a translated ballot in one of the County's four federally covered languages: Spanish, Filipino, Vietnamese, and Chinese.

Vote center staff will start a voter's session by activating the device. Voters choose the language and make their selections by touching the screen next to voting choices. Voters can review their choices and make corrections if necessary on-screen, then tap "print ballot" to print out their official ballot. After reviewing their selections, voters can place their ballots in the secrecy sleeve or envelope given to them by vote center staff and may place it in the ballot box or give it to vote center staff to place in the ballot box for them.

Instructional videos will be available at sdvote.com.

Voting Security

The Registrar's office aggressively pursues security measures to protect the integrity of our elections by paying attention to issues related to ballot integrity and voter registration systems. Although threats are constantly changing and incidents are unique, there are best practices and strict protocols in place to prepare for threats and incidents.

The Registrar's office continues to improve our current systems through hardware and software lifecycle management practices. The Registrar's office has implemented physical and cybersecurity controls while incorporating training for employees.

There are strict access controls in place securing the room where the voting system resides. Each room in the Registrar's office has ceiling mounted cameras directed at entry and exit areas for additional security precautions.

Security and Contingency Plans to Ensure Prevention of Disruption

§4005(a)(10)(I)(vi)(VIII)(ia)

The Registrar's office has a multi-pronged approach to ensure prevention of disruption to election operations through partnerships, internal controls, and procedures.

State, Federal, and Local Partnerships

The Registrar's office has developed a relationship with the San Diego County Chief Technology Office (CTO) and the current Information Technology Outsourcer (ITO) – who manages the county's IT network. The Registrar's office also has a direct relationship with the California Secretary of State, Department of Homeland Security (DHS), Federal Bureau of Investigation (FBI) and the Election Assistance Commission (EAC).

There is increased collaboration around election cycles before and after the election. The Registrar's office enhances security awareness and communication, including regular meetings with the County's CTO, ITO, Sheriff, DHS, and the FBI.

Internal Controls

From a technical perspective, the Registrar's office includes a multi-layered approach to ensure the data remains encrypted and secured at all times. Physical security is also a consideration when choosing a location to host a vote center. Only facilities that provide adequate physical security will be chosen.

Mobile device management allows total control of securing and enforcing policies related to e-pollbook tablets. Mobile device management allows for the ability to

remotely wipe a device, use password enforcement, and enable software updates as needed.

Every vote center will have a smartphone for notification in the event of an emergency. Vote center staff will also receive training and instructions in their reference manual on what procedures to follow should there be an emergency. Voting equipment will have battery back-up in the event there is a loss of power.

Procedures, Methods and Standards

Chain of custody procedures are used as an administrative control as part of the overall strategy to secure election operations. The chain of custody procedures ensures that physical tracking of voting system equipment is in place.

Voting system components are secured within a secure location until deployed for the election. Ballot marking devices are placed in numerically sealed transportation containers. All voting equipment is tracked with RFID labels when deployed and returned to the Registrar's office.

Election workers sign chain of custody documents, known as seal verification logs, for voting equipment at distribution locations. Election workers and vote center staff will be required to check the security seals periodically and report any broken seals or suspicious activity. Voting equipment is inventoried and placed in a secured location.

Security and Contingency Plans to Ensure Continuation of Election in Event of Disruption

§4005(a)(10)(I)(vi)(VIII)(ib)

The Registrar's office has a continuity of operations plan in place to mitigate or prevent disruptions in the elections process; however, it is equally important to be prepared to respond to the real possibility of an incident or disruption. This section outlines the steps taken to be prepared to continue elections operations in the event of a disruption.

Vote Center Response During the Voting Period

During the voting period, election support personnel are located throughout San Diego County, ready to respond to any incident. These field personnel have replacement voting equipment and supplies and are trained to handle technical issues. Vote center employees have emergency contact information, including a dedicated helpdesk that can quickly resolve issues, or dispatch a member of the support team in the field.

All vote center equipment functions independently. If one piece of equipment stops functioning, it does not impact the operation of other voting equipment.

Continuity of Operations Plan

The Registrar's office has an in-depth plan that can be used in the event of a cybersecurity incident or outage. This plan provides a systematic way to identify, address and recover from an incident.

Essential functions and their associated information technology dependencies have been identified to ensure ongoing elections operations in the event of a disruption. It provides a framework for determining critical business processes and enabling the organization to survive the loss of part or all operational capabilities.

Delegations of authority have been set to avoid misinformation and manage the dissemination of information to voters, staff, and media during a disruption, as well as make policy determinations and decisions for functional areas of the department as appropriate.

Methods and Standards

§4005(a)(10)(I)(iv)

The purpose of the continuity plan is to allow election operations to continue in the event of a disaster, an incident, or a service disruption. By identifying the procedures for essential functions, processes, communications, and alternate facilities, most foreseeable disruptions to elections operations can be mitigated.

Essential Functions

The continuity plan identifies all essential functions required to run an election. Each of these essential functions are analyzed, and the technical dependencies for each are determined. For each of the technical dependencies, a recovery strategy is defined, including the restoration of required data.

Communications

The continuity plan also addresses modes of communication, and how communication can continue during a disruption. This includes alternate modes of communication in the event the primary system fails. Responsibilities are assigned for disseminating information, and key stakeholders with whom it will be required to communicate in the event of a disruption. The process that is disrupted determines with whom the communication needs to occur. For example, some disruptions will require communication to only vote center staff, while other disruptions may require communication to the media and general public.

Alternate Facilities

Alternate facilities are designated for local disasters, such as fires, floods, or other situations that would not allow access to our main facilities.

For vote centers affected by a disaster or power outage, voting activities can be relocated to another part of the facility. Ballot marking devices and E-pollbooks have battery backup and could be moved outside for temporary use due to a short-term loss of indoor access. If voting activities cannot continue then nearby locations will be contacted and voters will be provided guidance on where to go. Signage will be posted at any affected locations and information related to the relocation will be disseminated through local media outlets.

Fiscal Impact

Estimates of Short-Term and Long-Term Savings

§4005(a)(10)(I)(v)

The following tables show a breakdown of the one-time and ongoing costs and savings associated with conducting elections pursuant to the Voter's Choice Act. The Registrar's office has invested in its voting system, matured its processes, and increased its capacity over the years to manage such an already large percentage of voters who prefer voting by mail and is well positioned moving forward to manage the processing of mail ballots accurately and securely.

Equipment Costs	FY 2019-20 <i>July 1, 2019 - June 30, 2020</i>	FY 2020-21 <i>July 1, 2020 - June 30, 2021</i>	FY 2021-22 <i>July 1, 2021 - June 30, 2022</i>	FY 2022-23* <i>July 1, 2022 - June 30, 2023</i>
New Voting System	\$13,176,841		\$512,063	\$873,833
Electronic Roster of Voters (ePollBooks)	\$243,740	\$1,870,488		
Network Equipment		\$932,259		
Mail Ballot Extractors	\$61,231	\$301,084		
MBDO boxes				\$500,000
TOTAL EQUIPMENT COSTS	\$13,481,812	\$3,103,831	\$512,063	\$1,373,833

*Proposed Budget

	COSTS	SAVINGS
Poll Worker Stipends (Traditional Polls Model)		\$1,150,000
Wireless Connectivity (Vote Centers)	\$36,000	
Equipment Lease (Vote Centers)	\$65,000	
Election Workers (Vote Centers)	\$5,000,000	
Additional Voter Outreach & Education under the VCA	\$1,900,000	
TOTAL	\$7,001,000	\$1,150,000

As a result of the transition to the Voter's Choice Act, the County of San Diego expects to see savings from no longer paying the nearly 10,000 poll workers a stipend to work on Election Day. However, ongoing costs are expected as a result of providing wireless connectivity for ePollbooks (Roster of Voters) to use at each vote center. In addition, poll workers will be paid an hourly wage for multiple days of work since vote centers will be opened more days. Finally, there are additional costs for voter outreach and education as a result of the new requirements.

The Registrar's office will continue to analyze the effects of the Voter's Choice Act on long-term costs and savings associated with conducting elections under this new model.

Overview of Voter Education and Outreach Plan

§4005(a)(10)(I)(i), §4005(a)(10)(I)(i)(VI)

Background

The Registrar's office already has a robust voter education and outreach program with five dedicated full-time staff along with an additional 18 to 20 seasonal staff during election cycles. Our outreach coordinators have strong and well-established relationships with community leaders and stakeholders. We are committed to cultivating new partnerships with community organizations, as well as strengthening our existing relationships with community partners during the transition to the vote center model.

It has been challenging during the pandemic but historically we have participated in well over 300 community events and meetings each year. Through 2020 and 2021 much of this work was done virtually and with COVID-19 still looming we will continue using a virtual platform as appropriate.

Fortunately, we can leverage our recent voter engagement activities and the exposure gained through conducting the last two statewide elections in 2020 and 2021 under a "Vote Center" type model. The comprehensive outreach campaigns associated with those elections will only support our efforts moving forward.

"VCA-like" November 2020 Presidential General Election Cycle:

During the November 2020 election cycle the Registrar's office sent two direct mailings to all registered voters informing them of the upcoming changes in the election and their voting options. We placed 165 newspaper ads across 43 different newspapers in San Diego County, including in-language newspapers.

We ran nearly 450 audio ads across 12 different radio stations, including in-language outlets, plus additional streaming ads.

In addition to traditional and digital advertising, the Registrar's office strategically utilized large outdoor posters on the exterior walls of gas stations, convenience stores, and bodegas located in underserved neighborhoods. In total, we placed posters around 45 different locations in San Diego County. We created four poster designs, each poster included English messaging and featured a language that is represented in the specific neighborhood. This tactic allows the Registrar's office to target neighborhoods where other forms of traditional media can't always reach.

Additional digital media included five email blasts, display ads, Facebook, Instagram, and Twitter ads that targeted the general market, federally covered languages, and communities of color. We also developed and aired 30 Public Services Announcements available in five languages.

This campaign delivered over 90 million impressions.

“VCA-like” September 2021 Gubernatorial Recall Election Cycle:

During the most recent September 2021 recall election, we placed 35 newspaper ads across 28 different newspapers in San Diego County, including in-language newspapers. We placed audio ads across 12 different radio and streaming stations, including in-language outlets and ran approximately 1500 ads on traditional radio.

In addition to traditional and digital advertising, the Registrar’s office again utilized the large outdoor posters in underserved neighborhoods based on targeted zip code selections. We found this to be a successful tactic in 2020. In total, we placed posters at 65 different locations across San Diego County.

Additional digital media included two email blasts, display ads, Facebook and Twitter ads, again targeting our general market, and communities of color.

This campaign delivered over 57 million impressions.

Both campaigns informed San Diego County voters of their voting options consistent with the Voter’s Choice Act, including that all active registered voters will automatically receive a ballot in the mail nearly a month before Election Day, voters can return their ballot by mail, or at any ballot drop off or voting location, and in-person voting is available over multiple days at any one of the 200+ locations across the county.

These two statewide elections gave San Diego County quite an advantage as we now officially transition to the Voter’s Choice Act. The Registrar’s office has already gone to great lengths to prepare voters for any changes they may find in the upcoming election. The 2022 outreach efforts and media campaign will continue to reenforce voting options and that now these changes voters have already experience are permanent for all future elections.

The Registrar’s office will continue to participate in outreach events that have been historically attended, as well as develop creative and more effective ways of communicating to voters. This Voter Education and Outreach Plan will highlight outreach events the Registrar’s office will coordinate and/or attend, outline messaging strategies that will increase our presence in the community, and detail how resources will be allocated more efficiently through the analysis of key data points.

Summary of Goals

- Voter education workshops/demonstrations
- Vote Center community presentations
- Community engagement events

- Partnerships with colleges and universities
- Partnerships with high schools
- 2 – 4 direct voter contacts
- Robust multilingual, targeted media campaign
- Increased social media presence

Community Partners

§4005(a)(10)(I)(i)(III)

Successfully maintaining a community outreach program includes maintaining established partnerships with community-based groups and organizations. The Registrar's office regularly meets with dedicated individuals from various organizations across San Diego County including advocacy groups, civic groups, citizen leagues, senior centers, churches, city clerks, political parties, and other individuals. Community partners are listed starting on page 52 in Appendices.

Voter Accessibility Advisory Committee & Language Accessibility Advisory Committees

§4005(a)(9)(A), §4005(a)(9)(B), §4005(a)(10)(I)(i)(I)

The Registrar's longstanding Voter Accessibility Advisory Committee (VAAC) and Language Accessibility Advisory Committees (LAAC) are designated to focus on the needs of voters with disabilities and minority language communities.

The mission of the LAAC is to advise and assist the Registrar's office with implementation of federal and state laws relating to access to the electoral process by voters with limited-English proficiency.

The LAAC also provides recommendations identifying and prioritizing activities and programs to ensure equal access to the ballot. The responsibilities of the committee include providing expertise on language accessibility issues; providing recommendations identifying and prioritizing activities; and responding to the office's questions regarding language support.

The mission of the VAAC is to advise and assist the Registrar's office with providing services to voters with accessibility needs and explore all opportunities to provide equal access to the ballot.

The VAAC also provides recommendations identifying and prioritizing activities and programs to ensure voters with disabilities can independently cast a ballot. The responsibilities of the committee include providing expertise on accessibility matters; incorporating accessibility procedures into operations; and providing feedback to the

Registrar's office regarding accessibility standards and outreach to voters with disabilities.

LAAC and VAAC meeting agendas and a list of members and supporting organizations for each group can be found starting on page 62 in Appendices. Language community partners and disability community partners are listed on page 52 and 55 in Appendices.

[Voter Education Workshops for Language Communities](#)

§4005(a)(10)(I)(i)(VI)(ia)

Following the final publication of the EAP, the Registrar's office will host voter education workshops to provide vote center and election information for each of San Diego County's federal and state required languages. The federally covered languages include Spanish, Filipino, Vietnamese, and Chinese. The state covered languages include Arabic, Japanese, Korean, and Laotian.

Each workshop will include information about the vote center model, voting equipment overview/demonstration, language assistance services, ballot drop-off options, and methods to request translated election materials. Information about the workshops will be announced at least 10 days in advance of the date and will be shared with the LAAC and language community organizations.

The Registrar's office will partner with the LAAC and its language community partners to determine the number of workshops, dates, times, and locations, and what materials to distribute to best serve voters with language needs.

[Methods to Identify Language Communities](#)

§4005(a)(10)(I)(i)(V)

The Registrar's office utilizes the number of voters who request language assistance through voter registration forms. Voters may also notify the Registrar's office of their language preference by telephone, fax, email or online to update their language preference. Sources such as the United States Census Bureau help identify areas where there may be communities that have limited-English proficiency and may need language assistance.

In addition, the Registrar's office receives input from language community partners on the geographic distribution of where language communities exist in San Diego County.

Toll-Free Voter Phone Line and Language Assistance

§4005(a)(10)(I)(vii), §4005(a)(10)(I)(i)(I)

Leading up to Election Day, the Registrar's office operates a call center that is staffed with bilingual operators and utilizes an interpreter call-in service to assist voters (in-language) with questions before, during, and after an election. The toll-free call center number is (800) 696-0136 and it has been activated.

The toll-free phone number will also be published on the Registrar's office website, public service announcements, marketing materials, and provided in media outreach and direct voter contact information including the Voter Information Pamphlet. There will be one toll-free number to serve the public, including language communities.

Voter Education Workshop for Disability Community

§4005(a)(10)(I)(i)(VI)(ib)

Following the final publication of the EAP, the Registrar's office will host voter education workshops to increase accessibility and participation of eligible voters with disabilities. The workshops will include education about the vote center model, voting equipment overview/demonstrations, the accessibility of the voting equipment, ballot drop-off information, and options for obtaining an accessible vote-by-mail ballot.

The Registrar's office will partner with the VAAC and its disability community partners to determine the number of workshops, dates, times, and locations, and what materials to distribute to best serve voters with disabilities. Possibilities include developing instructional and informational outreach materials on topics such as RAVBM and available services for voters with disabilities at vote centers.

Information about the workshop events will be announced at least 10 days in advance of the date and it will be shared with the VAAC and disability community organizations.

Remote Accessible Vote-By-Mail Outreach

§4005(a)(10)(I)(i)(II)

The Registrar's office will develop an outreach plan to inform voters of the availability of RAVBM in partnership with the VAAC. Different strategies will be created based on the target audience and best practices on how to reach them. This will be implemented as a part of the larger overall media strategy for informing and engaging voters leading up to the June 7, 2022 Gubernatorial Primary Election.

High Schools

The Registrar's office has strong relationships with high schools through its Student Poll Worker Program. The program allows students to participate as poll workers on Election Day and gain hands-on experience in the democratic process.

In addition, the Registrar's office will leverage its existing relationships with high schools to provide pre-registration opportunities, voter registration training, and information on how elections are conducted under the vote center model.

Colleges and Universities

There are over twenty colleges and universities in San Diego County. The Registrar's office has built relationships with many colleges and universities through hosting polling places and mail ballot drop-off locations, as well as supporting voter education efforts and voter registration training to student organizations. The Registrar's office has already begun planning efforts with colleges and universities to host a vote center or mail ballot drop box location on campus.

Detention Facilities, Probation, and Parole

The Registrar's office has established relationships with county detention facilities, and the probation department to provide voter registration training, election information, news stories, flyers and posters, updates, and we remain available to answer questions of staff as they assist voters throughout the year.

We also coordinate the receipt of voter registrations, distribution of ballots including conditional voter registration, and the return of ballots for each county detention facility.

We provide volunteer training to outside organizations that have arranged with the Sheriff's department to register individuals at the county detention facilities.

We will continue to work with community organizations and advocates to identify how we can support efforts to inform those on probation or on parole of their rights to register and vote.

The Registrar's office will develop posters with tailored messaging to be hung at probation and parole offices and in the recommended communities of Southeast San Diego, National City, City Heights, Barrio Logan, and North County.

Voter Engagement and Community Events

Participating in events throughout San Diego County is an integral part of the Registrar's voter outreach program. Covering a diverse and expansive area, these efforts aim to achieve the following goals:

- Educate voters on the transition to the vote center model and voting options
- Provide information and allow opportunity for individuals to register to vote
- Network and pursue collaborative opportunities

As many groups exist within San Diego County, participation in community events allows the Registrar's office to promote services, build partnerships, and interact with various communities. Targeted groups have included, but are not limited, to the following:

- Community groups
- Churches
- Citizenship classes
- Language Groups
- Rotary clubs
- High Schools
- Universities
- Professional associations
- Student organizations
- Public service agencies
- Cultural clubs
- Non-profit organizations
- Youth groups
- Service organizations
- Senior citizen centers

Community Events

To maintain presence in the community, the Registrar's office will continue to focus its community outreach efforts on small-to-medium and large-scale events. The Registrar's office will be present at these events to register eligible voters and to provide information about the transition to the Vote Center model, voting, and other election information. Staff will engage the public, answer questions, and assist in filling out voter registration forms.

By participating in these events, the Registrar's office will have access to thousands of individuals in communities throughout San Diego County. A list of potential community events being pursued in the 2022 election cycle is available on page 50 in Appendices.

General Media Plan

§4005(a)(10)(I)(i)(I)

To inform San Diego County voters of the upcoming changes to voting and elections, the Registrar's office will take an expansive approach to reach as many voters as possible, multiple times. Advertising tactics include, but not limited to, social media, direct mailing, print, broadcast, video, digital, outdoor posters, audio, and radio. The Registrar's goal is to saturate the spectrum of media outlets for voters to increase the potential for a voter to see informational and marketing materials.

In addition to reaching the general market, the media campaign will feature in-language ads targeting hard to reach communities, low voter turnout areas, underserved populations, and more.

Media Partners

§4005(a)(10)(I)(i)(II), §4005(a)(10)(I)(i)(VIII)

The Registrar's office will provide news stories, video, and social media content for mass distribution and publication to existing media partners and seek out other trusted media sources to relay information. Accessibility options, methods to request an accessible ballot, vote center and ballot drop box locations, other general election information and other voting updates will be shared with media partners. For a list of media partners, please see page 57 in Appendices.

News stories will be posted through the [County News Center](#) which will position information as timely and critical. Stories posted through the County News Center are shared and disseminated to the public through the local media. All stories are translated in Spanish, Filipino, Vietnamese, and Chinese and sent to the appropriate language media outlets.

Additionally, the Registrar often appears on local media to provide up to date information related to the election.

Language Media Partners

§4005(a)(10)(I)(i)(I)

San Diego County's diverse communities receive news updates and information from a variety of sources, including language media outlets. The Registrar's office has dedicated full-time staff to serve as liaisons to language communities and have developed strong relationships with language media partners in communities that speak Spanish, Filipino, Vietnamese, and Chinese. Information on the upcoming election and

the toll-free voter assistance hotline will be shared with language media partners. For a list of language media partners, please see page 59 in Appendices.

Direct Voter Contacts

§4005(a)(10)(I)(i)(X)

The Registrar's office plans to send two to four direct mailings to inform all registered voters of the availability of the toll-free voter assistance hotline and the upcoming changes to elections and voting. The mailers may vary in size but will be designed to catch the attention of the voter with vote center branding and messaging. The mailers may also provide information such as voting options, vote center and ballot drop box locations and hours, and when to expect a Voter Information Pamphlet or official mail ballot packet.

Each mailer will be translated into each of the county's federally covered languages. The English version of the mailer will include messaging in each of the county's federally covered languages describing how a voter can obtain the mailer or other election materials in another language.

The first mailer will go out approximately 99 days before Election Day (E-99) with a second mailer going out just prior to the vote centers opening (around E-22). In addition to these mailers, targeted messaging will also be included in the county's Voter Information Pamphlet starting to go out at E-40 and in the official mail ballot packet going out at E-29.

A sample of the first mailer can be found on pages 97 and 98 in the Appendices.

Postage-Paid Postcard for Requesting Materials in an Alternate Language or an Accessible Format

§4005(a)(8)(B)(iii)

All registered voters will receive a postage-paid postcard in their Voter Information Pamphlet to request a mail ballot in an accessible format and to request election materials in alternate languages per §14201 of the California Elections Code and §203 of the federal Voting Rights Act. Instructions will be included in the pamphlet and on the Registrar's website for completing and returning the postcard.

Public Service Announcements

§4005(a)(10)(I)(i)(VIII), §4005(a)(10)(I)(i)(IX)

The Registrar's office will create visual and audio PSAs in varying lengths and themes to inform voters of the upcoming election (translated in all federally covered languages).

The content will be informational as well as instructional such as notifying voters of the upcoming election and options for casting a ballot. Videos and audio will promote the toll-free, accessible voter hotline to ask questions and receive voting and election-related information.

The videos will be open-captioned and be in accessible formats to be inclusive of voters who are hard of hearing or deaf and voters who are blind or visually impaired. Additionally, videos will be audio-recorded in Spanish, Filipino, Vietnamese, and Chinese. Content will be provided to general media partners and language media partners. Please see page 57 in Appendices for a list of general media partners and page 59 for language media partners.

Social Media

The Registrar's office will use social media to attract new voters and to provide information to existing voters about the change to vote centers and updates on critical deadlines, voting tips, vote centers and ballot drop box locations.

The Registrar's office will utilize Facebook, Instagram, Twitter, and Nextdoor to promote vote center information and target languages (English, Spanish, Filipino, Vietnamese, and Chinese) and populations in San Diego County such as African American, American Indian, Hispanic/Latino, Filipino, Vietnamese, and Chinese.

Below are social media strategies to achieve the overall goals of informing and educating voters about the transition to the vote center model:

- Sponsored posts across social media channels that are targeted to users based on location, demographics, user interests, behaviors, and user preferences
- Create a monthly social media calendar that shares important election information including deadlines, voting options, and more
- Place the Registrar's office as the official resource of election information in San Diego County by sharing important election information, breaking down the voting process, dispelling election misinformation, and responding to voter's most asked questions
- Create eye-catching content including graphics and videos to keep voters engaged and informed

Outdoor Posters, Transit Shelters and Billboards

In addition to traditional and digital advertising, the Registrar's office will strategically utilize neighborhood billboards and large outdoor posters at gas stations, convenience stores, grocery stores, liquor stores, and bodegas as well as advertising in transit shelters located in hard-to-reach neighborhoods based on targeted zip code selections

and the Center for Inclusive Democracy mapping tool. Each display will feature English and a language that is represented in the specific neighborhood.

These tactics allow the Registrar's office to target neighborhoods where other forms of traditional media can't reach.

For a past sample of large poster locations please see page 60 in Appendices. All locations are subject to availability.

[Website](#)

§4005(a)(10)(I)(i)(IV)

The Registrar's website, sdvote.com will be utilized heavily as the main source of vote center information and materials for the public. Information on the website is in accessible formats and is publicly available. This will include the EAP, methods to request an accessible mail ballot, the ability to use an accessible ballot marking device and how to use it, lists of vote centers and ballot drop box locations, and other information related to the VCA.

Materials on the website are also translated into the Registrar's federally covered languages so voters with limited-English proficiency in these languages will be able to access important election information.

Projected Budget for Voter Outreach

§4005(a)(10)(I)(i)(VII), §4005(a)(10)(I)(i)(VII)

The transition to the voter center model is a fundamental change for San Diego County voters and will require significant funding for the multiple facets of the Voter Education and Outreach Plan through the 2022 election cycle.

Voter Education and Outreach Funding and Comparison to Past Budgets

	FY 2019-20	FY 2020-21	FY 2021-22			FY 2022-23
Activity	Presidential Primary Election	Presidential General Election	Gubernatorial Recall Election	AD 80 Special Primary Election	Gubernatorial Primary Election	Gubernatorial General Election
Advertising (social media, print, broadcast, video, digital, outdoor posters, billboards, audio & radio)	\$34,500	\$703,115	\$650,000		\$650,000	\$650,000
Direct Mailers (sent to all registered voters)	\$562,664	\$964,061	\$347,000	\$155,704	\$1,556,108	\$1,506,108
Newspaper Legal Ads (in addition to advertising noted above)	\$84,238	\$62,174	\$45,945	\$10,000	\$75,000	\$75,000
Miscellaneous Advertising (campaign and ad buy management, design, artwork & video creation)	\$15,552	\$251,493			\$235,000	\$220,000
Miscellaneous Outreach Operations (facilitation, interpreters, and translation services)					\$70,753	\$30,000
Voter Outreach & Education Program (program & staffing costs)	\$1,015,173	\$1,087,491	\$477,130	\$119,283	\$834,978	\$1,163,798
	<i>Actuals</i>	<i>Actuals</i>	<i>Actuals</i>	<i>Budget</i>	<i>Budget</i>	<i>Preliminary Budget</i>
Additional Funding						
California Secretary of State - Voter's Choice Act (VCA) Outreach and Education Services					\$250,000	\$250,000
TOTAL BUDGET (OUTREACH & EDUCATION)	\$1,712,127	\$3,068,334	\$5,476,900			\$3,894,906

Appendices

Public Meetings

In developing of the EAP, the Registrar's office hosted well over the minimum number of public meetings in San Diego County to gather input from the public. These meetings gave attendees the opportunity to learn about the upcoming transition to the vote center model and provide feedback.

To be inclusive of targeted communities, language assistance was provided at select meetings and particular meetings were promoted to the disability community. Additional public meetings above and beyond what is required by state and federal law were held for Native American and Somali communities.

Targeted Communities	Number of Meetings
Disability Community	4
Seniors	1
Hispanic/Latino	5
Vietnamese	5
Chinese	5
Filipino	6
Japanese	3
Korean	3
Arabic	4
Laotian	1
Additional Communities	Number of Meetings
Native American	2
Somali	1

Public Meeting Schedule

Full schedule of vote center public meetings is provided below.

Date & Time	Language	Community Focused	In Person or Virtual?	Location Address
12/9/2021 6 PM to 8 PM	English/Vietnamese	Vietnamese	Both	Mira Mesa Rec Center: 8575 New Salem St, San Diego
12/10/2021 5 PM to 7 PM	English	Native American	In Person	Alpine County Library: 1752 Alpine Blvd. Alpine
12/10/2021 5:30 PM to 8 PM	English/Filipino	Filipino	Both	Registrar of Voter's office: 5600 Overland Avenue, San Diego
12/14/2021 5 PM to 7 PM	English	Native American	In Person	Valley Center County Library: 29200 Cole Grade Road, Valley Center
12/14/2021 6 PM to 8 PM	English/Spanish	Hispanic/Latino	Both	Chula Vista Public Library Civic Center: 365 F St, Chula Vista
12/15/2021 1 PM to 3 PM	English/Chinese	Chinese	Both	4S Ranch San Diego County Library Branch: 10433 Reserve Dr., San Diego
12/15/2021 5 PM to 7 PM	English/Filipino	Filipino	Both	Oceanside Public Library Mission Branch: 3861 Mission Ave, Oceanside
12/16/2021 6 PM to 8 PM	English	General (coordinated with NAACP)	Virtual	
12/18/2021 10 AM to 12 PM	English/Vietnamese	Vietnamese	Both	Wesley United Methodist: 5380 El Cajon Blvd, San Diego
12/18/2021 2 PM to 4 PM	English/Filipino	Filipino	Both	Skyline Hills Library 7900 Paradise Valley Road, San Diego
1/4/2022 6 PM to 8 PM	English/Spanish	Hispanic/Latino	Both	Skyline Hills Library 7900 Paradise Valley Road, San Diego
1/5/2022 11 AM to 1 PM	English/Chinese	Chinese	Both	Mira Mesa Chinese Baptist Church: 3317 Clairemont Mesa Blvd, San Diego
1/5/2022 5:30 PM to 7:30 PM	English	General (coordinated with The Center)	Virtual	
1/6/2022 5 PM to 7 PM	English/Arabic	Arabic	In Person	El Cajon Branch Library: 201 E Douglas Ave, El Cajon
1/11/2022 10 AM to 12 PM	English	Senior Citizens and Disability Community	Virtual	
2/26/2022 1 PM to 3 PM	English/Somali	Somali (coordinated with PANA)	In Person	Colina Park 4085 52 nd Street, San Diego
1/24/2022 5:30 PM to 7:30 PM	English, ASL, Spanish, Filipino, Vietnamese, Chinese, Arabic, Japanese, Korean, & Laotian	Disability & Federal/State Language Communities	Virtual	
1/28/2022 5:30 PM to 7:30 PM	English, ASL, Spanish, Filipino, Vietnamese, Chinese, Arabic, Japanese, & Korean	General Public, Disability and Federal/State Language Communities	Virtual	Virtual due to increase in COVID-19 cases
2/3/2022 5:30 PM to 7:30 PM	English, ASL, Spanish, Filipino, Vietnamese, Chinese, Arabic, Japanese, & Korean	General Public, Disability and Federal/State Language Communities	Both	County Administration Center: 1600 Pacific Hwy, San Diego

Community Events

The list below represents targeted community events the Registrar's office plans to pursue in 2021 and 2022. Events will continually be added. If you would like to recommend an event, please email rovmail@sdcounty.ca.gov.

Tentative Community Engagements & Events October 20, 2021 – December 2022			
<u>Date</u>	<u>Event Name</u>	<u>City</u>	<u>Host Organization</u>
October 21, 2021	Southern Indian Health Conference	Alpine	Southern Indian Health/Viejas
November 3, 2021	Monthly Community Health	San Diego	Health and Resource Fair
November 13, 2021	Ride the Point 2021	San Diego	Point Loma Rotary Club
November 18, 2021	94th Aero Squadron Social	San Diego	Decentralized Autonomous Organization (DAO)
December 1, 2021	Christmas Celebration	San Diego	Chinese School of San Diego
December 1, 2021	Monthly Community Health	San Diego	Health and Resource Fair
December 18, 2021	Christmas Pow Wow by the Sea	Imperial Beach	Soaring Eagles
January – February, 2022	Chinese New Year Fair	San Diego	Taiwanese American Foundation of San Diego
January – February, 2022	SDCASEA Annual Celebration & Presentation	San Diego	San Diego Chinese American Science and Engineering
January – February, 2022	CEC Chinese New Year Celebration	San Diego	Chinese Evangelical Church of San Diego
January – February, 2022	Chinese New Year Fair	San Diego	San Diego Chinese Academy
January – February, 2022	CCC Chinese New Year Celebration	San Diego	Chinese Community Church
January 28 – 30, 2022	SD Lunar New Year Tet Festival	City Heights	Little Saigon San Diego
January 29, 2022	NCCS Chinese New Year Fair	San Diego	North County Chinese School
February 4 – 6, 2022	Tet Festival	Mira Mesa	Vietnamese American Youth Alliance
February 12 – 13, 2022	40th Annual San Diego Chinese New Year Fair	Downtown	Chinese Consolidated Benevolent Association of San Diego
April 1, 2022	Earth Fair	San Diego	EarthWorks
April 1, 2022	El Cajon Business District Car Show	El Cajon	El Cajon Business District
April 1, 2022	SDSU Pow Wow	San Diego	SDSU Native American Student Alliance
April 1, 2022	Linda Vista Multi-Cultural Fair & Parade	Linda Vista	Linda Vista Multi-Cultural Fair Inc.

Community Events (continued)

Tentative Community Engagements & Events October 20, 2021 – December 2022			
April 1, 2022	Black April Commemorate	San Diego	Vietnamese Community of San Diego
April 1, 2022	High School Voter Registration Weeks	San Diego	San Diego County School Districts
April 30, 2022	Fall of Saigon Commemorate	City Heights	Little Saigon San Diego
May 1, 2022	UCSD Pow Wow	La Jolla	UCSD Inter-Tribal Resource Center
May 1, 2022	Dragon Boat Festival	San Diego	San Diego Alliance for Asian Pacific Islander American
May 1, 2022	Asian Cultural Festival	Mira Mesa	Silk Road Production
May 1, 2022	D6 Night Market	Mira Mesa	Alliance for Quality Education
June 1, 2022	San Luis Rey Mission Inter-Tribal Pow Wow	Oceanside	San Luis Rey Band of Luiseno Mission Indians
June 1, 2022	San Diego County Fair	Del Mar	San Diego County Fair
June 1, 2022	San Diego Night Market	San Diego	San Diego Night Market
July 1, 2022	Pride Festival	San Diego	San Diego Pride
August 1, 2022	Barona Pow Wow	Lakeside	Barona Band of Mission Indians
August 1, 2022	National Night Out	San Diego	SDPD
September 1, 2022	Sycuan Pow Wow	El Cajon	Sycuan Band of the Kumeyaay Nation
September 1, 2022	High School Voter Registration Weeks	San Diego	San Diego County School Districts
September 1, 2022	Mid-Autumn Festival Celebration	Balboa Park	House of China
September 1, 2022	Adams Ave Street Fair	San Diego	Adams Ave Business Association
September 1, 2022	Mid-Autumn Festival	San Diego	Little Saigon San Diego
October 1, 2022	Balboa Park Pow Wow	San Diego	American Indian Health Center
October 1, 2022	Double Ten ROC National Day Celebration	San Diego	San Diego Chinese Cultural Association
October 1, 2022	Annual Mira Mesa Street Fair	Mira Mesa	Mira Mesa Town Council
TBD	Cuyamaca PowWow	El Cajon	Native American Student Alliance at Cuyamaca College

Community Partners

If you or your organization would like to partner with the San Diego County Registrar of Voters on vote center outreach and educations, please email us at rovmail@sdcounty.ca.gov.

Language Access Community Partners

- Asian Pacific Islander (API) Initiative
- Barona Band of Mission Indians
- California for Equal Rights (CFER) Foundation
- California State University San Marcos
- Casa Cornelia
- Chinese Evangelical Church (CEC San Diego)
- Chinese School of San Diego
- Council of Philippine American Originations, Inc (COPAO)
- Filipino Press
- Harvest Evangelical Church of San Diego
- Hoi Den Hung
- House of China
- Hung Su Viet San Diego
- Indian Voices
- Little Saigon San Diego
- Living Water Church
- Mira Mesa Chinese Baptist Church
- National Diversity Coalition
- National Federation of Filipino American Associations (NaFFAA) San Diego Chapter
- Native American Student Alliance Cuyamaca College
- North County Chinese School
- Pala Band of Mission Indians
- Rasih Citizenship Education Institute
- Rincon Band of Luiseño Indians
- San Diego Alliance for Asian Pacific Islander American
- San Diego American Indian Health Center
- San Diego Asian American for Equality
- San Diego Chinese Cultural Association
- San Diego Taiwanese Presbyterian Church
- San Luis Rey Band of Luiseno Mission Indians
- SDSU Native American Student Alliance
- SDSU Vietnamese Student Association

Language Access Community Partners (continued)

- Southern Indian Health Council
- Southwestern College
- Sycuan Band of the Kumeyaay Nation
- Taiwanese American Foundation of San Diego
- The Center San Diego
- The Filipino School
- UCSD Native American Student Alliance
- UCSD Vietnamese Student Association
- Unity for Progress (UniPro) Filipino American
- Van Lang Center
- Vietnamese American Voter Alliance
- Vietnamese Buddhist Youth Association – Southern California
- Vietnamese Community of San Diego
- We Say Mabuhay
- Wesley United Methodist Church

Sample Language Assistance Card (Draft Front/Back)



VOTER HELP CARD

LANGUAGE ASSISTANCE SERVICES							
The San Diego County Registrar of Voters provides language support in English, Spanish, Filipino, Vietnamese, Chinese, Arabic, Japanese, and Korean.							
 Speak	 Phone	 Ballots	 Election Materials	 Reference Ballots	 Outreach & Education	 Voter Registration	 Multilingual Website
Spanish	✓	✓	✓		✓	✓	✓
Filipino	✓	✓	✓		✓	✓	✓
Vietnamese	✓	✓	✓		✓	✓	✓
Chinese	✓	✓	✓		✓	✓	✓
Arabic	✓			✓ (select precinct ballots)	✓		
Japanese	✓			✓ (select precinct ballots)	✓		
Korean	✓			✓ (select precinct ballots)	✓		



VOTER HELP CARD

Call the Registrar of Voters if you:

- Have a complaint regarding a vote center or poll worker: **800-696-0136 or 858-565-5800 or TTY 800-735-7929**

Check [SDVOTE.com](https://www.sdvote.com) for:

- Your current voter registration
- Nearest vote center and ballot drop off locations
- Other election information

Call the California Secretary of State to report any illegal or fraudulent activity at or near the vote centers: **800-345-VOTE (8683)**

ACCESSIBILITY ASSISTANCE SERVICES



- Accessible voting machines to mark your ballot
- Curbside Voting
- Additional assistance upon request

For more information, please check in with Vote Center staff.

Disability Community Partners

- AARP California
- Braille Institute
- Deaf Community Services
- Disability Rights California
- In-Home Supportive Services (IHSS) Advisory Committee
- San Diego Center for the Blind
- San Diego Regional Center
- State Council on Developmental Disabilities

Political, Advocacy, and/or Professional Organizations

- Alliance San Diego
- Black American Political Association of California (BAPCA)
- Change Begins With Me
- Clairemont Tow Council
- Common Cause
- Moms Demand Action
- Next Gen America
- ACLU
- California Common Cause
- City Clerks
- City of San Diego, Immigrant Affairs
- Election Integrity Project (EIP)
- Engage San Diego
- ACCE: Alliance of Californians for Community Empowerment
- Independent Voter Project (IVP)
- Indivisible (Defending Our Future)
- League of Women Voters (San Diego/North County)
- Newcomers.org
- NAACP
- National Council of Negro Women
- Project High Hopes/Inspire 2 Vote
- Political Parties
 - San Diego County Democrat Party
 - The Republican Party of San Diego County
- Universities
 - University of California - San Diego
 - San Diego State University
 - University of San Diego
 - Point Loma Nazarene University
 - California State University San Marcos
- The San Diego LGBT Community Center (The Center)
- Veteranspreference.org
- Veterans Village of San Diego

Media Partners

If you or your organization would like to partner with the San Diego County Registrar of Voters on vote center outreach and education, please email us at rovmail@sdcounty.ca.gov. You will also be added to our news story distribution list.

Publication Name	Type
101.5 KGB (Classic Rock)	Radio
103.7 KSON (Country)	Radio
600 KOGO News Radio	Radio
97.3 The Fan	Radio
ABC 10news San Diego (KGTV)	Television
Alpine Sun	Newspaper
Beach & Bay Press	Newspaper
Carmel Valley News	Newspaper
CBS News 8 (KFMB-TV)	Television
Channel 93.3 (Contemporary Hits)	Radio
Coronado Eagle & Journal	Newspaper
Del Mar Times	Newspaper
East County Californian	Newspaper
East County Gazette	Newspaper
Encinitas Coast News	Newspaper
Escondido Times-Advocate	Newspaper
Fallbrook-Bonsall Village News	Newspaper
FOX 5 (KSWB-TV)	Television
GOD Radio	Radio
Imperial Beach Eagle & Times	Newspaper
Indian Voices	Newspaper
inewssource	Digital
KPBS/NPR	Public Radio/Digital
KUSI News	Television
KYXY 96.5 (Adult Contemporary)	Radio
La Jolla Light	Newspaper
La Jolla Village News	Newspaper
La Mesa Courier	Newspaper
Military Press	Newspaper
NBC 7 San Diego (KSND)	Television
Pala Rez	Radio
Patch	Digital

Publication Name	Type
Pomerado Newspaper	Newspaper
Poway News Chieftain	Newspaper
Presidio Sentinel	Newspaper
Ramona Sentinel	Newspaper
Rancho Bernardo News Journal	Newspaper
Rancho Santa Fe Review	Newspaper
San Diego Downtown News	Newspaper
San Diego Metropolitan Magazine	Magazine
San Diego Uptown News	Newspaper
San Marcos Paper	Newspaper
Solana Beach Sun	Newspaper
Sunny 98.1 (KXSN Classic Hits)	Radio
The Coast News	Newspaper
The Inland Edition	Newspaper
The San Diego Union Tribune	Newspaper/Digital
Times of San Diego	Digital
Total Traffic & Weather Network	Radio
Valley Roadrunner	Newspaper
Voice & Viewpoint	Newspaper
Voice of San Diego	Digital

Language Media Partners

Language	Vendor
Chinese	Epoch Times (San Diego Region-Chinese)
Chinese	San Diego Chinese Tribune
Chinese	WE Monthly
Filipino	Filipino Press
Filipino	San Diego Asian Journal
Filipino	Phillipine & Asian Report
Filipino	Radyo Filipino Amerika
Spanish	Univisión San Diego
Spanish	El Latino
Spanish	Voces Hispanas
Spanish	Radio Latina
Spanish	La Poderosa
Spanish	Telemundo 20 San Diego
Spanish	The San Diego Union Tribune (en Español)
Spanish	Entravision
Spanish	Televisa
Spanish	Frontera
Spanish	Qué Buena 106.5
Spanish	KLGW (Spanish Adult Contemporary)
Vietnamese	Nguoi Viet Tu Do
Vietnamese	Nguoi Viet Today
Vietnamese	Saigon Nho
Vietnamese	Tienq Viet
Vietnamese	Tieng Nuoc Toi Radio

Sample of Outdoor Voter Educational Poster Locations

The following outdoor poster locations were utilized for the September 14, 2021 California Gubernatorial Recall Election and are being provided as an example.

#	Location Name	Address	City	State	Zip
1	Fallbrook Shell 1	936 E Mission Rd	Fallbrook	CA	92028
2	Barnicles Express	845 E Vista Way	Vista	CA	92084
3	Oceana Union	502 S El Camino Real	Oceanside	CA	92058
4	Liberty Oil Inc	1943 S Coast Hwy	Oceanside	CA	92054
5	Carlsbad 76	945 Tamarack Ave	Carlsbad	CA	92008
6	Alta Dena Drive Thru Dairy	6426 Mount Ada Rd	San Diego	CA	92111
7	Clairemont Shell	2606 Clairemont Dr	San Diego	CA	92117
8	LA Jolla Chevron	7475 LA Jolla Blvd	La Jolla	CA	92037
9	California Super Gas #2	1885 Garnett Ave	San Diego	CA	92109
10	Crown Point	3804 Ingraham St	San Diego	CA	92109
11	Sunset Gas & Market	4792 Point Loma Ave	San Diego	CA	92107
12	Ocean Beach Shell	4794 Voltaire St	San Diego	CA	92107
13	Shamoun Shell	1145 S 28th St	San Diego	CA	92113
14	V & D Market	2193 Ocean View Blvd	San Diego	CA	92113
15	JR Gas & Mini Mart	505 S 30th St	San Diego	CA	92113
16	Big B Market	1540 Coolidge Ave	National City	CA	91950
17	National City Market	240 E 18th St	National City	CA	91950
18	Gas Depot Station	199 Broadway	Chula Vista	CA	91910
19	Supreme Gasoline	196 Broadway	Chula Vista	CA	91910
20	Market & Gas	600 F St	Chula Vista	CA	91910
21	J Street Gas	701 Broadway	Chula Vista	CA	91910
22	Valero	873 Palomar St	Chula Vista	CA	91911
23	Leon's Market	185 Palm Ave	Imperial Beach	CA	91932
24	NEIGHBORS MARKET	1492 13Th St	Imperial Beach	CA	91932
25	Coronado Shell	1102 Hollister St	San Diego	CA	92154
26	Del Sol Arco	3724 Del Sol Blvd	San Diego	CA	92108
27	St Clair Enterprises Valero	301 E San Ysidro Blvd	San Ysidro	CA	92173
28	Otay 76 Truck Stop & 7-11	2535 Otay Center Dr	San Diego	CA	92154
29	Bonita Vista Auto & Gas	903 Otay Lakes Rd	Chula Vista	CA	91913
30	ARCO	501 Telegraph Canyon Rd	Chula Vista	CA	91910
31	Bel Air Market	4473 Logan Ave	San Diego	CA	92113

#	Location Name	Address	City	State	Zip
32	Broadway 76	7180 Broadway	Lemon Grove	CA	91945
33	US Gas Inc	3520 Sweetwater Springs Blvd	Spring Valley	CA	91977
34	Quicik Korner Gas Station	9663 Campo Rd	Spring Valley	CA	91977
35	Basaka Petroleum Co	9111 Campo Rd	Spring Valley	CA	91977
36	Ramco Petroleum #7	2410 Fletcher Pkwy	El Cajon	CA	92020
37	Emerald Oil	5600 Baltimore Dr	La Mesa	CA	91942
38	Sabre Springs Arco	12610 Sabre Springs Pkwy	San Diego	CA	92128
39	California Super #1	510 W 5th Ave	Escondido	CA	92025
40	El Mexicano Market & Liquor	602 S Escondido Blvd	Escondido	CA	92025
41	Ronco Gas	1158 E Washington Ave	Escondido	CA	92025
42	Kwik Stop	1140 E Mission Ave	Escondido	CA	92025
43	Ramco Petroleum #2	30351 SR-78	Santa Ysabel	CA	92070
44	Ramco Petroleum	1913 Main St	Julian	CA	92036
45	Speedy Mart	1791 N 2nd St	El Cajon	CA	92021
46	Sky Fuel	1699 E Main St	El Cajon	CA	92021
47	Greenfield Mobil	1761 Greenfield Dr	El Cajon	CA	92021
48	Eagle Gas	8445 Los Coches Rd	El Cajon	CA	92021
49	Alpine Gas	2232 Alpine Blvd	Alpine	CA	91901
50	Jacumba Chevron	1491 Carrizo Gorge Rd	Jacumba	CA	91934
51	Jacumba Shell	1494 Carrizo Gorge Rd	Jacumba	CA	91934
52	Coronado Island Shell	900 Orange Ave	Coronado	CA	92118
53	Bonita Shell	2401 E Division St	National City	CA	91950
54	Mission Gorge Ultramar	6011 Mission Gorge Rd	San Diego	CA	92120
55	California Finest Oil	10821 Tierra Santa Blvd	San Diego	CA	92124
56	Chevron	236 N El Camino Real	Encinitas	CA	92024
57	Sweetwater Gas	2835 Sweetwater Rd	Spring Valley	CA	91977
58	College Arco	5111 College Ave	San Diego	CA	92115
59	University Produce Food Market	4950 University Ave	San Diego	CA	92105
60	Pw Mart	12906 Pomerado Rd	Poway	CA	92064

Public Input Overview

Voter Accessibility Advisory Committee (VAAC)

The Voting Accessibility Advisory Committee meets to consider the needs of voters with disabilities pertaining to vote centers and voting by mail. This committee meets the statutory requirements of the Voter Accessibility Advisory Committee.

Name	Organization
Members	
Paul Spencer	Disability Rights California
Jacqueline Jackson	IHSS Advisory Committee
Michelle Krug	Community Member
Connie Soucy	Community Member
David Stotland	Community Member/County Rep
Karie Lew	Disability Rights California/Alternate Member
Gabriel Tayler	Disability Rights California/Alternate Member
Allie Rice	DD/Deaf Community Services of San Diego/Alternate Member
County Staff	
Andrew McDonald	Chair
Shawn Brom	Co-Chair
Rosie Rascon	Staff
Erin Mayer	Staff
David Nickel	Staff
Laura Kelly	Staff
Diane Garcia	Staff
Participants	
Kim Gibbens	CEO/San Diego Center for the Blind
Dennis Smith	CDO/San Diego Center for the Blind
Paul Mansell	San Diego Regional Center
Debbie Marshall	State Council/Developmental Disabilities
Anna Sanger	Speech Pathologist
Lorna de los Santos	AARP

2022 VAAC Meeting Schedule		2021 VAAC Meeting Schedule	
April 25, 2022	(Virtual Meeting)	January 25, 2021	(Virtual Meeting)
July 25, 2022	(Virtual Meeting)	April 26, 2021	(Virtual Meeting)
October 3, 2022	(Virtual Meeting)	July 26, 2021	(Virtual Meeting)
		October 4, 2021	(Virtual Meeting)
		December 6, 2021	(Virtual Meeting)



VOTER ACCESSIBILITY ADVISORY COMMITTEE (VAAC)

A G E N D A

December 6, 2021

2:00 p.m. – 3:30 p.m.

- | | |
|--|----------------------|
| I. Introductions | All |
| II. Voters Choice Act 2022 | Cynthia |
| a. Election Administration Plan | |
| b. Consultation Meetings/Public Hearing | |
| c. Website | |
| III. Vote Centers 2022 | Shawn |
| a. Community Workshops | |
| b. Accessibility | |
| IV. Outreach & Community Engagement | Shawn/Cynthia |
| V. Open Forum | All |

Future Meetings (2:00 p.m. – 3:00 p.m.):

- **April 25, 2022** (Zoom Meeting)
- **July 25, 2022** (Zoom Meeting)
- **October 3, 2022** (Zoom Meeting)

Note: A Voters Choice Act Public Consultation Meeting targeting accessibility and persons with disabilities is scheduled for January 24, 2022 (time to be determined)

Zoom Meeting Instructions:

- Will be provided

Language Accessibility Advisory Committees (LAAC)

The LAAC, an independent committee meets to consider the needs of language minority communities pertaining to vote centers and all mail-ballot elections.

This committee meets the statutory requirements of the Languages Accessibility Advisory Committees.

Members	Organization	Language
Winnie Davis	San Diego Taiwanese Presbyterian Church	Chinese
Pastor Michael Lock	Mira Mesa Chinese Baptist Church	Chinese
David Seid	House of China	Chinese
Joanna Wang	Epoch Times- Media	Chinese
Myrna F. Reyes	National Federation of Filipino American Association (NaFFAA), Bilingual Poll Worker	Filipino
Salvador "Sal" B. Flor	Council of Philippine American Organization, Inc. (COPAO)	Filipino
Ramulo "Ram" Sarno	House of the Philippines (HOP)	Filipino
Dr. Vangie Meneses	Community Advocate - COPAO	Filipino
Dr. Aurora S. Cudal-Rivera	Community Advocate - NaFFAA, COPAO	Filipino
Andrew J. Amorao	Kuya Ate Mentorship Program-San Diego (KAMP SD), NaFFAA	Filipino
Joe Mazarez	Council of Philippine American Organization, Inc. (COPAO)	Filipino
Angelito "Chito" Saavedra	Filipino Bilingual Poll Worker	Filipino
Arnoldo Coronado, PE (MX)	Bilingual Site Manager	Spanish
Veronica Ferguson, CPAC	Community Member	Spanish
Ray DaSilva, MS, MBA	ICOHS College & Bilingual Site Manager	Spanish
Anamaria Flores, MA	MECHA & Sweetwater Union High School District	Spanish
Connie Miller, LTSO	Community Member	Spanish
Angel Godinez	Homeless Community Advocate & Former Spanish Lang. Services EW	Spanish
Arcelia Nunez	Universidad Popular	Spanish
Maryzella Juarez	Rotary	Spanish
Guadalupe Corona, Ed.D.	Southwestern College	Spanish
Joe Long	Vietnamese American Voter Alliance	Vietnamese
Khoi Nguyen	Bilingual Poll Worker	Vietnamese
Minh Hieu Pham Vu	Community Member	Vietnamese
Buu Van Rasih	Rasih Citizenship Institute	Vietnamese
Tram Lam	Little Saigon San Diego	Vietnamese

LAAC Meeting Agenda (Sample)



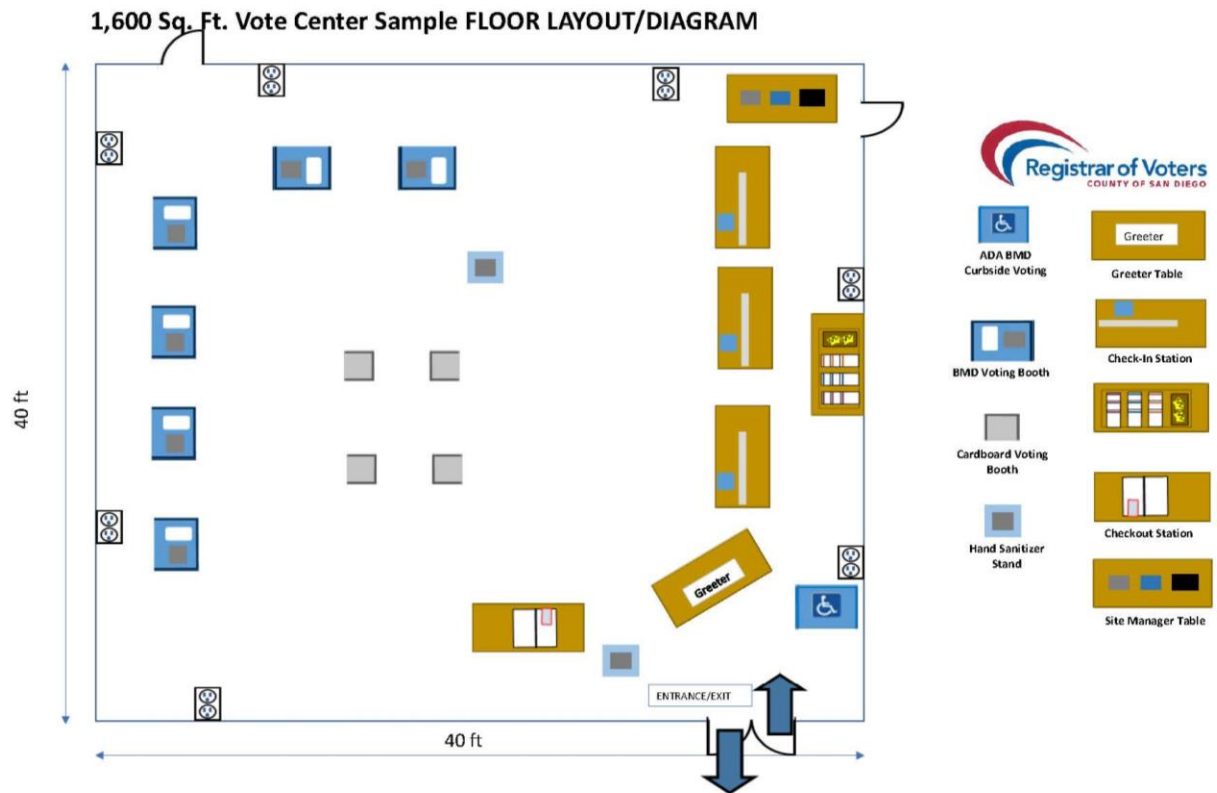
Language Accessibility Advisory Committee - LAAC

MEETING AGENDA

December 8, 2021

- | | | |
|-------------|---|---|
| I. | Welcome and Introductions | Shawn Brom |
| II. | Voter's Choice Act 2022
Election Administration Plan
Consultations Meetings/Public Hearing
Voting Options | Cynthia Paes |
| III. | Siting Information
Vote Centers
Ballot Drop Box Locations
Outreach | Shawn Brom |
| IV. | Community Outreach and Education
Registration Trends
Election Results
Workshops
Outreach Events | Language Outreach
Coordinators |
| V. | Open Forum | All |

Vote Center Layout (Sample)



List of Vote Centers and Ballot Drop Box Locations

The vote center and ballot drop box selection process is currently underway. The tables below do not constitute a complete list. The county will provide a minimum of 195 vote center and 130 ballot drop box locations across the county and we anticipate providing more than the minimum.

The final list of locations will be posted on the Registrar's website under [Election Information](#) once finalized.

A complete list of locations will also be provided in the Voter Information Pamphlet.

Proposed Vote Centers (list is not complete/selection process still underway)

Select Vote Centers will be open May 28 - June 6, 8:00 am to 5:00 pm

All Voter Centers will be open June 4 – June 6, 8:00 am to 5:00 pm

All Vote Center will be open Election Day, June 7, 7:00 am to 8:00 pm

Facility	Address	Days
ALPINE - 91901		
ALPINE ELEMENTARY SCHOOL-AUDITORIUM	1850 ALPINE BLVD	June 4 to June 7
BONITA - 91902		
SUNNYSIDE ELEMENTARY SCHOOL-MPR	5430 SAN MIGUEL RD	June 4 to June 7
BONSALL - 92003		
BONSALL COMMUNITY CTR-MAIN RM	31505 OLD RIVER RD	May 28 to June 7
BORREGO SPRINGS - 92004		
BORREGO SPRINGS HIGH SCHOOL-GYM	2281 DIEGUENO RD	June 4 to June 7
BOULEVARD - 91905		
BACK COUNTRY RESOURCE CENTER	39919 RIBBONWOOD RD	May 28 to June 7
CAMPO - 91906		
MOUNTAIN HEALTH COMM CTR-MAIN HALL	976 SHERIDAN RD	June 4 to June 7
CARDIFF BY THE SEA - 92007		
ADA W HARRIS ELEM SCHOOL-MPR	1508 WINDSOR RD	June 4 to June 7
CARLSBAD - 92008		
CARLSBAD HIGH SCHOOL-CUSTODIAN RM	3557 MONROE ST	June 4 to June 7

Facility	Address	Days
CARLSBAD - 92009		
EL CAMINO CREEK SCHOOL-AUDITORIUM	7885 PASEO ALISO	June 4 to June 7
CARLSBAD - 92010		
CALAVERA HILLS MIDDLE SCHOOL-GYM	4100 TAMARACK AVE	June 4 to June 7
CARLSBAD - 92011		
AVIARA OAKS ELEM SCHOOL-AUDITORIUM	6900 AMBROSIA LN	June 4 to June 7
CHULA VISTA - 91910		
BONITA VISTA MIDDLE SCHOOL-CAFETERIA	650 OTAY LAKES RD	June 4 to June 7
CHULA VISTA CITY HALL	276 4TH AVE	June 4 to June 7
CLEAR VIEW ELEMENTARY SCHOOL-AUDITORIUM	455 WINDROSE WAY	June 4 to June 7
HILLTOP HIGH SCHOOL-CAFETERIA	555 CLAIRE AVE	June 4 to June 7
SOUTHWESTERN COMM CLG-WEST STUDENT UNION	900 OTAY LAKES RD, LOT A	May 28 to June 7
CHULA VISTA - 91911		
BAY VIEW BAPTIST CHURCH	210 JAMUL AVE	June 4 to June 7
FRED H ROHR ELEM SCHOOL-CAFETERIA	1540 MALTA AVE	June 4 to June 7
SHADOW MTN COMM CHR-FIRESIDE RM	960 5TH AVE	June 4 to June 7
CHULA VISTA - 91913		
EASTLAKE ELEM SCHOOL-AUDITORIUM	1955 HILLSIDE DR	June 4 to June 7
HEDENKAMP ELEM SCHOOL-MPR HALF	930 E PALOMAR ST	June 4 to June 7
MC MILLIN, CORKY SCHOOL-AUDITORIUM	1201 SANTA CORA AVE	June 4 to June 7
OTAY RANCH HIGH SCHL-LIBRARY	1250 OLYMPIC PKWY	June 4 to June 7
CHULA VISTA - 91914		
EASTLAKE MIDDLE SCHOOL-LIBRARY	900 DUNCAN RANCH RD	June 4 to June 7
CHULA VISTA - 91915		
CAMARENA, ENRIQUE S ELEM SCHOOL-RM 704	1650 EXPLORATION FLS DR, USE WINDINGWALK	June 4 to June 7
EASTLAKE HIGH SCHOOL-ROOM 1604	1120 EASTLAKE PKWY, MAIN ENTRANCE	June 4 to June 7

Facility	Address	Days
CORONADO - 92118		
CITY OF CORONADO - COMM CTR-ABALONE RM	1845 STRAND WAY	May 28 to June 7
DESCANSO - 91916		
OUR LADY OF LIGHT CATHOLIC CHR	9136 RIVERSIDE DR	June 4 to June 7
EL CAJON - 92019		
EL CAJON ELKS LODGE #1812 - MEETING RM	1400 E WASHINGTON AVE	June 4 to June 7
KENNEDY REC CENTER-MEETING RM	1675 E MADISON AVE	May 28 to June 7
RANCHO SAN DIEGO ELEM SCHOOL-MPR	12151 CALLE ALBARA	June 4 to June 7
EL CAJON - 92021		
CREST COMMUNITY CLUBHOUSE	113 NORTH PARK DR	June 4 to June 7
LOS COCHES CREEK MIDDLE SCHOOL-DRAMA RM	9669 DUNBAR LN	June 4 to June 7
MAGNOLIA ELEM SCHOOL-AUDITORIUM	650 GREENFIELD DR	June 4 to June 7
NARANCA ELEM SCHOOL-MPR	1030 NARANCA AVE	June 4 to June 7
W D HALL ELEM SCHOOL-AUDITORIUM	1376 PEPPER DR	June 4 to June 7
WELLS PARK	1153 E MADISON AVE	May 28 to June 7
ENCINITAS - 92024		
ENCINITAS COMMUNITY CENTER-MAPLE RM	1140 OAKCREST PARK DR	June 4 to June 7
OLIVENHAIN MUNICIPAL WATER DISTRICT	1966 OLIVENHAIN RD	June 4 to June 7
PAUL ECKE CENTRAL SCHOOL-MPR	185 UNION ST	June 4 to June 7
ESCONDIDO - 92025		
CENTRAL ELEM SCHOOL-AUDITORIUM	122 W 4TH AVE	June 4 to June 7
PARK AVENUE COMMUNITY CENTER-OAK RM	728 N BROADWAY	June 4 to June 7
WESTFIELD NORTH COUNTY - COMMUNITY ROOM	272 E VIA RANCHO PKWY	May 28 to June 7
ESCONDIDO - 92026		
REIDY CREEK ELEM SCHOOL-MPR	2869 N BROADWAY	June 4 to June 7
ROCK SPRINGS ELEM SCHOOL-AUDITORIUM	1155 DEODAR RD	June 4 to June 7
ESCONDIDO - 92027		
COMMUNITY LUTHERAN CHURCH	3575 E VALLEY PKWY	May 28 to June 7
CONWAY ELEM SCHOOL-MPR	1325 CONWAY DR	June 4 to June 7
EAST VALLEY COMMUNITY CTR - VINEYARD RM	2245 E VALLEY PKWY	June 4 to June 7

Facility	Address	Days
ESCONDIDO – 92027 (cont.)		
OAK HILL ELEM SCHOOL-MPR	1820 OAK HILL DR	June 4 to June 7
ESCONDIDO - 92029		
DEL LAGO ACADEMY-DANCE RM B203	1740 SCENIC TRAILS WAY	June 4 to June 7
FALLBROOK - 92028		
FALLBROOK COMMUNITY CTR-AUDITORIUM	341 HEALD LN	May 28 to June 7
FALLBROOK HIGH SCHOOL-GYM	2400 S STAGE COACH LN	June 4 to June 7
FALLBROOK UN ELEM OFFCE-RM 6 PROF DEV RM	321 IOWA ST	June 4 to June 7
IMPERIAL BEACH - 91932		
SBUSD ED CENTER-BURRESS AUDITORIUM	601 ELM AVE	May 28 to June 7
JAMUL - 91935		
DEERHORN VALLEY FIRE STATION #37	2383 HONEY SPRINGS RD	June 4 to June 7
JAMUL COMMUNITY CHR OFFICE-CHAPEL	14866 LYONS VALLEY RD	May 28 to June 7
JULIAN - 92036		
JULIAN TOWN HALL - DOWNSTAIRS	2129 MAIN ST	May 28 to June 7
LA JOLLA - 92037		
MUIRLANDS MIDDLE SCHOOL-AUDITORIUM	1056 NAUTILUS ST	June 4 to June 7
LA MESA - 91942		
MARYLAND AVENUE ELEM SCHOOL-AUDITORIUM	5400 MARYLAND AVE	June 4 to June 7
PARKWAY MIDDLE SCHOOL-MPR	9009 PARK PLAZA DR	June 4 to June 7
UNITED CHURCH OF CHRIST OF LA MESA-HALL	5940 KELTON AVE	June 4 to June 7
LAKESIDE - 92040		
EL CAPITAN HIGH SCHOOL-EVENT CENTER	10410 ASHWOOD ST	June 4 to June 7
LAKESIDE COMMUNITY CENTER-MEYER HALL	9841 VINE ST	June 4 to June 7
SANTEE-LAKESIDE ELKS LODGE	11633 WOODSIDE AVE	June 4 to June 7
NATIONAL CITY - 91950		
CAMACHO RECREATION CENTER - GYM	1810 E 22ND ST	May 28 to June 7
EL TOYON RECREATION CTR-CLASSRM	2005 E 4TH ST	June 4 to June 7

Facility	Address	Days
OCEANSIDE - 92054		
LINCOLN MIDDLE SCHOOL-MPR	2000 CALIFORNIA ST	June 4 to June 7
OCEANSIDE COUNTRY CLUB SR CTR-RM G & H	455 COUNTRY CLUB LN	June 4 to June 7
WOMENS CLUB OF OCEANSIDE	1606 MISSOURI AVE	May 28 to June 7
OCEANSIDE - 92056		
EL CORAZON SENIOR CENTER - CLASSROOMS	3302 SENIOR CENTER DR	May 28 to June 7
TEMPLE HEIGHTS ELEM SCHOOL-MPR	1550 TEMPLE HEIGHTS DR	June 4 to June 7
OCEANSIDE - 92057		
KNIGHTS OF COLUMBUS-HALL/SAN LUIS REY	4070 MISSION AVE	June 4 to June 7
LIBBY ELEMENTARY SCHOOL-MPR	423 W REDONDO DR	June 4 to June 7
MARTIN L KING JR MID SCHOOL-MPR	1290 IVEY RANCH RD	June 4 to June 7
MELBA BISHOP REC CTR-GYM	5306 NORTH RIVER RD	June 4 to June 7
MISSION VISTA HIGH SCHOOL - THEATER	1306 MELROSE DR	June 4 to June 7
ROOSEVELT MIDDLE SCHOOL-MPR	850 SAGEWOOD DR	June 4 to June 7
OCEANSIDE - 92058		
JOE BALDERRAMA COMMUNITY CENTER	709 SAN DIEGO ST	June 4 to June 7
OCEANSIDE UNIFIED SCH DIST-BOARD ROOM	2111 MISSION AVE	June 4 to June 7
PALA - 92059		
PALA TRIBAL COMMUNITY HALL-OLD HALL	35955 PALA TEMECULA RD	June 4 to June 7
PINE VALLEY - 91962		
MOUNTAIN EMPIRE HIGH SCHOOL-GYM	3305 BUCKMAN SPRINGS RD	June 4 to June 7
PINE VALLEY COMMUNITY CLUBHOUSE	28890 OLD HWY 80	May 28 to June 7
POTRERO - 91963		
POTRERO COMMUNITY CENTER-MAIN HALL	24550 HWY 94	June 4 to June 7
POWAY - 92064		
MICKEY CAFAGNA COMM CTR-WILLOW RM	13094 CIVIC CENTER DR	June 4 to June 7
MIDLAND ELEMENTARY SCHOOL-MPR	13910 MIDLAND RD	June 4 to June 7
POMERADO ELEM SCH-MPR	12321 9TH ST	June 4 to June 7
POWAY HIGH SCHOOL-K1	15500 ESPOLA RD	June 4 to June 7

Facility	Address	Days
RAMONA - 92065		
RAMONA COMM CTR-MULTI PURPOSE RM	434 AQUA LN	May 28 to June 7
RAMONA SOUTHERN BAPTIST CHURCH	838 HANSON LN	June 4 to June 7
RAMONA UNIFIED SCH DIST - WILSON GYM	720 9TH ST	June 4 to June 7
RANCHO SANTA FE - 92067		
R ROGER ROWE SCHOOL-GYM	5927 LA GRANADA	June 4 to June 7
SAN DIEGO - 92101		
DOWNTOWN WORKS	550 W B ST	May 28 to June 7
WASHINGTON ELEM SCHOOL-AUDITORIUM	1789 STATE ST	June 4 to June 7
SAN DIEGO - 92102		
GOLDEN HILL RECREATION CTR-GYM	2600 GOLF COURSE DR	June 4 to June 7
HORTON ELEM SCHOOL-AUDITORIUM	5050 GUYMON ST	June 4 to June 7
SAN DIEGO - 92103		
SAN DIEGO LGBT COMMUNITY CENTER	3909 CENTRE ST	June 4 to June 7
SPRECKELS MASONIC TEMPLE - DINING HALL	3858 FRONT ST	June 4 to June 7
SAN DIEGO - 92104		
NORTH PARK RECREATION CENTER-MPR 1	4044 IDAHO ST	June 4 to June 7
ST PATRICKS CATHOLIC PARISH - REAR HALL	3585 30TH ST	June 4 to June 7
SAN DIEGO - 92105		
MID CITY COMMUNITY-GYMNASIUM	4302 LANDIS ST	May 28 to June 7
OAK PARK ELEM SCHOOL-AUDITORIUM	2606 54TH ST, USE MAPLE ST	June 4 to June 7
WILSON MIDDLE SCHOOL-AUDITORIUM	3838 ORANGE AVE	June 4 to June 7
SAN DIEGO - 92107		
CORREIA MIDDLE SCHOOL-AUDITORIUM FOYER	4302 VALETA ST	June 4 to June 7
DANA MID SCHOOL-CAFETERIA	1775 CHATSWORTH BLVD	June 4 to June 7
OCEAN BEACH REC CTR - GYM	4726 SANTA MONICA AVE	June 4 to June 7
SAN DIEGO - 92109		
DOWNTOWN WORKS	4438 INGRAHAM ST	May 28 to June 7
PACIFIC BEACH RECREATION CENTER-CRAFT RM	1405 DIAMOND ST	June 4 to June 7

Facility	Address	Days
SAN DIEGO - 92110		
FATHER JUNIPERO SERRA HALL	2540 SAN DIEGO AVE	June 4 to June 7
USD- DEGHERI ALUMNI CTR RM 113	5998 ALCALA PARK	May 28 to June 7
SAN DIEGO - 92111		
CARSON ELEM SCHOOL-AUDITORIUM	6905 KRAMER ST	June 4 to June 7
CLAIREMONT COVENANT CHR-FELLOWSHIP HALL	5255 MT ARARAT DR	June 4 to June 7
ISLAMIC CENTER OF SAN DIEGO - MPR	7050 ECKSTROM AVE	June 4 to June 7
KEARNY MESA REC CTR-MEETING ROOM	3170 ARMSTRONG ST	June 4 to June 7
LINDA VISTA PRESBYTERIAN CHURCH - HALL	2130 ULRIC ST	June 4 to June 7
SAN DIEGO - 92113		
MOUNTAIN VIEW COMM CTR-BACK MEETING RM	641 S BOUNDARY ST	June 4 to June 7
NEW HOPE BAPTIST CHURCH HALL	2205 HARRISON AVE	June 4 to June 7
SAN DIEGO - 92114		
AUDUBON SCHOOL-AUDITORIUM	8111 SAN VICENTE ST	June 4 to June 7
BAYVIEW BAPTIST CHURCH-AUDITORIUM	6134 PASTOR TIMOTHY J WINTERS ST	June 4 to June 7
ENCANTO RECREATION CTR-MEETING RM	6508 WUNDERLIN AVE	June 4 to June 7
FULTON ELEMENTARY SCHOOL-AUDITORIUM	7055 SKYLINE DR	June 4 to June 7
SAN DIEGO - 92115		
CRAWFORD HIGH SCHOOL-CAFETERIA	5600 SPARTAN DR	June 4 to June 7
HOOVER HIGH SCHOOL-AUDITORIUM STAGE	4474 EL CAJON BLVD	June 4 to June 7
SAN DIEGO - 92117		
ALCOTT ELEM SCHOOL-AUDITORIUM	4680 HIDALGO AVE	June 4 to June 7
NORTH CLAIREMONT REC CTR - GYM	4421 BANNOCK AVE	June 4 to June 7
SEQUOIA ELEM SCHOOL-AUDITORIUM	4690 LIMERICK AVE	June 4 to June 7
SOUTH CLAIREMONT REC CTR-CRAFT RM	3605 CLAIREMONT DR	June 4 to June 7
SAN DIEGO - 92119		
SAN CARLOS REC CENTER-SAN CARLOS ROOM	6445 LAKE BADIN AVE	June 4 to June 7
SAN DIEGO - 92120		
ALLIED GARDENS REC CENTER-GYM	5155 GREENBRIER AVE	June 4 to June 7
FOSTER ELEM SCHOOL-AUDITORIUM	6550 51ST ST	June 4 to June 7

Facility	Address	Days
SAN DIEGO – 92120 (cont.)		
MISSION TRAILS CHURCH-FELLOWSHIP HALL	4880 ZION AVE	June 4 to June 7
SAN DIEGO - 92122		
DOYLE RECREATION CENTER-GYM	8175 REGENTS RD	June 4 to June 7
STANDLEY PARK & REC CTR - CRAFT RM	3585 GOVERNOR DR	June 4 to June 7
SAN DIEGO - 92123		
SERRA MESA REC CENTER-GYM	9020 VILLAGE GLEN DR	June 4 to June 7
SAN DIEGO - 92124		
TIERRASANTA REC CENTER-MEETING RM 2 & 3	11220 CLAIREMONT MESA BLVD	June 4 to June 7
SAN DIEGO - 92126		
CHALLENGER MID SCHOOL-AUDITORIUM	10810 PARKDALE AVE	June 4 to June 7
HAGE ELEM SCHOOL-AUDITORIUM	9750 GALVIN AVE	June 4 to June 7
MIRA MESA REC CTR-GAME RM	8575 NEW SALEM ST	June 4 to June 7
SAN DIEGO MIRAMAR COLLEGE-ROOM H-103	10440 BLACK MOUNTAIN RD	June 4 to June 7
SAN DIEGO - 92127		
RANCHO BERNARDO REC CENTER-MEETING RM	18448 W BERNARDO DR	June 4 to June 7
TURTLEBACK ELEMENTARY SCHOOL-MPR	15855 TURTLEBACK RD	June 4 to June 7
SAN DIEGO - 92128		
CARMEL MOUNTAIN RANCH REC CTR-MPR RM 103	10152 RANCHO CARMEL DR	May 28 to June 7
HOPE UNITED METHODIST CHR-COVENANT HL 4	16550 BERNARDO HEIGHTS PKWY	June 4 to June 7
SAN DIEGO - 92129		
CANYON VIEW ELEM SCHOOL-MPR	9225 ADOLPHIA ST	June 4 to June 7
HILLTOP COMMUNITY PARK-MPR	9711 OVIEDO WAY	June 4 to June 7
WESTVIEW HIGH SCHOOL-DANCE ROOM	13500 CAMINO DEL SUR	June 4 to June 7
SAN DIEGO - 92130		
CARMEL VALLEY REC CENTER - MPR RM 1	3777 TOWNSGATE DR	June 4 to June 7
OCEAN AIR RECREATION CTR-ACTIVITY RM 100	4770 FAIRPORT WAY	June 4 to June 7
PACIFIC HIGHLANDS RNCH REC CTR-MPR NORTH	5977 VILLAGE CENTER LOOP RD	May 28 to June 7

Facility	Address	Days
SAN DIEGO – 92130 (cont.)		
ST THERESE OF CARMEL CATHOLIC CHURCH	4355 DEL MAR TRAILS RD	June 4 to June 7
SAN DIEGO - 92131		
DINGEMAN ELEM SCH-AUDITORIUM	11840 SCRIPPS CREEK DR	June 4 to June 7
ELLEN BROWNING SCRIPPS ELEM-MPR	11778 CYPRESS CANYON RD	June 4 to June 7
SAN DIEGO - 92139		
CENTRO FAMILIAR CRISTIANO-RM 5	5901 RANCHO HILLS DR	June 4 to June 7
HILLSBOROUGH RECREATION CENTER	1208 MANZANA WAY	June 4 to June 7
PENN ATHLETIC FIELD-MEETING RM	2555 DUSK DR	June 4 to June 7
SAN DIEGO - 92154		
JUAREZ-LINCOLN ELEM SCHOOL-MPR	849 TWINING AVE	June 4 to June 7
MONTGOMERY WALLER REC CTR - GYM	3020 CORONADO AVE	June 4 to June 7
NESTOR UNITED METHODIST CHR-FELLOWSHIP	2205 FLOWER AVE	June 4 to June 7
ROBERT EGGER REC CTR - GYM	1885 CORONADO AVE	June 4 to June 7
SAN YSIDRO HIGH SCHL-PERF ARTS CTR FOYER	5353 AIRWAY RD	June 4 to June 7
SAN DIEGO - 92182		
SDSU VIEJAS ARENA - TUNNEL	5500 CANYON CREST DR, PARKING 13	May 28 to June 7
SAN MARCOS - 92069		
SAN MARCOS COMMUNITY CENTER-MAIN HALL	3 CIVIC CENTER DR	June 4 to June 7
WALNUT GROVE PARK RED BARN	1950 SYCAMORE DR	June 4 to June 7
SAN MARCOS - 92078		
CSU SAN MARCOS-VIASAT ENGR PAVILLON 5101	333 S TWIN OAKS VALLEY RD, LOT F	June 4 to June 7
SAN ELIJO REC CTR-TERRACE RM	1105 ELFIN FOREST RD E	June 4 to June 7
SAN YSIDRO - 92173		
COLONEL IRVING SALOMON COMM CTR - GYM	179 DIZA RD	May 28 to June 7
SANTA YSABEL - 92070		
SANTA YSABEL NATURE CENTER-COMMUNITY RM	22135 HWY 79	June 4 to June 7

Facility	Address	Days
SANTEE - 92071		
CAJON PARK SCHOOL-MPR	10300 N MAGNOLIA AVE	June 4 to June 7
PRIDE ACADEMY AT PROSPECT AVE-LRC	9303 PROSPECT AVE	June 4 to June 7
SUMMIT UNITARIAN UNIVERSALIST FELLOWSHIP	8778 COTTONWOOD AVE	June 4 to June 7
SYCAMORE CANYON SCHOOL-MPR	10201 SETTLE RD	June 4 to June 7
WEST HILLS HIGH SCHOOL - GYM FOYER	8756 MAST BLVD	June 4 to June 7
SOLANA BEACH - 92075		
SKYLINE ELEMENTARY SCHOOL-THEATER	606 LOMAS SANTA FE DR	June 4 to June 7
SPRING VALLEY - 91977		
FAITH CHAPEL-STUDENT CENTER	9400 CAMPO RD	June 4 to June 7
HIGHLANDS ELEM SCHOOL-MPR	3131 S BARCELONA ST	June 4 to June 7
NEW SEASONS CHURCH - YOUTH CENTER	2300 BANCROFT DR	June 4 to June 7
SPRING VALLEY COMMUNITY CTR-COMPUTER RM	8735 JAMACHA BLVD	May 28 to June 7
VALLEY CENTER - 92082		
VALLEY CENTER COMMUNITY HALL	28246 LILAC RD	June 4 to June 7
VALLEY CENTER PAUMA STAFF LOUNGE-RM 1	28751 COLE GRADE RD	June 4 to June 7
VISTA - 92081		
RANCHO BUENA VISTA HS-LIBRARY/MEDIA CTR	1601 LONGHORN DR	June 4 to June 7
VISTA - 92083		
LIFE CHRISTIAN CHURCH VISTA	1132 N MELROSE DR SUITE 502	June 4 to June 7
STONEBROOKE CHURCH-FELLOWSHIP HALL	145 HANNALEI DR	June 4 to June 7
VISTA INNOVATION CENTER-MPR	836 OLIVE AVE	June 4 to June 7
VISTA - 92084		
VISTA CIVIC CENTER - VANCE COMMUNITY RM	200 CIVIC CENTER DR, USE ALTA VISTA DR	May 28 to June 7
VISTA HIGH SCHOOL-GYM	1 PANTHER WAY	June 4 to June 7
WARNER SPRINGS - 92086		
WARNER UNION ELEM SCHL-LIBRARY	30951 HWY 79	June 4 to June 7

Proposed Ballot Drop Box Locations

The final list of locations will be posted on the Registrar's website under [Election Information](#).

A complete list of locations will also be provided in the Voter Information Pamphlet.

**Ballot Drop Box Locations become available starting May 9, 2022
(Days/Hours will vary)**

All Ballot Drop Box locations will be open Election Day, June 7, 7:00 am to 8:00 pm

Facility	Address	City	Zip
Alpine Branch Library	1752 Alpine Blvd	Alpine	91901
Bonita-Sunnyside Branch Library	4375 Bonita Rd	Bonita	91902
Bonita-Sunnyside Fire Protection District	4900 Bonita Rd	Bonita	91902
Corpus Christi Parish	450 Corral Canyon Rd	Bonita	91902
Daniel's Market	5256 S. Mission Rd Ste 701	Bonsall	92003
Borrego Springs Branch Library	2580 Country Club Rd	Borrego Springs	92004
Campo-Morena Village Branch Library	31356 Highway 94	Campo	91906
Cardiff-by-the-Sea Branch Library	2081 Newcastle Ave	Cardiff-by-the-Sea	92007
Agua Hedionda Lagoon Foundation/Discovery Center	1580 Cannon Rd	Carlsbad	92008
Carlsbad City Library Learning Center	3368 Eureka Pl	Carlsbad	92008
Georgina Cole Library	1250 Carlsbad Village Dr	Carlsbad	92008
Carlsbad City Library	1775 Dove Ln	Carlsbad	92011
Chula Vista Public Library Civic Center Branch	365 F St	Chula Vista	91910
First United Methodist Church	1200 E H St	Chula Vista	91910
Norman Park Senior Center	270 F St	Chula Vista	91910
Office of the Assessor/Recorder/County Clerk	590 3rd Ave	Chula Vista	91910
Otay Recreation Center	3554 Main St	Chula Vista	91911
South Chula Vista Library	389 Orange Ave	Chula Vista	91911
Westmont at San Miguel Ranch	2325 Proctor Valley Rd	Chula Vista	91914
Chula Vista Public Library	2015 Birch Rd Ste 409	Chula Vista	91915
Coronado Public Library	640 Orange Ave	Coronado	92118
Del Mar Branch Library	1309 Camino Del Mar	Del Mar	92014
Descanso Branch Library	9545 River Dr	Descanso	91916
Foothills Adult Education Center	1550 Melody Ln	El Cajon	92019
Postal Annex+	2514 Jamacha Rd Ste 502	El Cajon	92019
Rancho San Diego Branch Library	11555 Via Rancho San Diego	El Cajon	92019
El Cajon Branch Library	201 E Douglas Ave	El Cajon	92020
Fletcher Hills Branch Library	576 Garfield Ave	El Cajon	92020
California DMV	1450 Graves Ave	El Cajon	92021

Facility	Address	City	Zip
Crest Branch Library	105 Juanita Ln	El Cajon	92021
El Camino Memorial	340 Melrose Ave	Encinitas	92024
Encinitas Branch Library	540 Cornish Dr	Encinitas	92024
Encinitas Chamber of Commerce	535 Encinitas Blvd Ste 116	Encinitas	92024
Escondido Public Library	239 S Kalmia St	Escondido	92025
Major Market	1855 S Centre City Pkwy	Escondido	92025
Oakmont of Escondido Hills	3012 Bear Valley Pkwy S	Escondido	92025
Champagne Village	8975 Lawrence Welk Dr	Escondido	92026
Rincon del Diablo Municipal Water District	1920 N Iris Ln	Escondido	92026
Fallbrook Branch Library	124 S Mission Rd	Fallbrook	92028
Rainbow Municipal Water District	3707 Old Hwy 395	Fallbrook	92028
Imperial Beach Branch Library	810 Imperial Beach Blvd	Imperial Beach	91932
Jacumba Branch Library	44605 Old Highway 80	Jacumba	91934
Julian Branch Library	1850 Highway 78	Julian	92036
La Jolla/Riford Library	7555 Draper Ave	La Jolla	92037
Lawrence Family Jewish Community Center	4126 Executive Dr	La Jolla	92037
Frazier Farms	8401 Fletcher Parkway	La Mesa	91942
La Mesa Branch Library	8074 Allison Ave	La Mesa	91942
Westmont of La Mesa	9000 Lake Murray Dr	La Mesa	91942
Lakeside Branch Library	9839 Vine St	Lakeside	92040
Bella Vista Health Center	7922 Palm St	Lemon Grove	91945
Lemon Grove Branch Library	3001 School Ln	Lemon Grove	91945
Lincoln Acres Branch Library	2725 Granger Ave	National City	91950
National City Public Library	1401 National City Blvd	National City	91950
Frazier Farms	1820 Oceanside Blvd	Oceanside	92054
King of Kings Lutheran Church	2993 MacDonald St	Oceanside	92054
Oceanside Public Library	330 N Coast Hwy	Oceanside	92054
Dog Dayz of California	1995 Peacock Blvd	Oceanside	92056
Oceanside Public Library Mission Branch	3861-B Mission Ave	Oceanside	92058
Postal Annex+	4140 Oceanside Blvd Ste 159	Oceanside	92056
Postal Annex+	825 College Blvd Ste 102	Oceanside	92057
Yuima Municipal Water District	34928 Valley Center Rd	Pauma Valley	92061
Pine Valley Branch Library	28804 Old Highway 80	Pine Valley	91962
Potrero Branch Library	24883 Potrero Valley Rd	Potrero	91963
Old Poway Park	14134 Midland Rd	Poway	92064
Postal Annex+	14781 Pomerado Rd	Poway	92064
Poway Branch Library	13137 Poway Rd	Poway	92064
Ramona Branch Library	1275 Main St	Ramona	92065

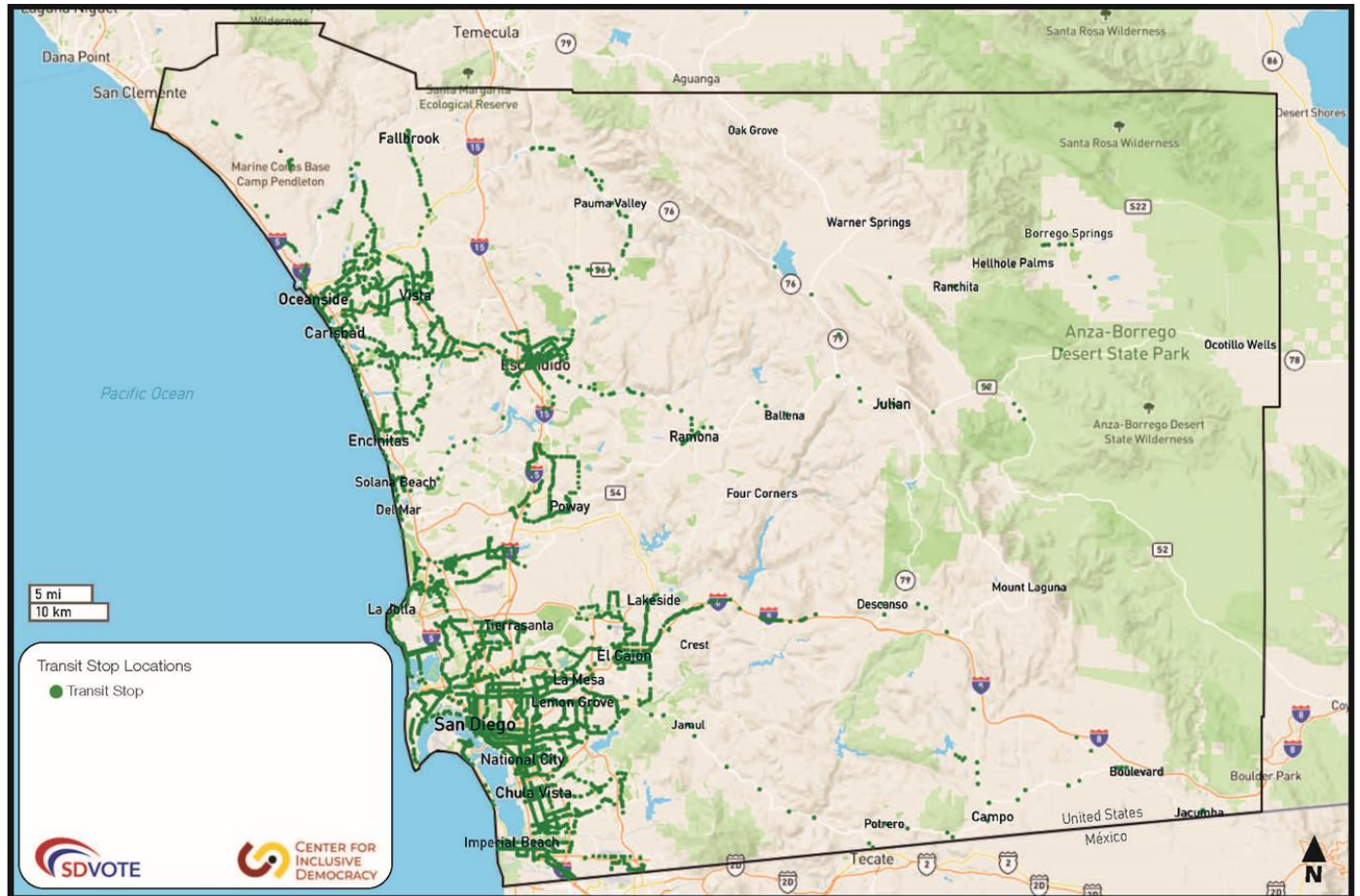
Facility	Address	City	Zip
Rancho Santa Fe Branch Library	17040 Avenida de Acacias	Rancho Santa Fe	92067
Rancho Santa Fe Fire Protection District	18027 Calle Ambiente	Rancho Santa Fe	92067
Central Library	330 Park Blvd	San Diego	92101
Firehouse Museum	1572 Columbia St	San Diego	92101
San Diego Unified Port District	3165 Pacific Hwy	San Diego	92101
The Old Globe	1363 Old Globe Way	San Diego	92101
Mission Hills-Hillcrest/Knox Library	215 W Washington St	San Diego	92103
University Heights Library	4193 Park Blvd	San Diego	92103
North Park Library	3795 31st St	San Diego	92104
City Heights/Weingart Library	3795 Fairmount Ave	San Diego	92105
Oak Park Library	2802 54th St	San Diego	92105
Ocean Beach Library	4801 Santa Monica Ave	San Diego	92107
Point Loma/Hervey Library	3701 Voltaire St	San Diego	92107
Mission Valley Library	2123 Fenton Pkwy	San Diego	92108
Pacific Beach/Taylor Library	4275 Cass St	San Diego	92109
Clairemont Library	2920 Burgener Blvd	San Diego	92110
San Diego Humane Society	5480 Gaines St	San Diego	92110
Linda Vista Library	2160 Ulric St	San Diego	92111
Barrio Station	2175 Newton Ave	San Diego	92113
Logan Heights Library	567 S 28th St	San Diego	92113
Mountain View/Beckwourth Library	721 San Pasqual St	San Diego	92113
Valencia Park/Malcolm X Library	5148 Market St	San Diego	92114
College-Rolando Library	6600 Montezuma Rd	San Diego	92115
San Diego Center for the Blind	5922 El Cajon Blvd	San Diego	92115
The Salvation Army Kroc Center	6845 University Ave	San Diego	92115
Kensington-Normal Heights Library	4121 Adams Ave	San Diego	92116
Balboa Library	4255 Mt Abernathy Ave	San Diego	92117
North Clairemont Library	4616 Clairemont Dr	San Diego	92117
San Carlos Library	7265 Jackson Dr	San Diego	92119
Allied Gardens/Benjamin Library	5188 Zion Ave	San Diego	92120
North University Community Library	8820 Judicial Dr	San Diego	92122
University Community Library	4155 Governor Dr	San Diego	92122
Office of the Assessor/Recorder/County Clerk	9225 Clairemont Mesa Blvd	San Diego	92123
Registrar of Voters	5600 Overland Ave	San Diego	92123
Serra Mesa-Kearny Mesa Library	9005 Aero Dr	San Diego	92123
Tierrasanta Library	4985 La Cuenta Dr	San Diego	92124
Mira Mesa Library	8405 New Salem St	San Diego	92126
4S Ranch Branch Library	10433 Reserve Dr	San Diego	92127

Facility	Address	City	Zip
Carmel Mountain Ranch Library	12095 World Trade Dr	San Diego	92128
Rancho Bernardo Library	17110 Bernardo Center Dr	San Diego	92128
Rancho Penasquitos Library	13330 Salmon River Rd	San Diego	92129
Carmel Valley Library	3919 Townsgate Dr	San Diego	92130
Scripps Miramar Ranch Library	10301 Scripps Lake Dr	San Diego	92131
Paradise Hills Library	5922 Rancho Hills Dr	San Diego	92139
Skyline Hills Library	7900 Paradise Valley Rd	San Diego	92139
California DMV	6111 Business Center Ct	San Diego	92154
Otay Mesa-Nestor Library	3003 Coronado Ave	San Diego	92154
Postal Annex+	4370 Palm Ave Ste D	San Diego	92154
San Marcos Branch Library	2 Civic Center Dr	San Marcos	92069
Woodland Village Apartments	975 Woodland Pkwy	San Marcos	92069
Office of the Assessor/Recorder/County Clerk	141 E Carmel St	San Marcos	92078
St Marks's Roman Catholic Church	1147 Discovery St	San Marcos	92078
Casa Familiar Community Center	268 E Park Ave	San Ysidro	92173
San Ysidro Library	4235 Beyer Blvd	San Ysidro	92173
Office of the Assessor/Recorder/County Clerk	10144 Mission Gorge Rd	Santee	92071
Postal Annex+	9830 Magnolia Ave	Santee	92071
Santee Branch Library	9225 Carlton Hills Blvd #17	Santee	92071
Solana Beach Branch Library	157 Stevens Ave	Solana Beach	92075
Casa de Oro Branch Library	9805 Campo Rd #180	Spring Valley	91977
Spring Valley Branch Library	836 Kempton St	Spring Valley	91977
San Miguel Fire Protection District	2850 Via Orange Way	Spring Valley	91978
Valley Center Branch Library	29200 Cole Grade Rd	Valley Center	92082
Frazier Farms	225 Vista Village Dr	Vista	92083
Vista Branch Library	700 Eucalyptus Ave	Vista	92084
Vista Elks Lodge 1968	1947 E Vista Way	Vista	92084

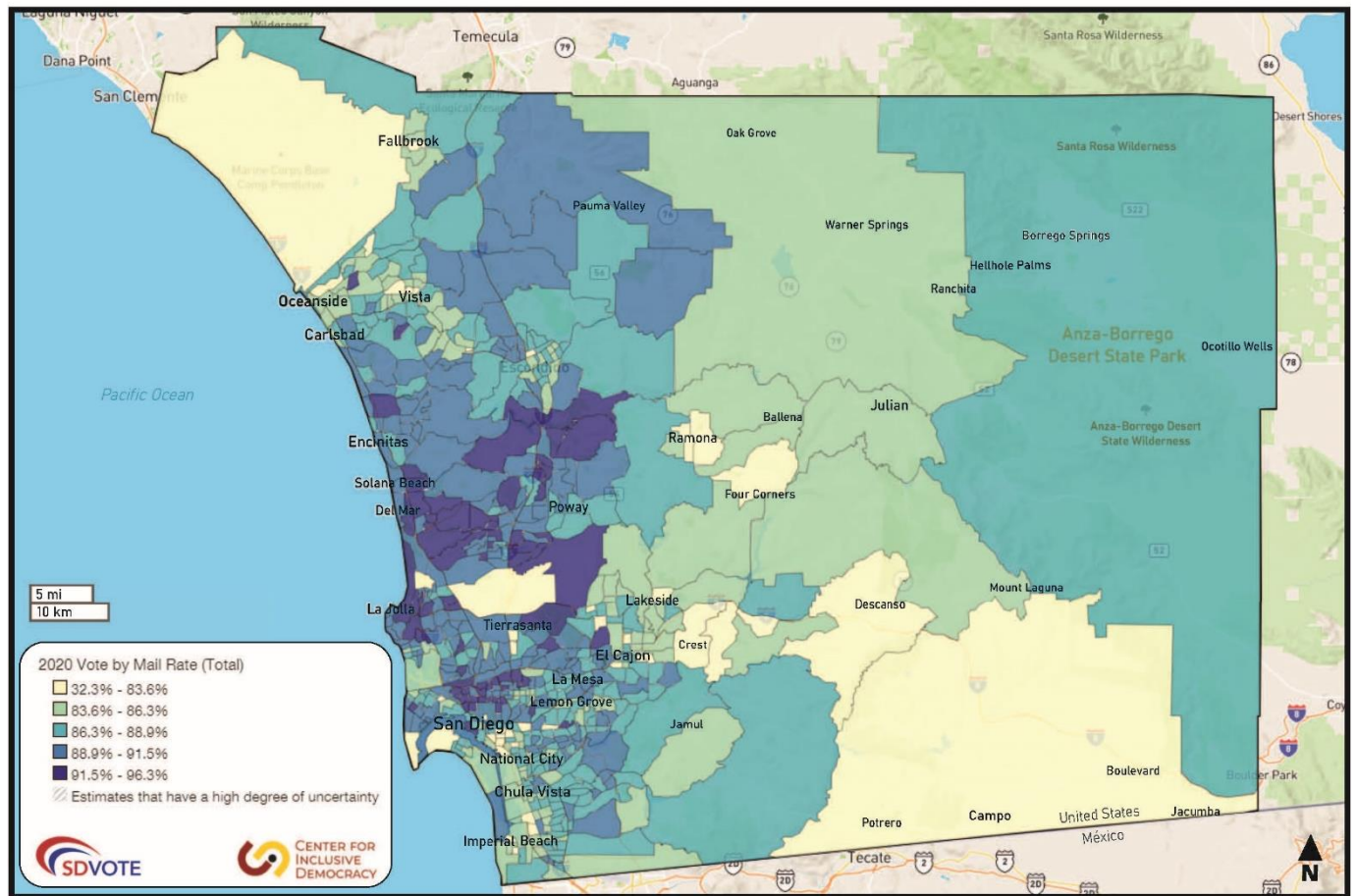
If you would like to suggest a potential site, please complete the Site Selection Suggestion Form at [Voter's Choice Act \(sdvote.com\)](https://sdvote.com). This form will be available to the public until vote center and ballot drop box locations are finalized.

Voter's Choice Act Criteria Maps

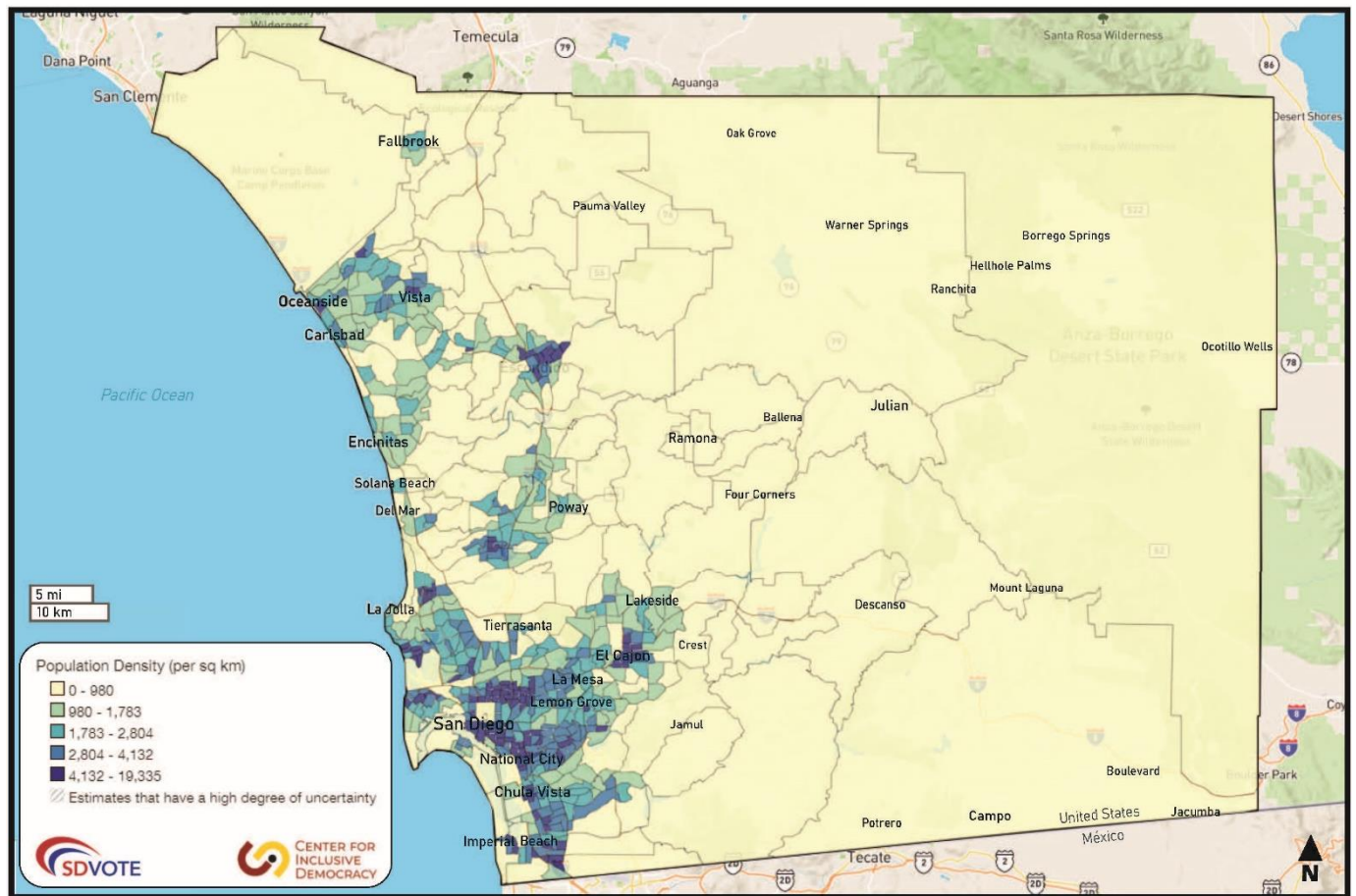
Public Transit Routes



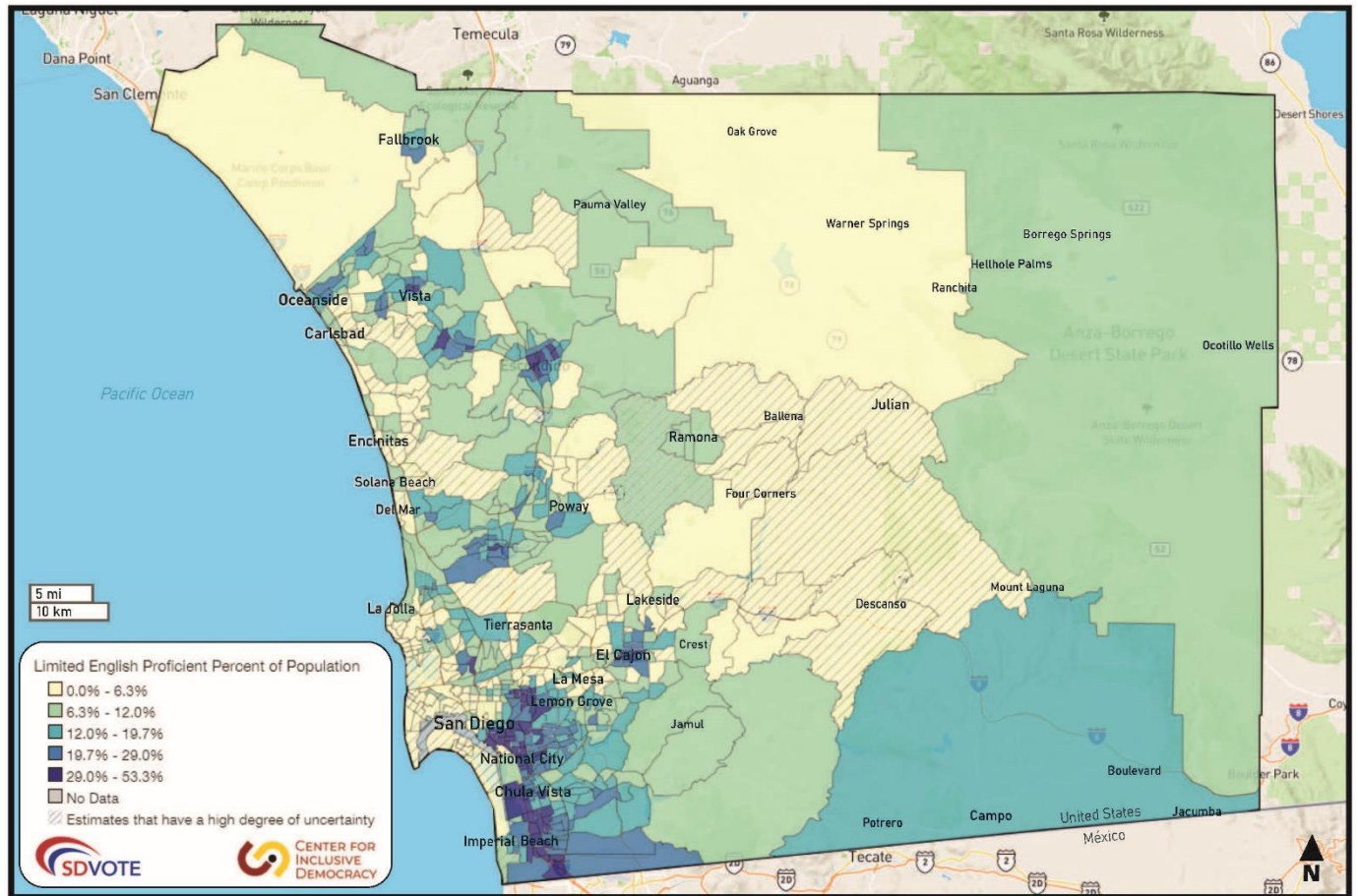
Areas with Low Vote-by-Mail Usage



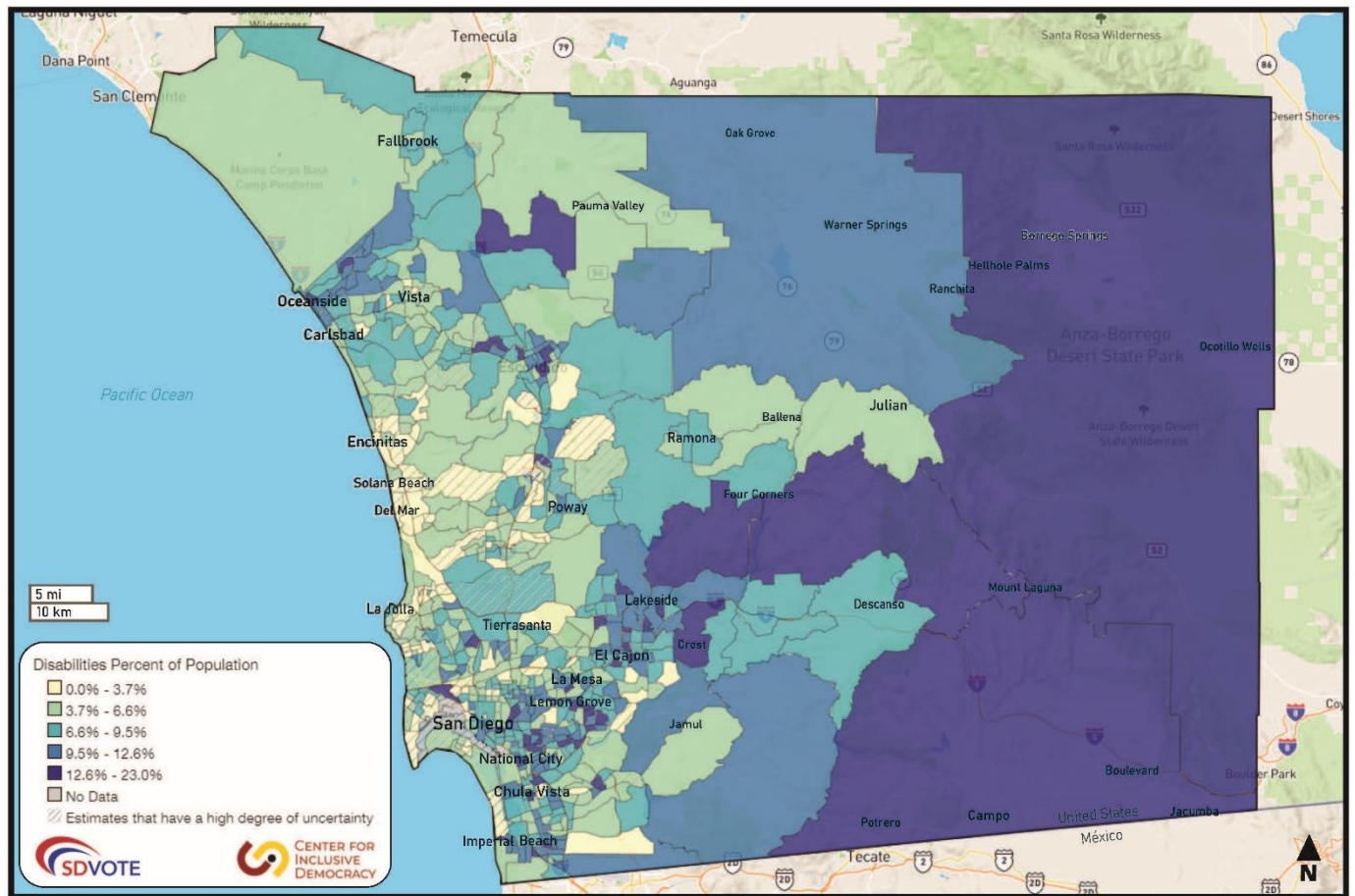
Population Density



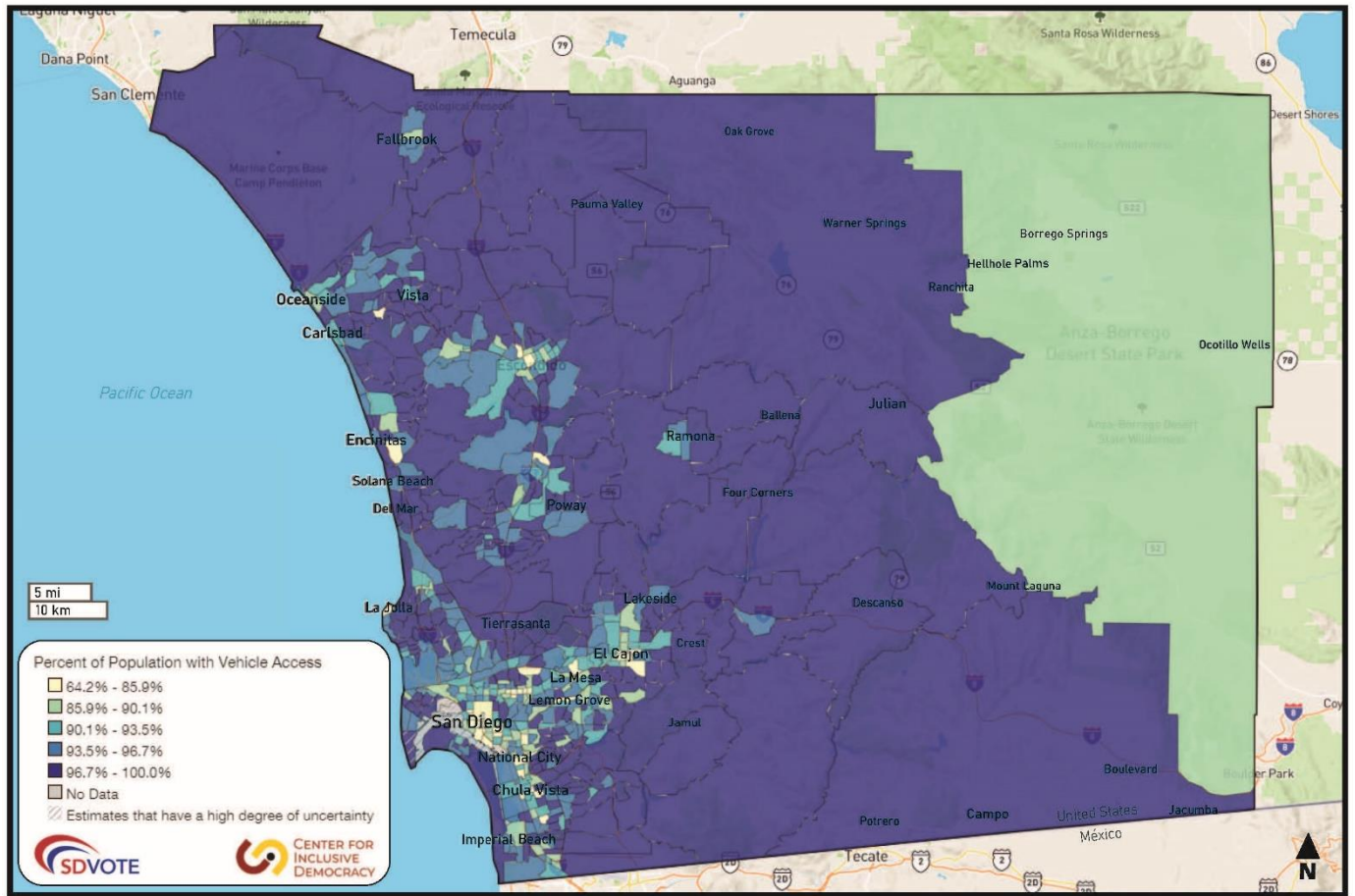
Limited English Proficiency



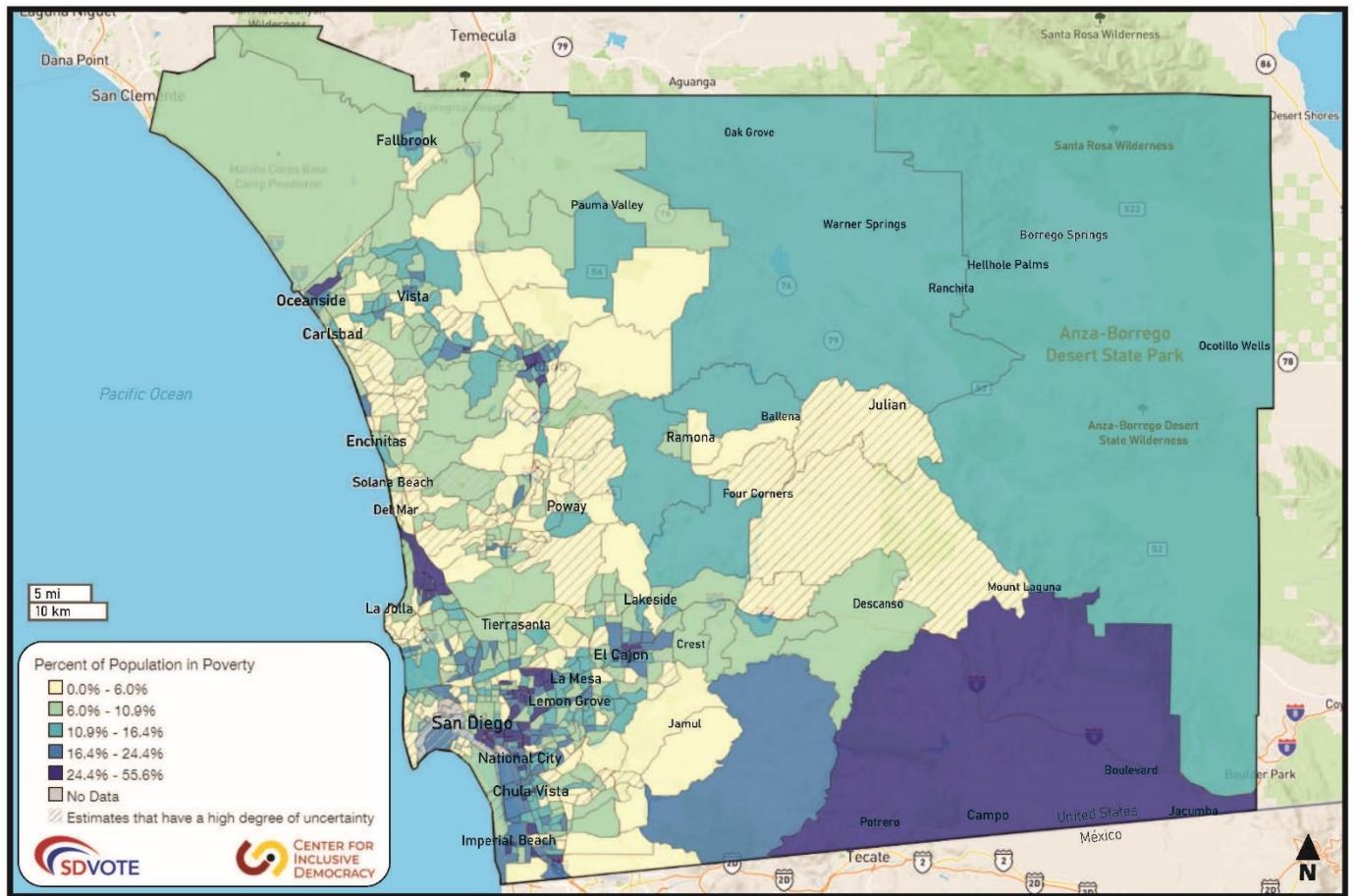
Voters with Disabilities



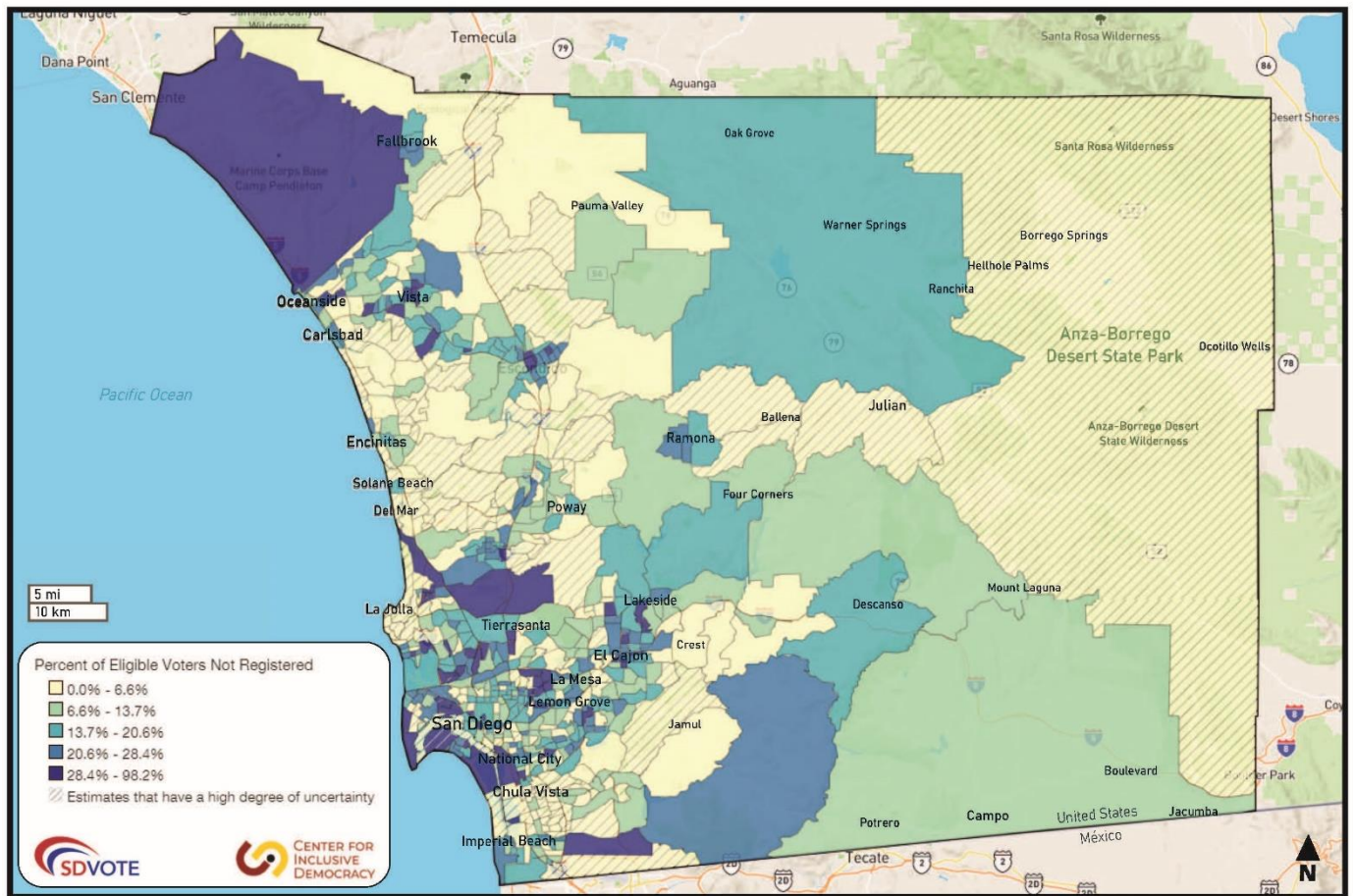
Low Rates of Vehicle Ownership



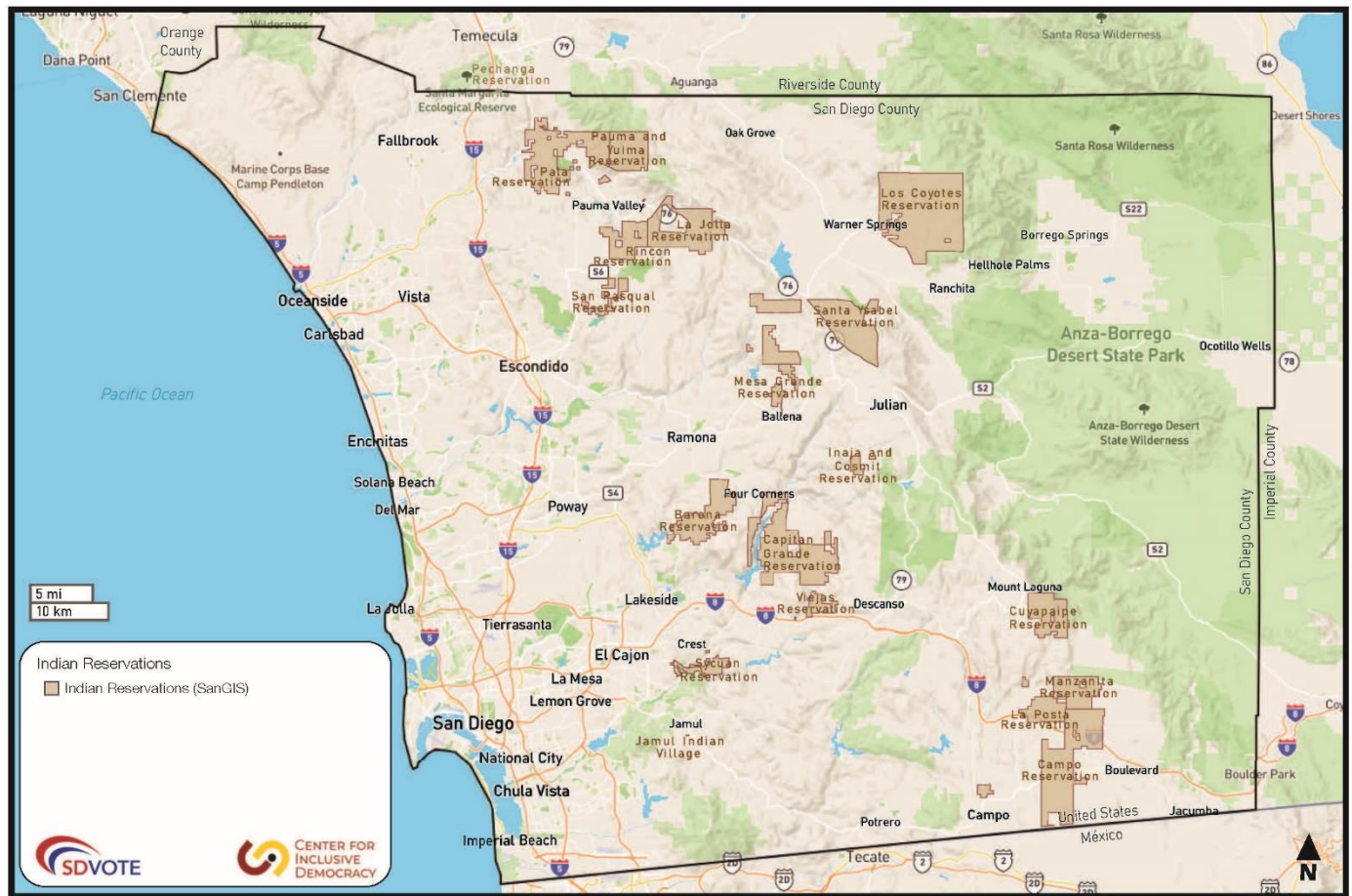
Areas with Low-Income Communities



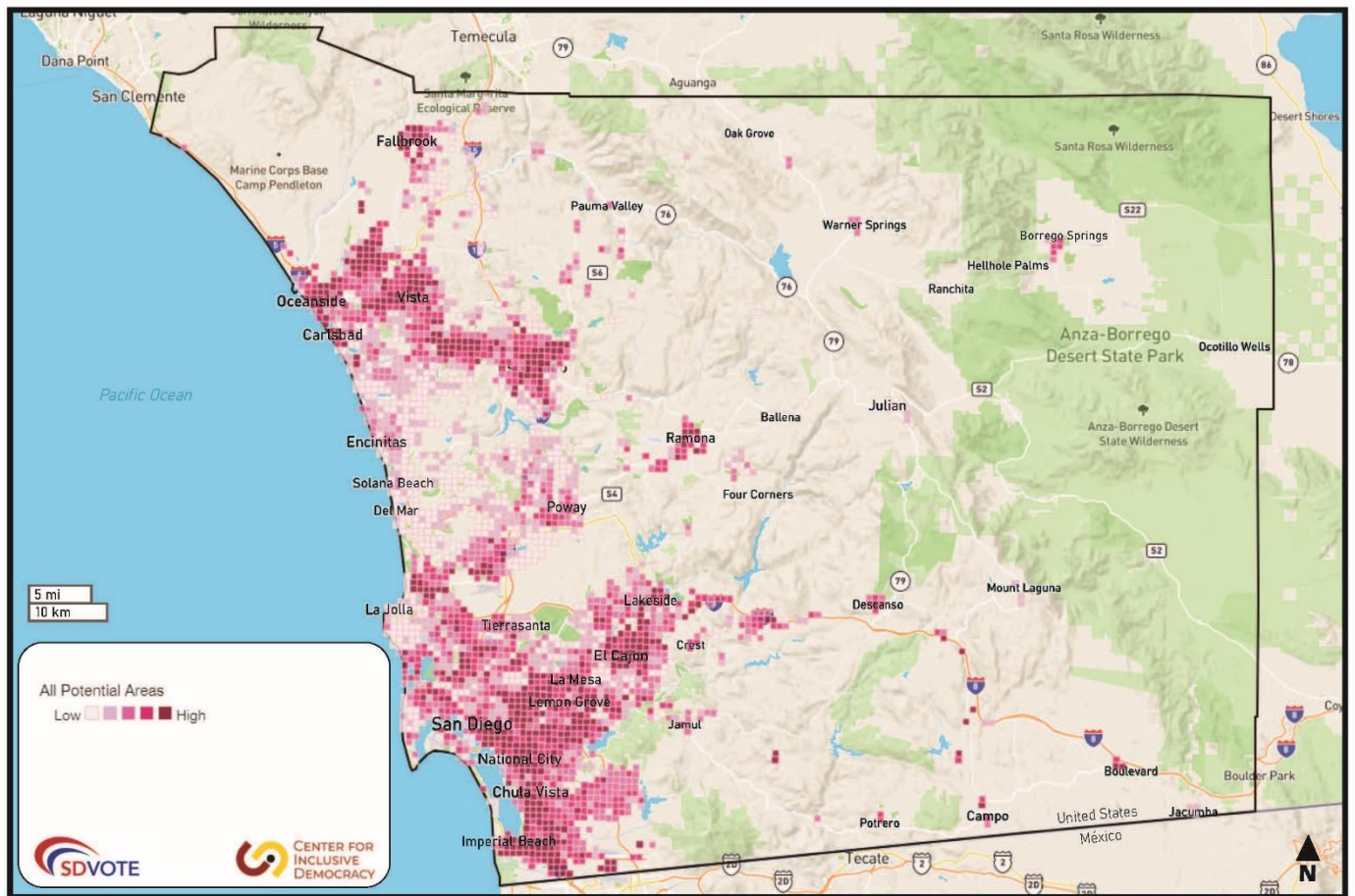
Eligible Residents who are Not Yet Registered to Vote



Geographically Isolated Populations

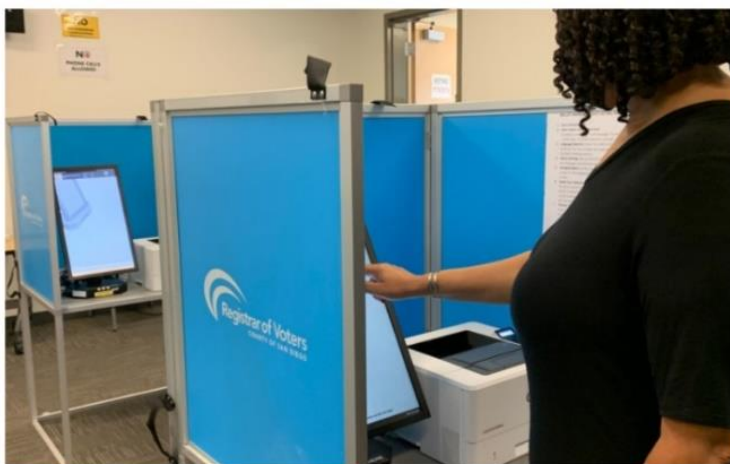


Potential Areas for Vote Center or Ballot Drop Box Locations



ELECTIONS

Registrar Holding Meetings for Input on County's Election Administration Plan



A staff member with the Registrar of Voters demonstrates how to vote on a ballot marking device.

By [Tracy DeFore](#), County of San Diego Communications Office
Dec. 8, 2021 | 2:53 PM

The Registrar of Voters office is holding a series of consultation meetings inviting the public to have a say in creating the County's new Election Administration Plan.

The meetings begin Thursday and continue through January. The plan describes how the Registrar's office will administer elections under the Voter's Choice Act. The public can give input on where to locate vote centers and ballot drop boxes. Attendees can also give feedback on voter education and outreach plans.

The Registrar's office is creating the plan because the Board of Supervisors approved the transition to the vote center model on Oct. 19.

The vote center model falls under the [Voter's Choice Act](#), and it modernizes the election process in several ways.

Active registered voters automatically receive a ballot in the mail. In-person voting moves from traditional polling places to vote centers. And voters have the option to return their ballot by mail, a secure ballot drop box, or vote in person at any vote center. All the vote centers are open for four days and some up to 11 days, giving voters more time to return their ballot for Election Day.

The concept isn't entirely new to local voters. Due to the COVID-19 pandemic, the Registrar of Voters used a similar voting model for the November 2020 presidential general and September 2021 gubernatorial recall elections.

TRANSLATE

Select Language ▼

GET UPDATES

Get County News Center stories emailed direct to you.

Email Address

SIGN ME UP

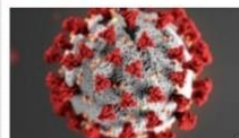
LATEST NEWS



[State Issues Mask Mandate for Indoor Public Places](#)



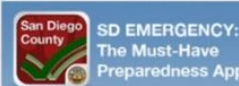
[Human Relations Commission Honors Leon L. Williams, Other Community Leaders](#)



[Locally Acquired Omicron Case Identified in San Diego County](#)



[5 Ways to Prevent Winter Home Fires](#)



With SD Emergency, the tools you need to plan, prepare and respond in an emergency are right at your fingertips.

Publications

Public Notice for Consultation Meetings

PUBLIC NOTICE CONSULTATION MEETINGS

Notice is hereby given that a virtual Consultation Meeting for the development of the Draft Election Administration Plan (EAP) pursuant to the Voter's Choice Act (VCA) will be held on **Monday, January 24, 2022**. This virtual meeting is for interested residents, representatives from the disability community, and community organizations and individuals that advocate on behalf of, or provide services to, individuals with disabilities and for representatives, advocates, and other stakeholders representing each of the county's state and federally covered language communities.

Federally Covered Communities

Spanish Vietnamese Native American Filipino Chinese

State Covered Communities

Arabic Korean Japanese Laotian

The VCA modernizes voting by providing voters with multiple convenient options for casting their ballot. The public, including advocates and stakeholders representing persons with disabilities and the county's state and federally covered language communities are invited to provide input on the Election Administration Plan, which includes siting of vote centers and ballot drop box locations, as well as voter education and outreach plans.

On January 13, 2022, the draft EAP will be posted on the Registrar's website at Voter's Choice Act (sdvote.com). Translations of the draft EAP will also be posted in the county's state and federally covered languages. The public is invited to review the draft plan and provide additional feedback using the Registrar's online tools.

The San Diego County Registrar of Voters invites interested representatives of the county's disability communities and language communities to provide consultation and input on the development of the county's draft EAP. All interested parties are encouraged to attend the virtual meeting on Monday, January 24, 2022, from 5:30 p.m. to 7:30 p.m.

Join the Zoom meeting by computer or mobile device:

LINK: <https://sdvote.zoom.us/j/91390186899>

Webinar ID: 913 9018 6899

Use the "raise hand" button to inform the moderator that you would like to comment.

Public Notice for Consultation Meetings (continued)

Join the Zoom meeting by telephone:

Dial Toll Free: (877) 853-5257 or (888) 475-4499

Webinar ID: 913 9018 6899

Press *9 to inform the moderator that you would like to comment.

Notice is further given that additional in-person and virtual consultation meetings are taking place throughout the months of December 2021 and January 2022. The San Diego County Registrar of Voters invites interested residents, representatives from the disability community, and community organizations and individuals that advocate on behalf of, or provide services to, individuals with disabilities and representatives, advocates, and other stakeholders representing each of the county's state and federally covered language communities. You can find the updated schedule and detailed meeting information at Community Calendar (sdvote.com).

For disability or language accommodations, please call (800) 696-0136 (voice) or email rovmail@sdcounty.ca.gov at least four business days in advance of the scheduled consultation meeting. The San Diego County Registrar's office will do its best to fulfill requests received with less than four business days notice.

Dated this 8th day of December 2021.

Cynthia Paes
Registrar of Voters

Public Notice for Election Administration Plan Comment Period



CYNTHIA L. PAES
Registrar of Voters

County of San Diego

REGISTRAR OF VOTERS

County Operations Center Campus

5600 Overland Avenue, Suite 100, San Diego, California 92123-1278

Telephone: (858) 565-5800 Toll-free: 1 (800) 696-0136 TTY / TDD: (800) 735-2929

Facsimile: (858) 505-7294 Web Address: www.sdvote.com

PUBLIC NOTICE ELECTION ADMINISTRATION PLAN

Notice is hereby given that the Draft Election Administration Plan is posted on the Registrar of Voters website at [Voter's Choice Act \(sdvote.com\)](http://Voter's Choice Act (sdvote.com)). The Draft Plan is available in English, Arabic, Chinese, Filipino, Japanese, Korean, Spanish, and Vietnamese in accordance with state and federal law.

The 14-day public comment period for the Draft Election Administration Plan has been extended to accommodate two public hearings. The last day to provide comments on the Draft Plan is Friday, February 4, 2022 at 5 p.m.

Notice is further given that on February 21, 2022, the Amended Election Administration Plan will be posted on the Registrar of Voter's website at [Voter's Choice Act \(sdvote.com\)](http://Voter's Choice Act (sdvote.com)). The Amended Plan will be available in English and will be translated into Arabic, Chinese, Filipino, Japanese, Korean, Spanish, and Vietnamese in accordance with state and federal law.

The 14-day public comment period for the Amended Election Administration Plan will end Sunday, March 6, 2022 at 5 p.m.

Comments on the Plan may be submitted using the online comment form on the Registrar's website at [Voter's Choice Act \(sdvote.com\)](http://Voter's Choice Act (sdvote.com)), by email to rovmail@sdcounty.ca.gov, in writing, or at the January 28 or February 3 public hearings. Written comments should be addressed to the San Diego County Registrar of Voters, 5600 Overland Ave., San Diego, CA 92123.

For more information regarding the Election Administration Plan, please call (858) 565-5800, toll free at (800) 696-0136, or visit [Voter's Choice Act \(sdvote.com\)](http://Voter's Choice Act (sdvote.com)).

Dated this 21st day of January 2022.

A handwritten signature in blue ink, appearing to read "Cynthia Paes".

Cynthia Paes
Registrar of Voters

Public Notice for Public Hearing



CYNTHIA L. PAES
Registrar of Voters

County of San Diego

REGISTRAR OF VOTERS

County Operations Center Campus

5600 Overland Avenue, Suite 100, San Diego, California 92123-1278

Telephone: (858) 565-5800 Toll-free: 1 (800) 696-0136 TTY / TDD: (800) 735-2929

Facsimile: (858) 505-7294 Web Address: www.sdvote.com

PUBLIC NOTICE

Notice is hereby given that a Public Hearing for the Draft Election Administration Plan pursuant to the Voter's Choice Act will be held on Friday, January 28, 2022. Due to increasing COVID-19 cases and current COVID-19 guidance, the upcoming public hearing will be held virtually.

Notice is further given that the Draft Election Administration Plan is posted on the Registrar of Voter's website at [Voter's Choice Act \(sdvote.com\)](http://Voter's Choice Act (sdvote.com)). The plan is available in English and is translated into the county's local, state, and federally covered languages in accordance with the law.

Federally Covered Languages

Spanish Filipino Vietnamese Chinese

State Covered Languages

Japanese Korean

County of San Diego Board Policy Covered Language

Arabic

Comments on the plan may be submitted using the online comment form on the Registrar's website at [Voter's Choice Act \(sdvote.com\)](http://Voter's Choice Act (sdvote.com)), by email to rovmail@sdcounty.ca.gov, in writing, or at the public hearing. Written comments should be addressed to the San Diego County Registrar of Voters, 5600 Overland Ave., San Diego, CA 92123.

Meeting Date: Friday, January 28, 2022

Meeting Time: 5:30 p.m. to 7:30 p.m.

Zoom webinar information will be available soon at sdvote.com under [Voter's Choice Act \(sdvote.com\)](http://Voter's Choice Act (sdvote.com)) and on the [Community Calendar \(sdvote.com\)](http://Community Calendar (sdvote.com)).

For more information regarding the Public Hearing, please call (858) 565-5800, toll free at (800) 696-0136, or visit [Voter's Choice Act \(sdvote.com\)](http://Voter's Choice Act (sdvote.com)).

For disability or language accommodations, please call (858) 565-5800, toll free (800) 696-0136 or email rovmail@sdcounty.ca.gov at least five business days in advance of the hearing. The Registrar's office will do its best to fulfill requests received with less notice.

Dated this 17th day of January 2022.

Cynthia Paes
Registrar of Voters

Public Notice for Second Public Hearing



CYNTHIA L. PAES
Registrar of Voters

County of San Diego

REGISTRAR OF VOTERS

County Operations Center Campus
5600 Overland Avenue, Suite 100, San Diego, California 92123-1278

Telephone: (858) 565-5800 Toll-free: 1 (800) 696-0136 TTY / TDD: (800) 735-2929
Facsimile: (858) 505-7294 Web Address: www.sdvote.com

PUBLIC NOTICE

Notice is hereby given that a second Public Hearing for the Draft Election Administration Plan pursuant to the Voter's Choice Act will be held on Thursday, February 3, 2022. Due to increasing COVID-19 cases and current COVID-19 guidance, the upcoming public hearing will be held virtually and in-person. The public is encouraged to join virtually in order to provide sufficient space in the room for those who need to participate in-person.

Notice is further given that the Draft Election Administration Plan is posted on the Registrar of Voter's website at [Voter's Choice Act \(sdvote.com\)](http://Voter's Choice Act (sdvote.com)). The plan is available in English and is translated into the county's local, state, and federally covered languages in accordance with the law and county policy.

Federally Covered Languages

Spanish Filipino Vietnamese Chinese

State Covered Languages

Japanese Korean

County of San Diego Board Policy Covered Language

Arabic

Comments on the plan may be submitted using the online comment form on the Registrar's website at [Voter's Choice Act \(sdvote.com\)](http://Voter's Choice Act (sdvote.com)), by email to rovmail@sdcounty.ca.gov, in writing, or at the public hearing. Written comments should be addressed to the San Diego County Registrar of Voters, 5600 Overland Ave., San Diego, CA 92123.

Meeting Date: Thursday, February 3, 2022

Meeting Time: 5:30 p.m. to 7:30 p.m.

Meeting Location: County Administration Center – Chamber Room 310
1600 Pacific Highway
San Diego, CA 92101

Zoom webinar information will be available soon at sdvote.com under [Voter's Choice Act \(sdvote.com\)](http://Voter's Choice Act (sdvote.com)) and on the [Community Calendar \(sdvote.com\)](http://Community Calendar (sdvote.com)).

For more information regarding the Public Hearing, please call (858) 565-5800, toll free at (800) 696-0136, or visit [Voter's Choice Act \(sdvote.com\)](http://Voter's Choice Act (sdvote.com)).

For disability or language accommodations, please call (858) 565-5800, toll free (800) 696-0136 or email rovmail@sdcounty.ca.gov at least five business days in advance of the hearing. The Registrar's office will do its best to fulfill requests received with less notice.

Dated this 25th day of January 2022.

Cynthia Paes
Registrar of Voters

Direct Mailer – Front/Back (Sample)



VOTE! MORE DAYS. MORE WAYS.

Under the Voter's Choice Act, you choose when, where, and how you vote.

Every active registered voter in San Diego County will receive a ballot
in the mail for the June 7, 2022 Gubernatorial Primary Election.

MAIL IT. DROP IT. VISIT.

Toll Free (800) 696-0136 sdvote.com #SDVOTE



Verify


Under the Voter's Choice Act, every active registered voter in San Diego County will automatically receive a ballot in the mail for the June 7, 2022, Gubernatorial Primary Election. Make sure your voter registration information is up to date. By doing so, you will ensure there are no delays in receiving your voting materials.

Take a moment now to verify your home and mailing address:

<<ResHeading>>	<<MailHeading>>
<<ResAddr1>>	<<MailAddr1>>
<<ResAddr2>>	<<MailAddr2>>
<<ResAddr3>>	<<MailCSZ>>
<<ResCSZ>>	<<MailCountry>>

If everything is correct no further action is needed.
If not, you can update your registration in a matter of minutes by completing a new voter registration online at sdvote.com.


Look inside to learn more!



County of San Diego
Registrar of Voters
5600 Overland Ave STE 100
San Diego, CA 92123

NON PROFIT ORG
U.S. POSTAGE
PAID
SAN DIEGO, CA
PERMIT NO. 4

RETURN SERVICE REQUESTED



<<NCOAVoterName>>
<<NCOAMailAddress1>>
<<NCOAMailAddress2>>
<<NCOACSZ>>
<<NCOACountry>>

REDISTRICTING

Every 10 years, political jurisdictions must equalize their district boundaries using the latest Census population count – resulting in possible changes to what districts you live in. As a courtesy, we are confirming the County of San Diego Board of Supervisor district you live in.

Your Board of Supervisor District is: <<County Board of Supervisors, District #>>

Note: As other political jurisdictions submit their boundary lines to us, you can check sdvote.com to get the latest update on what districts you live in.

<<3 of 9 Barcode>>
<<VID>>

California's Gubernatorial Primary Election is June 7, 2022. Know your voting options.

Vote By Mail

Ballots will be mailed to **EVERY** active registered voter beginning **May 9, 2022**. You should expect to receive yours that same week.

Sign and date your return envelope, seal your completed ballot inside, and return it through the U.S. Postal Service. Remember to sign your return envelope!

Your signature is required for your vote to count.

You can track your mail ballot envelope as it moves through the U.S. Postal Service by signing up for **Where's My Ballot?** at sdvote.com.

Ballot Drop Box

Return your mail ballot to any of the Registrar of Voter's secure ballot drop box locations.

Drop box locations will open May 9, 2022. Visit sdvote.com for hours of operation before heading out with your ballot.

Vote Centers

Vote Centers replace polling places. You can vote in person at any Vote Center in San Diego County. Services include:

- Vote in person or drop off your voted mail ballot
- Register to vote or update your registration
- Receive voting assistance in multiple languages

SOME Vote Centers will be open 11 days, including Election Day and **ALL** Vote Centers will be open 4 days, including Election Day.

The first Vote Centers will open May 28, 2022. Avoid lines by voting early!

A complete list of Ballot Drop Box and Vote Center locations will be available at sdvote.com on March 28, 2022.

Accessible Voting

The Registrar of Voters is committed to providing voters with disabilities the resources to vote privately and independently at all Vote Centers or by voting in the comfort of their homes using the Remote Accessible Vote By Mail (RAVBM) system.

For more information, call (858) 565-5800, toll-free (800) 696-0136, or visit sdvote.com.

You may also request to receive your election materials in Spanish, Filipino, Vietnamese, or Chinese.

Para más información, llame al (858) 565-5800, sin costo alguno al (800) 696-0136, o visite sdvote.com. También puede solicitar recibir sus materiales electorales en español, filipino, vietnamita o chino.

Para sa higit pang impormasyon, tumawag sa (858) 565-5800, toll free sa (800) 696-0136, o bisitahin ang sdvote.com. Maaari rin kayong humingi upang makatanggap ng inyong materyales sa eleksyon sa Spanish, Filipino, Vietnamese, o Chinese.

Để biết thêm thông tin, xin gọi (858) 565-5800, điện thoại miễn phí (800) 696-0136, hay truy cập sdvote.com. Quý vị cũng có thể yêu cầu nhận tài liệu bầu cử của mình bằng tiếng Tây Ban Nha, Phi Luật Tân, Việt Nam, hay Trung Hoa.

如需更多資訊，請致電 (858) 565-5800 或 (800) 696-0136 (免付費電話) 或瀏覽 sdvote.com。您亦可要求收取西班牙文、菲律賓文、越南文或中文的選舉資料。

COVID-19 Protocols

The Registrar of Voter's office has established protocols in place to ensure the health and safety of election workers, voters and observers to our office, vote centers and mail ballot drop-box locations. The Registrar's office will continue to follow the County's public health guidance and orders that are in place at the time of the election and voting period.

- Masks and gloves are available for all visitors, election workers, and poll workers
- Hand sanitizer readily available
- Election workers and poll workers will be provided N95 mask and in some cases face shields
- Regular cleaning and disinfecting of frequently touched objects and surfaces

The Registrar's office will continue to encourage voters to wear a face covering when appropriate, maintain a comfortable distance, avoid gathering in groups, and follow all signs and directions from election workers.

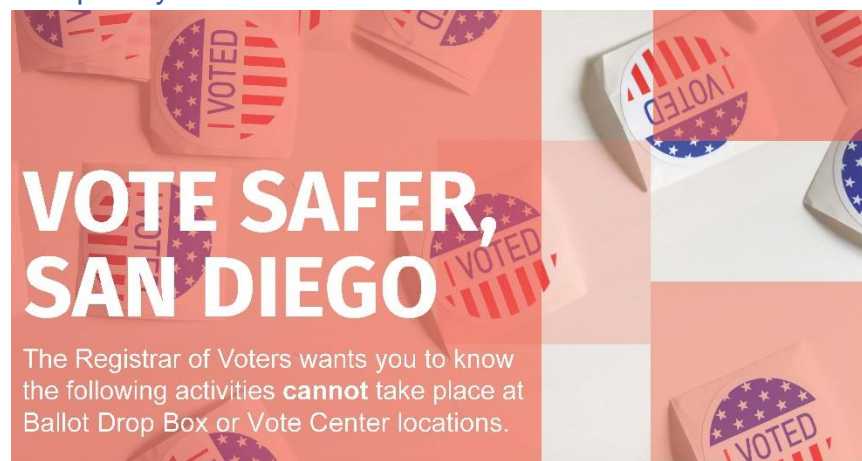
These protocols will continue to evolve depending on the most current public health guidance.

Prohibited Activities

The Registrar's office works collaboratively with local law enforcement agencies to ensure Ballot Drop Box and Vote Center locations are secure and that voters can cast their ballot free from interference or intimidation. This messaging is also incorporated into the Registrar's social media campaign.

Voters are asked to report any concerns to Voter Center staff. The Registrar's office trains its staff on what prohibited activities to look out for and what steps to take.

Sample Flyer



The following is **prohibited** pursuant to the California Elections Code.

 Intimidation of Voters CA Elections Code §18540	 Tampering with Voting System CA Elections Code §18564	 Falsely Acting as Elections Officials CA Elections Code §18573	 Unauthorized Uniformed Personnel CA Elections Code §18544
 Payment for Voting or Bribery CA Elections Code §18310/§18523	 Campaigning at or Near Voting Locations CA Elections Code §18370	 Vandalism at Voting Locations CA Elections Code §18380	 Interfering with the Election Process CA Elections Code §18502

REPORT SUSPICIOUS BEHAVIOR TO THE REGISTRAR'S OFFICE (858) 565-5800, OR TO THE SAN DIEGO LAW ENFORCEMENT COORDINATION CENTER (858) 495-7200 OR WWW.SD-LECC.ORG

IF AN EMERGENCY, CALL 9-1-1

Your Safety Is Always Our Priority

As in all elections, the Registrar of Voters works collaboratively with local law enforcement agencies to ensure Ballot Drop Box and Vote Center locations are secure and that individuals are not interfering or suppressing voters from casting their ballot. If you see something suspicious, **contact 9-1-1 for an emergency** or call your local law enforcement agency's non-emergency line.

LOCAL SAN DIEGO COUNTY LAW ENFORCEMENT AGENCIES NON-EMERGENCY LINES



CARLSBAD POLICE DEPT.	(760) 931-2197	LA MESA POLICE DEPT.	(619) 667-1400
CHULA VISTA POLICE DEPT.	(619) 691-5151	NATIONAL CITY POLICE DEPT.	(619) 336-4411
CORONADO POLICE DEPT.	(619) 522-7350	OCEANSIDE POLICE DEPT.	(760) 435-4900
EL CAJON POLICE DEPT.	(619) 579-3311	SAN DIEGO POLICE DEPT.	(619) 531-2000
ESCONDIDO POLICE DEPT.	(760) 839-4722	SAN DIEGO SHERIFF'S DEPT.	(858) 565-5200

Special Election Provisions

§4005(b)

The VCA establishes additional criteria for counties to follow when conducting a special election.

Every active registered voter residing in the district will receive a ballot in the mail.

Election Administration Plan

§4005(b)(1)(B)

The Registrar's office will have a final adopted Election Administration Plan and all required activities completed prior to the day of any special election as outlined throughout this plan.

Vote Center and Ballot Drop Box Locations – Special Elections

§4005(b)(2) through §4005(b)(4)

The VCA has established a formula for determining the number of vote center and ballot drop box locations for special elections.

Counties are instructed to provide one 11-day vote center for every 60,000 registered voters and on the day of the special election provide one vote center for every 30,000 registered voters.

Counties must also provide at least one ballot drop box locations within the jurisdiction where the special election is held or at least one ballot drop box location for every 15,000 registered voters.

Pages 12 through 22 of this plan provide more detail related to the criteria used for placement and location of vote centers and ballot drop boxes.

The county's first special election conducted under the VCA will be the April 5, 2022, California State Assembly District 80 Special Primary Election.

April 5, 2022, California State Assembly District 80 Special Primary Election

The Registrar's office has identified vote centers and ballot drop box locations within the district. The final list of selected vote centers and ballot drop box locations will be included in the Voter Information Pamphlet and is available on the Registrar's website, at [Election Information \(sdvote.com\)](https://sdvote.com).

Starting ten days before the day of the special election, approximately five vote centers will be open during regular business hours, from 8:00 a.m. to 5:00 p.m., and on Election

Day, from 7:00 a.m. to 8:00 p.m. An additional four vote centers will open on the day of the special election for a total of nine vote centers.

The Registrar's office will have approximately 17 ballot drop box locations throughout the district. All ballot drop box locations will be open during regular business hours. All ballot drop box locations will close Election Day, at 8:00 p.m.

List of Vote Centers and Ballot Drop Box Locations (April 5, 2022, Special Election)

The vote center and ballot drop box selection process is currently ongoing. The tables below will be updated as locations are confirmed for participation. This information is available on the website and in the Voter Information Pamphlet.

Proposed 11 Day Vote Centers

Open March 26 – April 4, 8:00 a.m. to 5:00 p.m.

Open Election Day, April 5, 7:00 a.m. to 8:00 p.m.

Facility	Address	City	Zip
SOUTHWESTERN COMM CLG-WEST STUDENT UNION	900 OTAY LAKES RD, LOT A	CHULA VISTA	91910
CAMACHO RECREATION CENTER - GYM	1810 E 22ND ST	NATIONAL CITY	91950
SOUTHCREST REC CTR-MEETING RM 1	4149 NEWTON AVE	SAN DIEGO	92113
MONTGOMERY HIGH SCHOOL-LIBRARY	3250 PALM AVE	SAN DIEGO	92154
COLONEL IRVING SALOMON COMM CTR-GAME RM	179 DIZA RD	SAN YSIDRO	92173

Proposed Election Day Vote Centers

Open Election Day, April 5, 7:00 a.m. to 8:00 p.m.

Facility	Address	City	Zip
CHULA VISTA MIDDLE SCHOOL-AUDITORIUM	415 5TH AVE	CHULA VISTA	91910
CASTLE PARK ELEM SCHOOL-MPR	25 EMERSON ST	CHULA VISTA	91911
WEBSTER SCHOOL-AUDITORIUM	4801 ELM ST	SAN DIEGO	92102
MID CITY COMMUNITY-GYMNASIUM	4302 LANDIS ST	SAN DIEGO	92105

Proposed Ballot Drop Box Locations

Available starting March 7, 2022 (Days/Hours will vary)

All Locations Open Election Day, April 5, 7:00 a.m. to 8:00 p.m.

Facility	Address	City	Zip
Bonita-Sunnyside Branch Library	4375 Bonita Rd	Bonita	91902
Corpus Christi Parish	450 Corral Canyon Rd	Bonita	91902
Chula Vista Public Library Civic Center Branch	365 F St	Chula Vista	91910
First United Methodist Church	1200 E H St	Chula Vista	91910
Norman Park Senior Center	270 F St	Chula Vista	91910
Office of Assessor/Recorder/County Clerk	590 3rd Ave	Chula Vista	91910
Otay Recreation Center	3554 Main St	Chula Vista	91911
South Chula Vista Library	389 Orange Ave	Chula Vista	91911
Chula Vista Public Library	2015 Birch Rd Ste 409	Chula Vista	91915
Imperial Beach Branch Library	810 Imperial Beach Blvd	Imperial Beach	91932
Lincoln Acres Branch Library	2725 Granger Ave	National City	91950
National City Public Library	1401 National City Blvd	National City	91950
Barrio Station	2175 Newton Ave	San Diego	92113
Logan Heights Library	567 S 28th St	San Diego	92113
Office of Assessor/Recorder/County Clerk	9225 Clairemont Mesa Blvd	San Diego	92123
Registrar of Voters	5600 Overland Ave	San Diego	92123
California DMV	6111 Business Center Ct	San Diego	92154
Otay Mesa-Nestor Library	3003 Coronado Ave	San Diego	92154
San Ysidro Library	4235 Beyer Blvd	San Ysidro	92173

If you would like to suggest a potential site, please complete the Site Selection Suggestion Form at [Voter's Choice Act \(sdvote.com\)](https://sdvote.com). This form will be available to the public until vote center and ballot drop box locations are finalized.