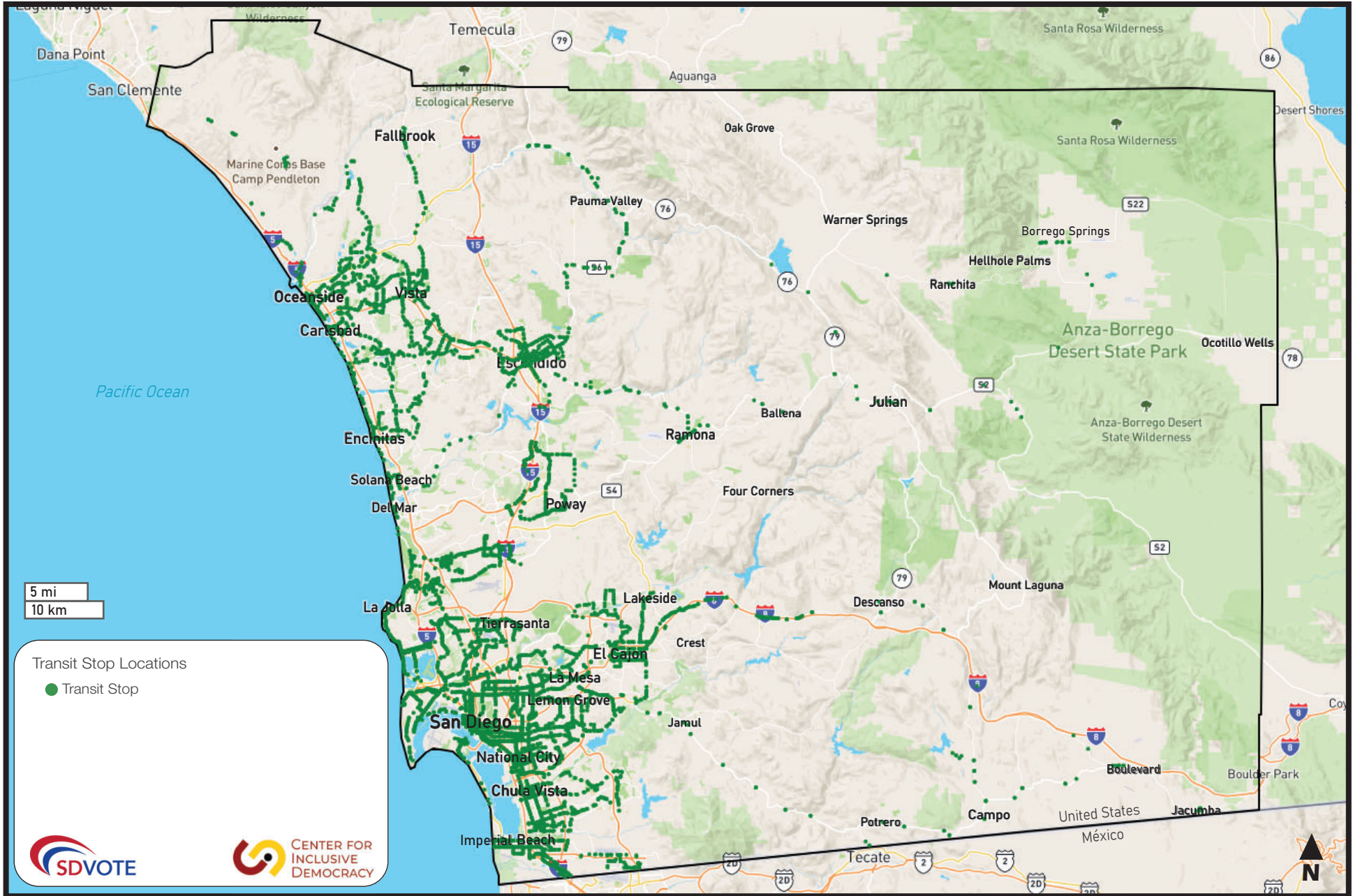


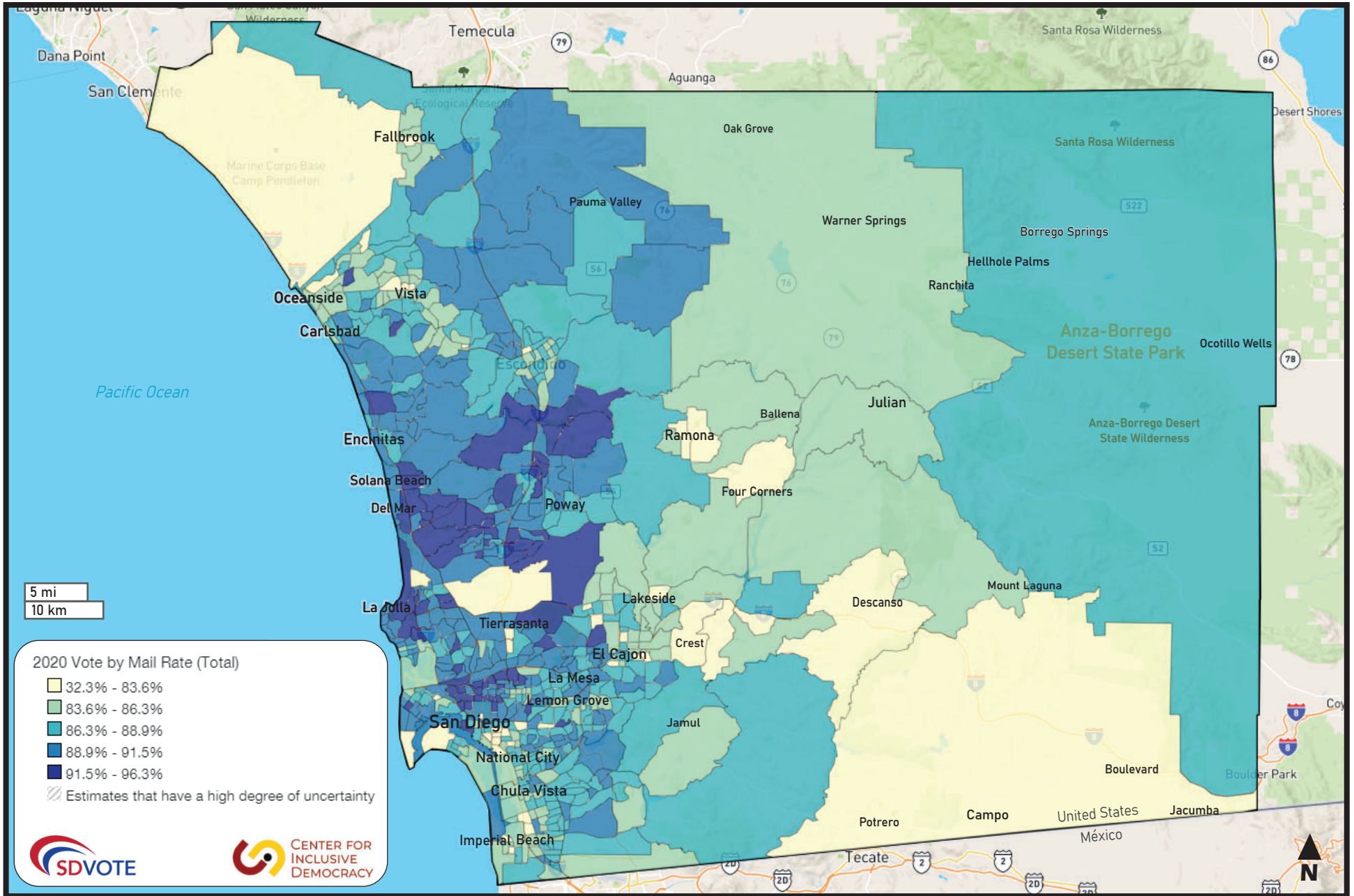
Vote Center and Ballot Dropoff location considerations:

- Proximity to public transit
- Proximity to communities with historically low vote by mail usage
- Proximity to population centers
- Proximity to language minority communities
- Proximity to voters with disabilities
- Proximity to communities with low rates of vehicle ownership
- Proximity to low-income communities
- Proximity to communities of eligible voters that are not registered
- Proximity to geographically isolated populations (i.e. Native Reservations)

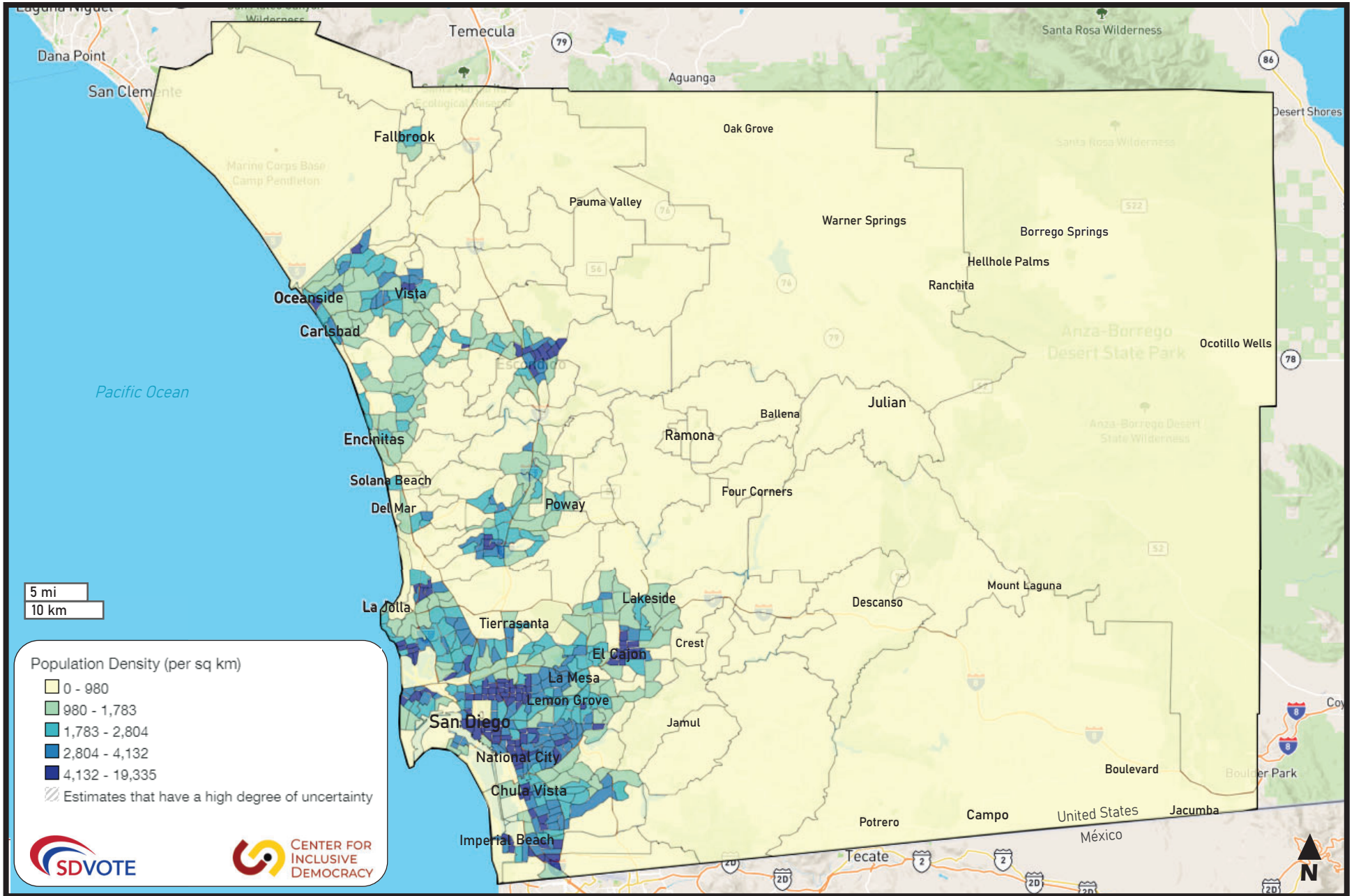
Public Transit



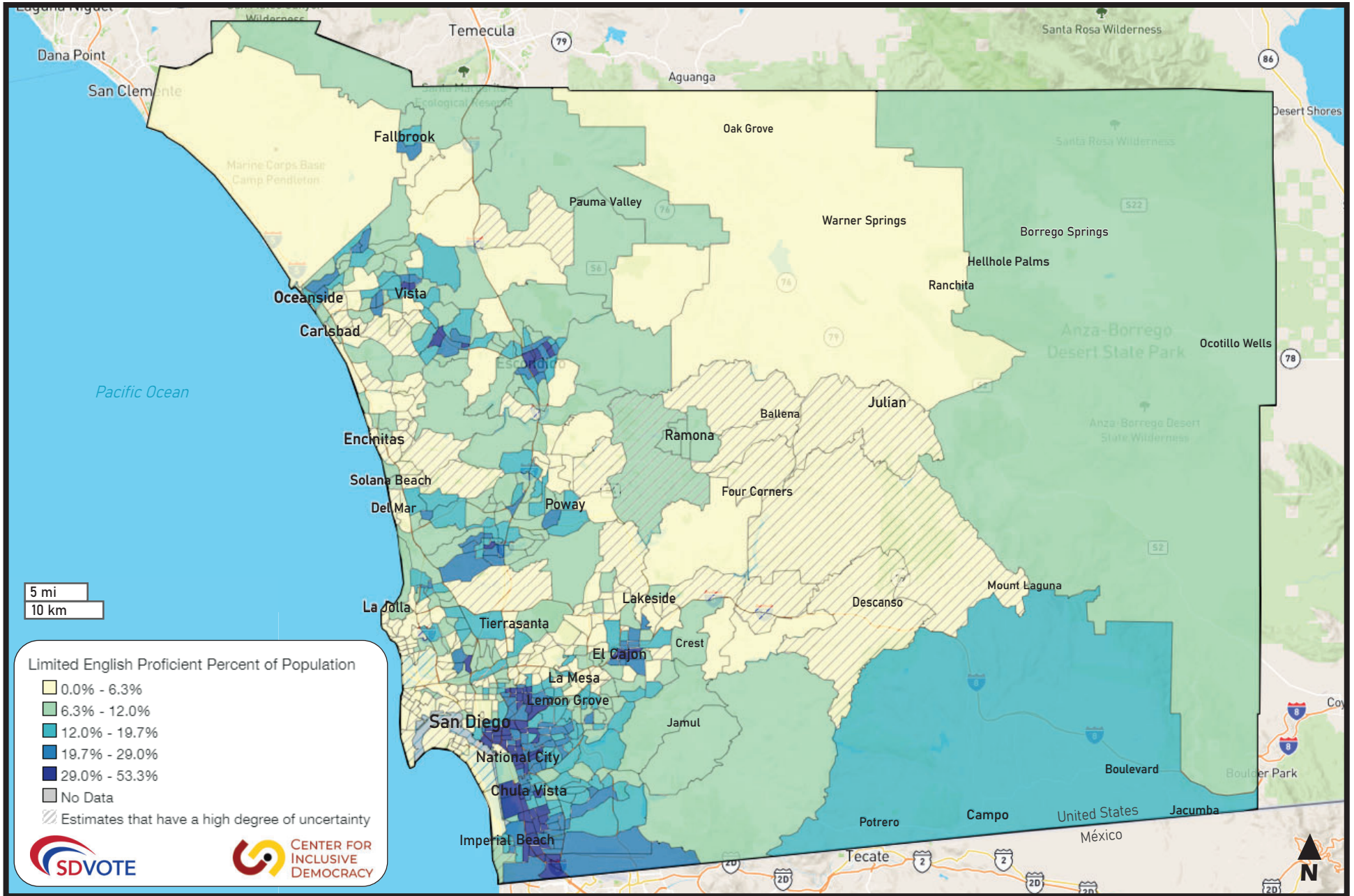
Communities with Historically Low Vote by Mail usage



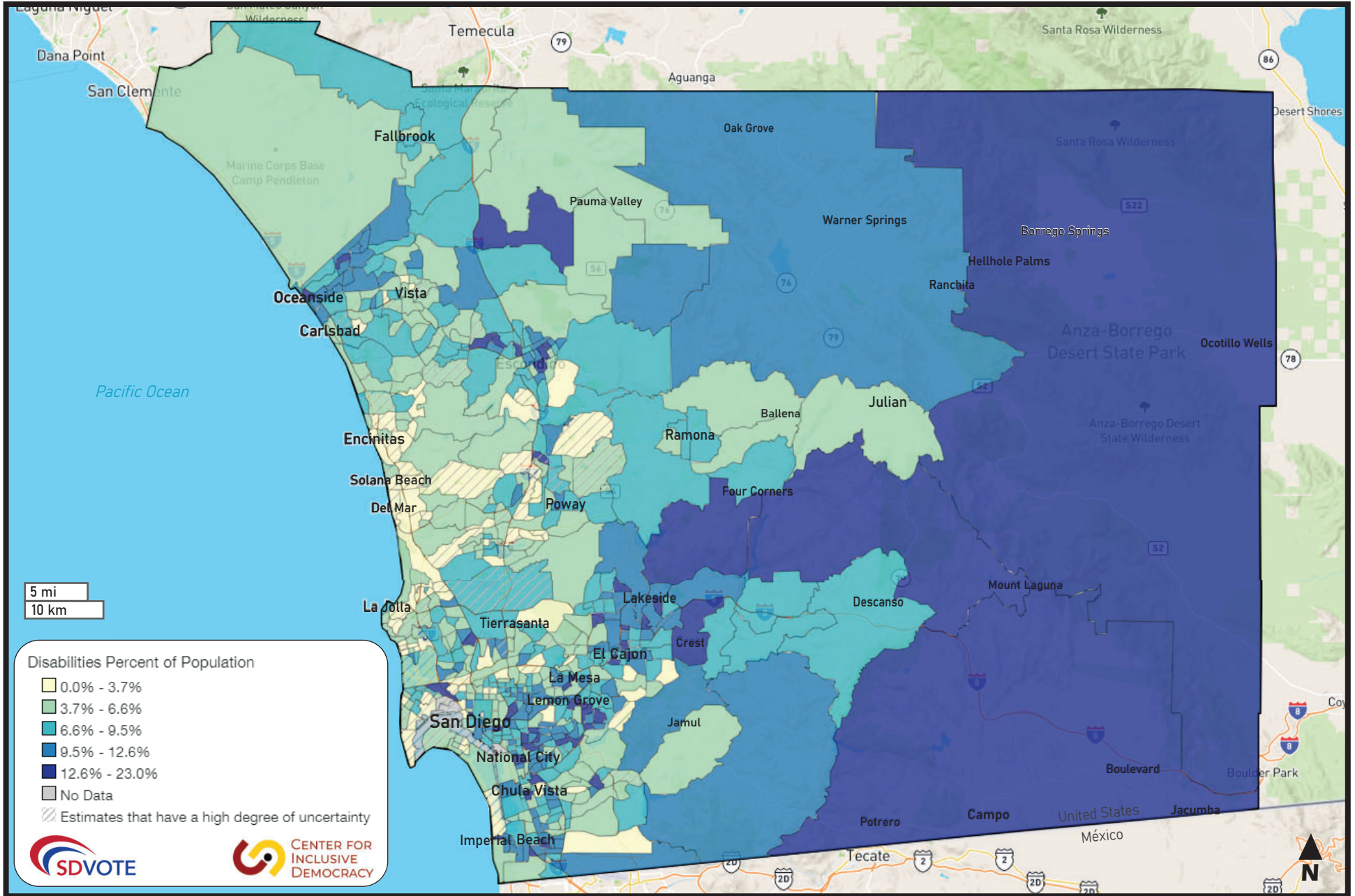
Population Centers



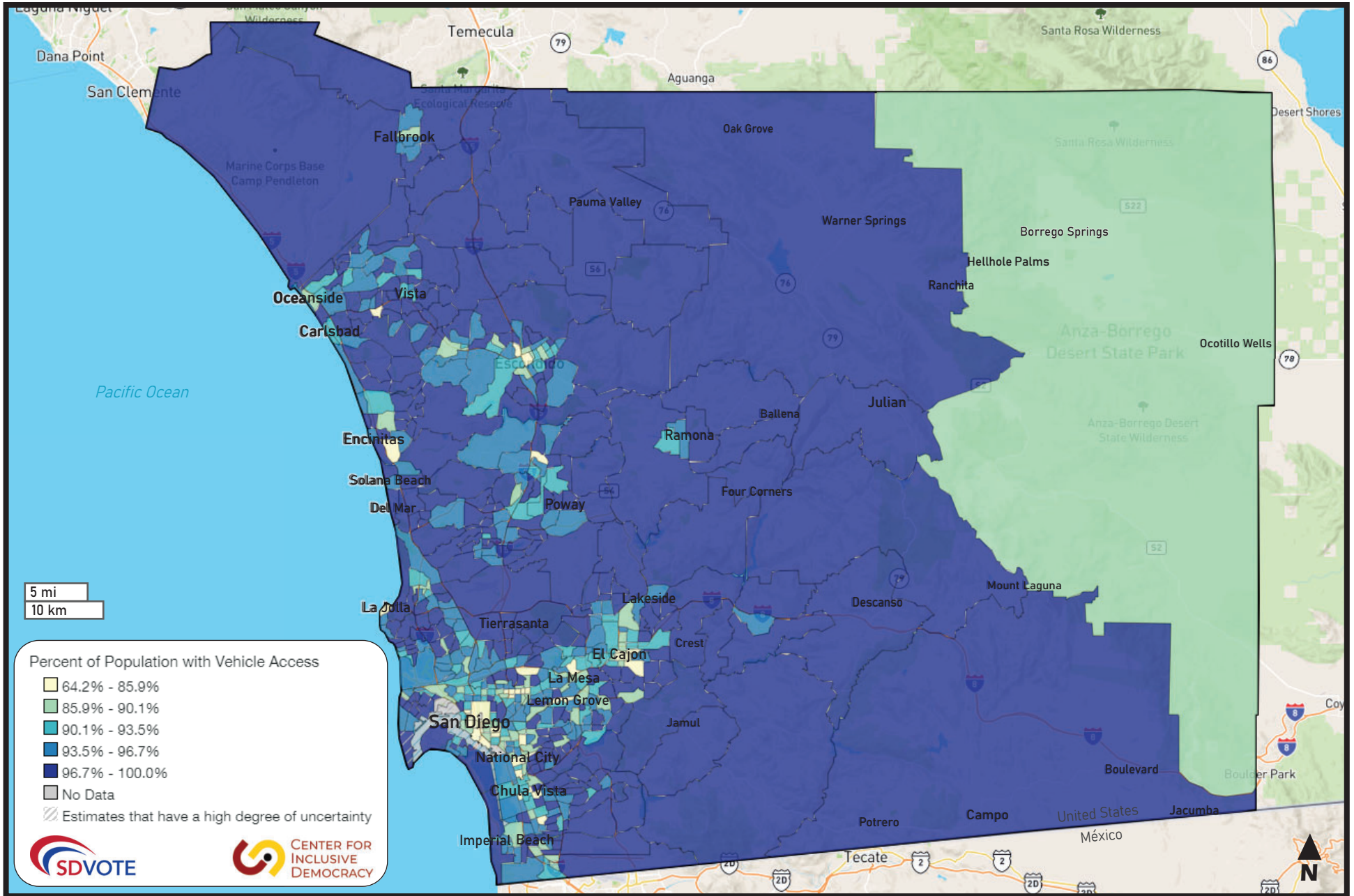
Language Minority Communities



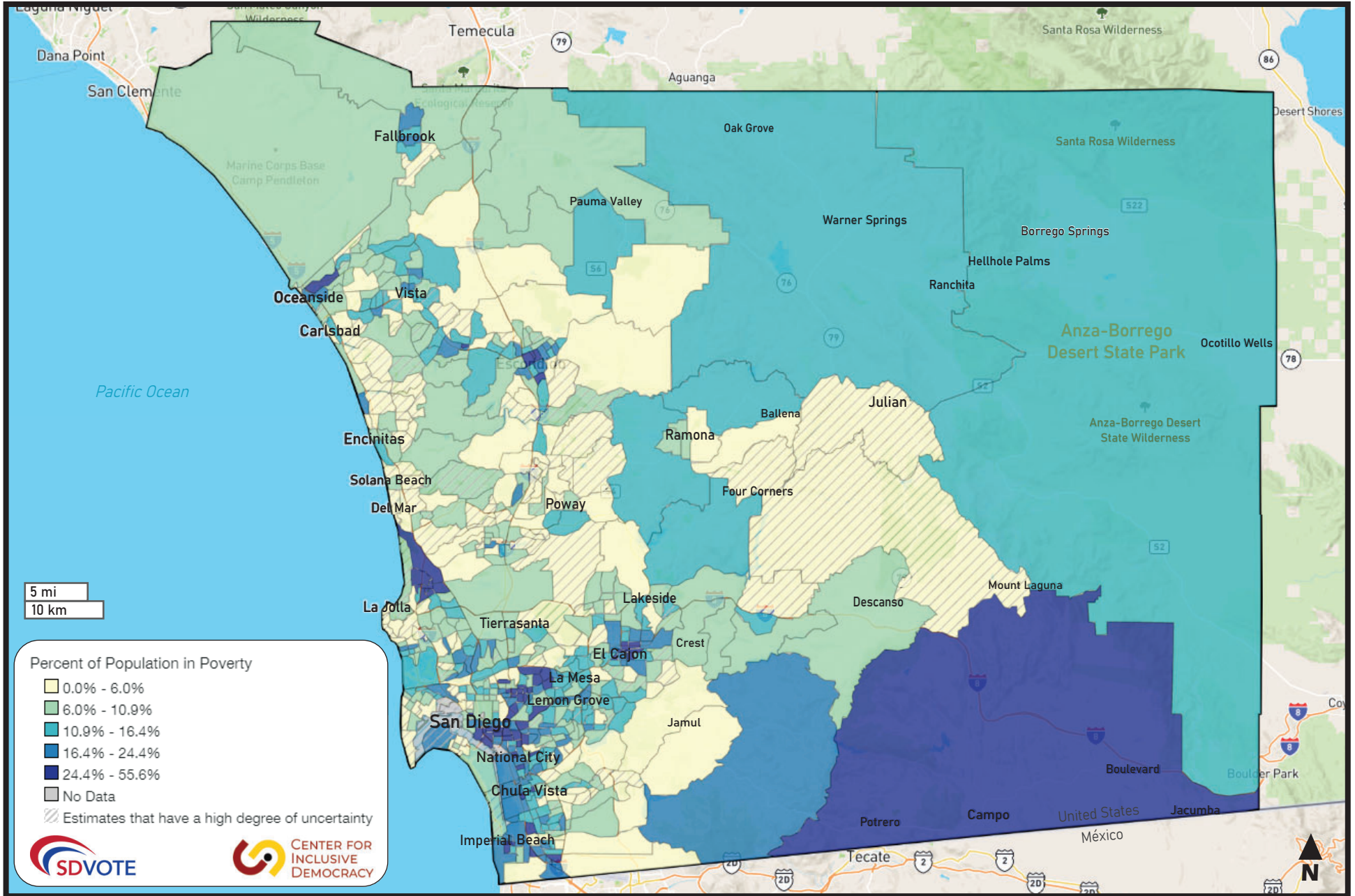
Voters with Disabilities



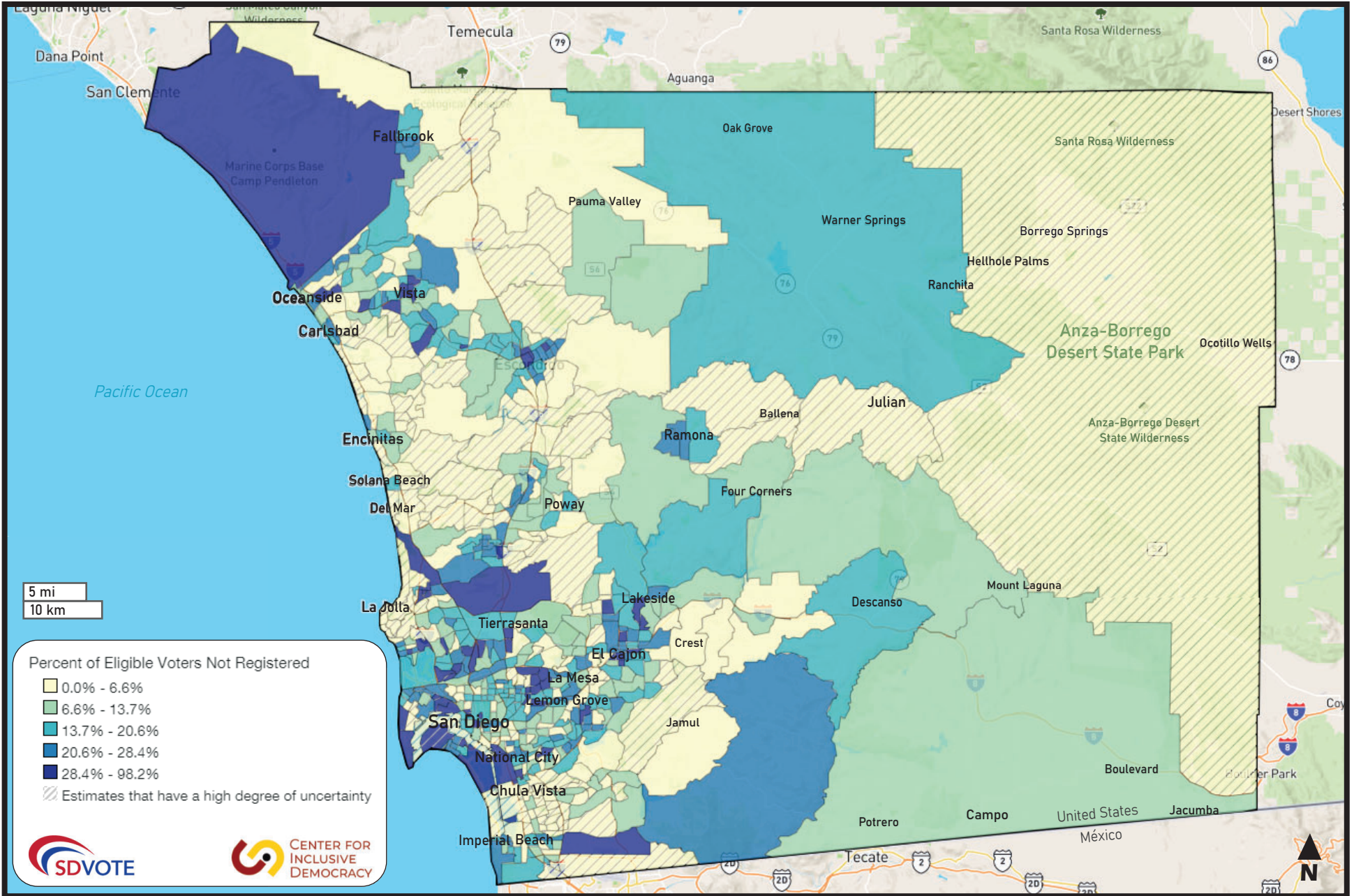
Communities with Low Rates of Vehicle Ownership



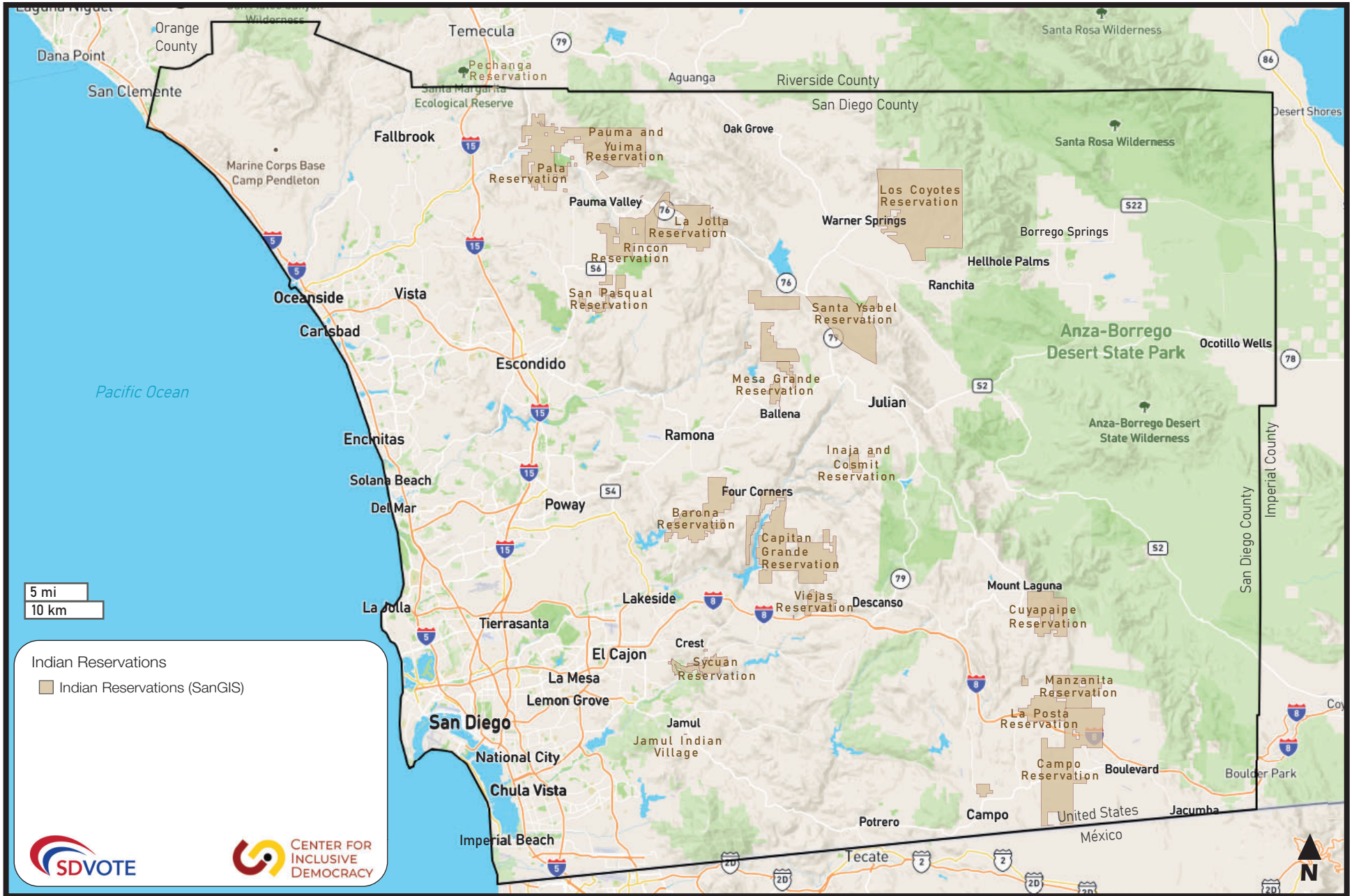
Low-Income Communities



Communities of Eligible Voters that are not Registered



Geographically Isolated Populations (i.e. Native Reservations)



All Potential Areas

